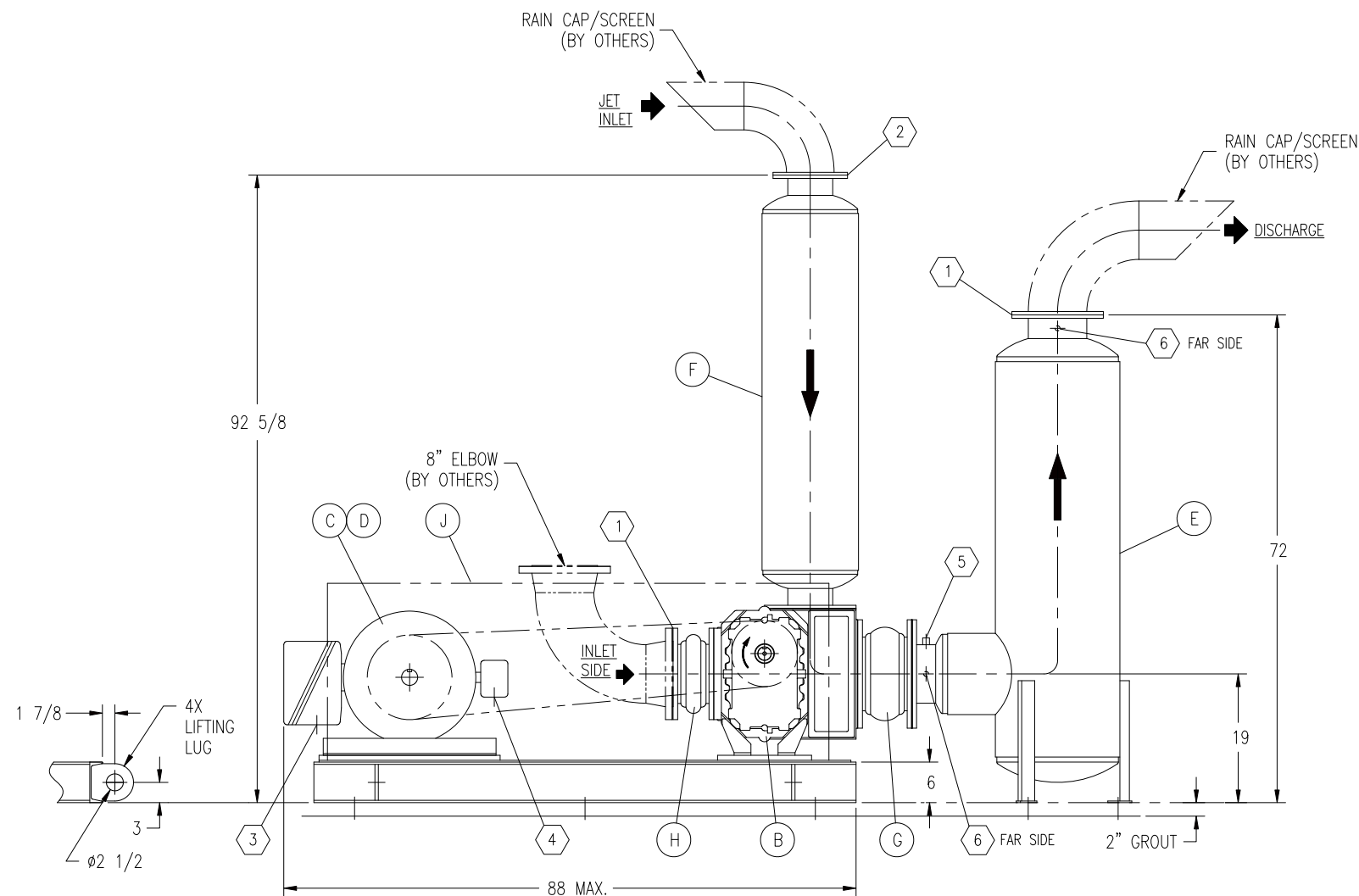


PLAN VIEW



ELEVATION VIEW

CUSTOMER CONNECTIONS

1	8" FLANGE CONNECTION 125# ANSI DRILLED 8X $\phi 7/8$ " HOLES ON $\phi 11.75$ B.C. STRADDLING C/L
2	6" FLANGE CONNECTION 125# ANSI DRILLED 8X $\phi 7/8$ " HOLES ON $\phi 9.50$ B.C. STRADDLING C/L
3	3" NPT FOR MOTOR CONDUIT CONNECTION
4	1" NPT FOR MOTOR AUX. CONDUIT CONNECTION
5	1/2" NPT (HALF-COUPLING) FOR TEMPERATURE SWITCH
6	1/4" NPT TEST COUPLING - QUANTITY (2)

OPERATING CONDITIONS:

GAS — — — — — AIR
 DESIGN INLET CAPACITY — — 1192/1025 CFM ($\pm 4\%$)
 BAROMETRIC PRESSURE — — 14.30 PSIA
 INLET PRESSURE — — — — 14.42"/17.5" HGG
 INLET TEMPERATURE — — — 116° F
 DISCHARGE PRESSURE — — — 14.69 PSIA
 DESIGN SPEED — — — — — 2030 RPM
 DESIGN BRAKEHORSEPOWER — 45.2/62.5 BHP ($\pm 4\%$)

V-BELT DRIVE DATA:

MOTOR SHEAVE — — — — — 3-5V-1180 SF, SF-2.375"
 BLOWER SHEAVE — — — — — 3-5V-1030 SF, SF-2.000"
 V-BELTS — — — — — (3) 5VX1400
 C-C DISTANCE — — — — — 52.6"

ITEM	QTY	DESCRIPTION
A	1	SKID WELDMENT, 80 X 44-1/2 X 6
B	1	VACUUM PUMP, ROOTS, 616 RAM-DVJ
C	1	MOTOR, AC, 75 HP, 365T FRAME, 1800 RPM, 3/60/460, TEFC
D	1	BASE, MOTOR, STEEL, 365T FRAME
E	1	SILENCER, SDY-8, W/10" FLG, Y=16 (SHIP LOOSE)
F	1	SILENCER, SD-6, W/ 8" FLG (SHIP LOOSE)
G	1	JOINT, EXPANSION, 10" PIPE, 8" LG, EPDM (SHIP LOOSE)
H	1	JOINT, EXPANSION, 8" PIPE, 6" LG, EPDM (SHIP LOOSE)
J	1	BELT GUARD ASSY
-	1	SWITCH, DIFFERENTIAL TEMPERATURE (NOT SHOWN) (SHIP LOOSE)
K	2	OIL PAN

DRIVE MOTOR INFORMATION:

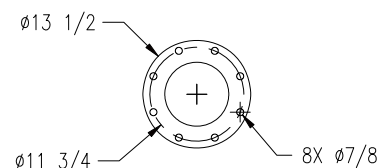
FURNISHED BY — — — — — CUSTOMER
 MOUNTED BY — — — — — REP
 MANUFACTURER — — — — — SIEMENS
 FRAME/TYPE — — — — — 365T/TEFC
 HORSEPOWER — — — — — 75
 RPM — — — — — 1800/1785 (ACTUAL)
 VOLTAGE — — — — — 3/60/460

APPROX SHIPPING WT IN LBS:

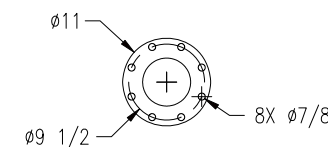
BLOWER — — — — — 975
 MOTOR — — — — — 1000
 BASEPLATE & GUARD — — — — 610
 V-BELT DRIVE — — — — — 90
 SILENCER, JET — — — — — 110
 SILENCER, DISCHARGE — — — — 220
 EXPANSION JOINTS — — — — — 110
 TOTAL — — — — — 3,115

NOTES:

1. INLET & DISCHARGE FLANGES TO MATE FLUSH & SQUARE WITH FLAT FACE FLANGE ONLY. USE FULL FACE GASKET.
2. THE BASEPLATE WHICH MOUNTS THE BLOWER, DRIVE MOTOR & ALL ASSOCIATED APPARATUS SHALL BE LIFTED ONLY BY USING FOUR LIFTING HOLES.
3. BY VIRTUE OF THE OPEN FRAME DESIGN, IT IS RECOMMENDED THAT THE BASEPLATE BE FILLED WITH CONCRETE TO A LEVEL EQUAL TO THE TOP OF THE MAIN CHANNELS.
4. SEE INSTRUCTION MANUAL ISRB-2000.
5. DIMENSIONS ARE IN INCHES. UNLESS OTHERWISE NOTED, DIMENSIONS ARE $\pm 1/4$ ".



INLET & DISCHARGE FLANGE
8" ANSI FLANGE, 1" THK (INLET) & 1/2" THK (DISCHARGE)



JET INLET FLANGE
6" ANSI FLANGE, 1/2" THK

REV	DESCRIPTION	DATE	BY
		ROTATING ENGINEERED PRODUCTS, INC. 2405 MURPHY BOULEVARD GAINESVILLE, GA. 30504 TOLL FREE: (800) 536-9933, (770) 538-0020, FAX: (770) 538-0022	
SCALE: N.T.S.		TITLE: BLOWER VACUUM PACKAGE	
DRAWN BY: AM		DATE: 11-26-07	
CHECKED BY:		DATE:	
APPD. BY:		DATE:	
CUSTOMER		DRAWING NO. BV085 B F003	SHEET NO. REV. 1 OF 1