

INLET & DISCHARGE FLANGES TO MATE FLUSH & SQUARE WITH FLAT FACE FLANGE ONLY. USE FULL FACE GASKETS.

V-BELT DRIVEN UNITS: MOTOR TO BE LOCATED ON INLET SIDE OF BLOWER.

AD - MAXIMUM SHEAVE WIDTH (SEE OVERHUNG LOAD LIMIT K-24102)

AE - MINIMUM SHEAVE DIAMETER (SEE OVERHUNG LOAD LIMIT K-24102)

ALL DIMENSIONS IN MM, IMPERIAL DIMENSIONAL #92519021

ISO FLANGE DIMENSIONS						
	FA	FB	FC	FD	FE	FG
300 FLG	305	400	483	12	20X2.5	31.8
350 FLG	356	460	533	12	20X2.5	38.1

FA - FLANGE OPENING
 FB - FLANGE BOLT CIRCLE
 FC - FLANGE O.D.
 FD - No. TAPPED HOLES
 FE - SIZE OF TAPPED HOLES
 FG - DEPTH OF TAP

DRIVE LOCATION		
DISCH. LOCATION	DRIVE LOCATION	
	LH	RH
TOP	CW	CCW
BOTTOM	CCW	CW

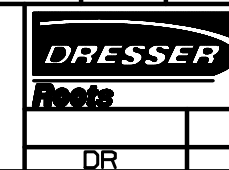
UNIT IS BUILT TO CUSTOMERS SPECIFIED ORIENTATION

MODEL	A	A'	B	C	D	D'	E	E'	F	G	H	J	K	M	N	O	P	R	U	V	KEYWAY	INLET	DISCH	AB	AD	AE	AF	INLET/ DISCH	APPROX
																			MM	MM	MM	AA	AA'					FLANGE	WEIGHT
																					MM						SIZE		
800	552	755	827	1193	492	289	225	327	413	13	25	114	83	475	125	742	912	390	70.00	102.0	20.0X8.0	456	456	352	183	335	704	300	1045 KG
1000	"	"	979	1346	"	"	"	"	490	"	"	"	"	551	"	"	924	"	"	"	20.0X8.0	462	462	"	"	"	"	350	1304 KG

CERTIFIED CORRECT FOR
 CUSTOMER ORDER No. _____
 ROOTS ORDER No. _____
 DATE _____

				V-BELT DRIVE DATA			

RAM X™
TRILOBE BLOWERS
 METRIC
 MODELS 800 & 1000



Dresser ROOTS, Dresser, Inc.
 Connersville, IN USA
 92520021
 DR CHKD APP
 92520021 XXAD