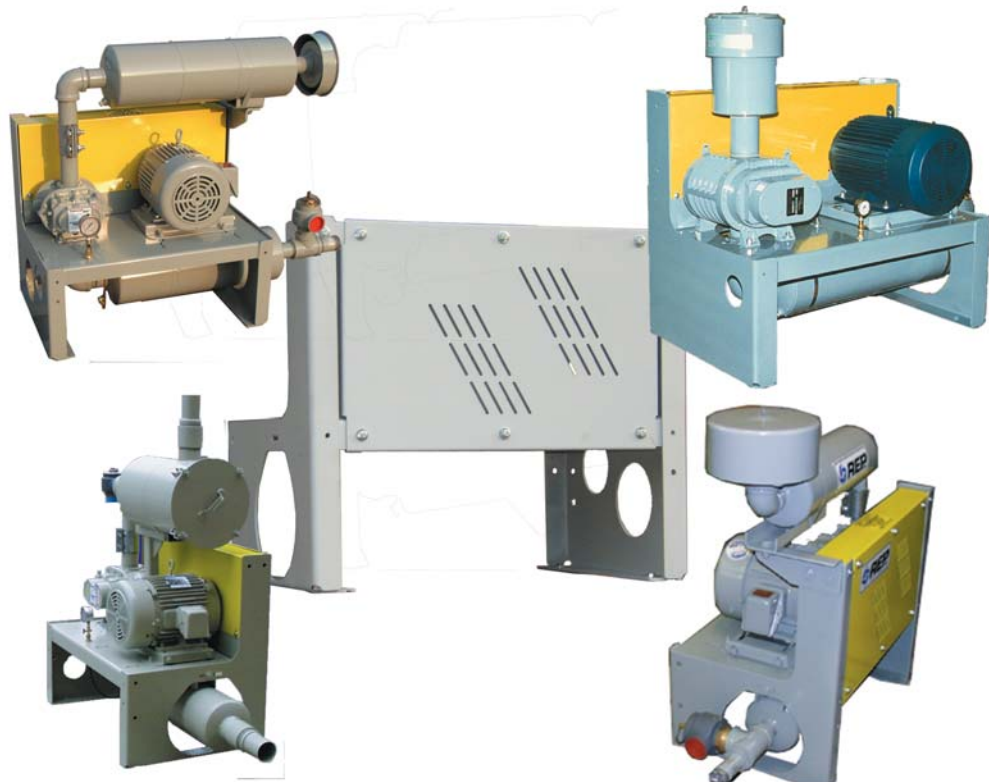


**VERSABASE**  
BLOWER PACKAGE KIT



**Packaging Made Simple**



## What is the VersaBase?

The VersaBase is a "table-top" mounting platform for the Roots U-RAI®, Sutorbilt® Legend™ and MD Competitor Plus™ rotary positive displacement blowers. VersaBase configurations are also available for the Roots-Flo™ and Duroflow® blowers.

The VersaBase is a pre-engineered system that enables the rapid assembly of positive displacement blower and vacuum pump packages. The VersaBase Blower Package Kit consists of a fabricated steel base, lower guard, upper guard, guard cover and various brackets and fastener kits.



### Advantages of the VersaBase include:

- Lower engineering cost including design and documentation drawings
- Lower procurement costs
- Lower assembly costs
- Reduced capital or shop investment cost
- Lower re-work costs
- Faster delivery times

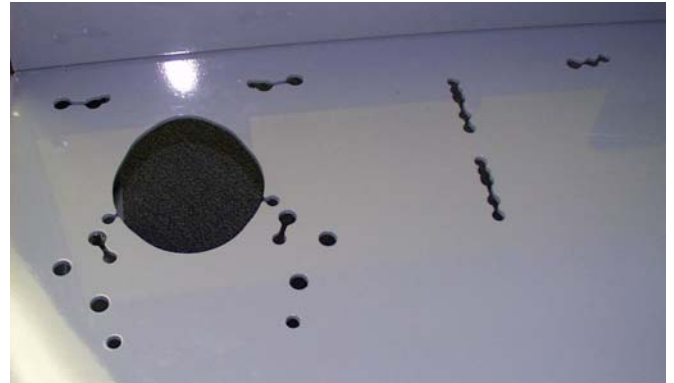
Three basic sizes are available to help meet the majority of your packaging needs for blower and vacuum pump packages utilizing up to 5" silencers. A fourth basic size is available for silencers up to 10" connection size.



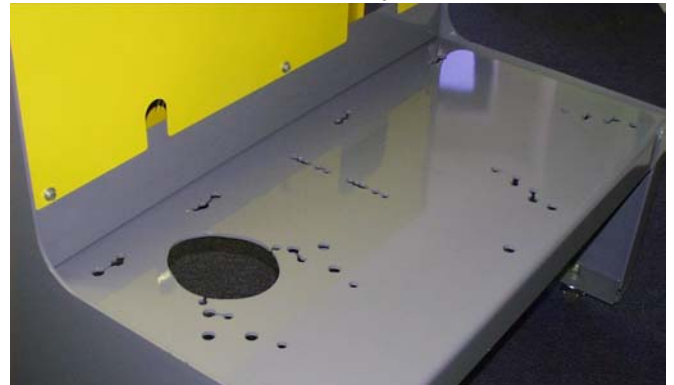
## VersaBase Fabricated Steel Base

The base is made up of several components including the deck, blower side leg, motor side leg and reinforcing braces on certain models. Each component has been optimized to give you maximum versatility regarding your configuration and options you may elect to mount.

The VersaBase provides pre-cut mounting holes for various blowers. The pattern consists of plasma cut



holes for the blower mounting feet as well as the penetration for the pipe connections. Each base has multiple mounting holes to allow a variety of units to be mounted to the base. Mounting holes are also provided for a variety of motor slide bases.

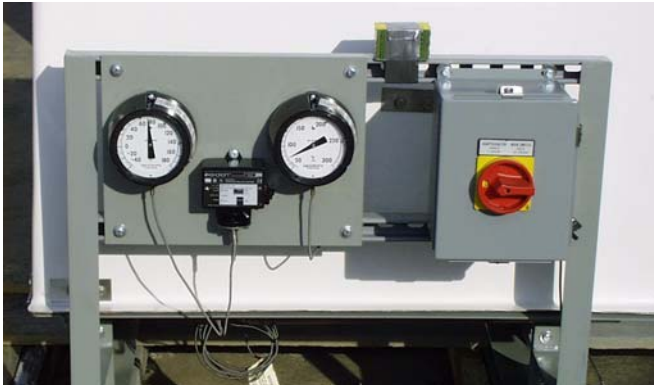


The blower side leg incorporates a hole for mounting a Dwyer Magnehelic gauge which is often used for filter losses or differential pressure across an inline filter.

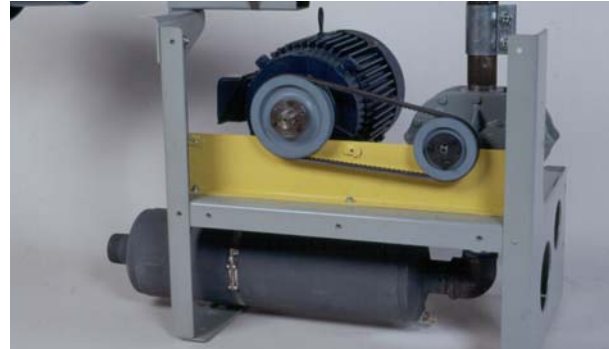
Mounting holes are provided for accessory brackets.



Accessory brackets can be used to mount starters, gauge assemblies or any other assembly that might be required.



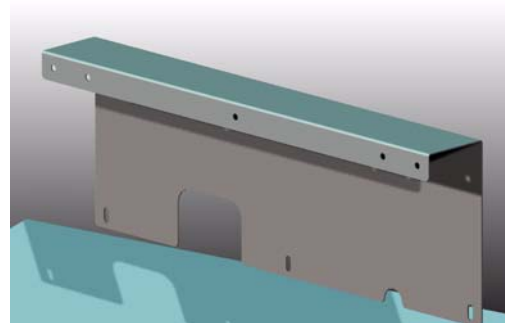
on the underside of the deck are eliminated by the use of threaded weld nuts. Several lower guards are available for each VersaBase to optimize the safety of various blower and motor combinations.



Mounting holes for enclosure support brackets are provided in the event an FRP cover is provided for the blower and motor assembly.



The upper guard mounts to the lower guard as well as the vertical extensions on each side leg. Again,



several upper guards are available for each VersaBase to optimize the safety of various blower and motor combinations.

The motor side leg is provided with an indexed slot to mount discharge silencer supporting brackets. The indexed slots take the guess work out of silencer location and ease assembly. Complimentary mounting holes are also provided for the accessory and enclosure support brackets.



The guard cover provides visual access for the drive. Access is simple, just remove six bolts, and complies with OSHA guide lines. Space has been provided for your decal to customize the package and let those who see it, recognize where they can purchase one for themselves.



### Drive Guard Components

The drive guard is made up of three pieces: lower guard, upper guard and guard cover. Each VersaBase has several combinations of upper and lower guards to best suit your needs.

The lower guard mounts to the deck of the base. Headaches of getting a washer, lockwasher and nut

The guard cover can be customized to incorporate your company logo or symbol. If you can create the



design in AutoCad, we can cut it into the guard cover.



**VersaBase Models**

Model	Blowers
VB23	Roots 22, 24, 32 and 33 URAI Sutorbilt 2M, 2L, 3H and 3M Legend MD Pneumatics 2002, 2004, 3002 and 3003 Competitor Plus Maximum Horsepower: 10
VB34	Roots 33, 36, 42, 45 and 47 URAI Sutorbilt 3M, 3L, 4H, 4M and 4L Legend MD Pneumatics 3003, 3006, 4002, 4005 and 4007 Competitor Plus Maximum Horsepower: 20
VB567	Roots 53, 56, 59, 65, 68 and 76 URAI Sutorbilt 5H, 5M, 5L, 6H, 6M and 7H Legend MD Pneumatics 5003, 5006, 5009, 6005, 6008 and 7006 Competitor Plus Maximum Horsepower: 50
VR6B1	Roots 412 RAM, 615, AND 711 URAI Sutorbilt 6L, 7M and 7L Legend MD Pneumatics 6015, AND 7011 Competitor Plus Maximum Horsepower: 100
VR6C1	Roots 718 URAI, 418, and 616 RAM or RAM-J Sutorbilt 7LP, 713 & 812-4500 Series Maximum Horsepower: 150
VR4RF	Roots 4504, 4506, and 4509 Roots-Flo Duroflow 4504, 4506, and 4509 Series 45 Maximum Horsepower: 50

*Additional special configurations are available - please consult the factory.*

**Materials of Construction**

Each VersaBase is fabricated from hot rolled plate steel. Components are formed to enhance strength. The components are then welded together to form a single unitized base.

Model	Materials of Construction
VB23	Deck - 3/16" Plate Legs - 3/16" Plate Lower Guard - 12 Ga HRS Upper Guard - 14 Ga HRS Guard Cover - 14 Ga HRS
VB34	Deck - 1/4" Plate Legs - 3/16" Plate Lower Guard - 12 Ga HRS Upper Guard - 14 Ga HRS Guard Cover - 14 Ga HRS
VB567	Deck - 1/4" Plate Legs - 1/4" Plate Lower Guard - 12 Ga HRS Upper Guard - 14 Ga HRS Guard Cover - 14 Ga HRS
VB678	Deck Components - 1/4" Plate Leg Components - 1/4" Plate Lower Guard - 10 Ga HRS Upper Guard - 14 Ga HRS Guard Cover - 14 Ga HRS Guard Uprights - 10 Ga HRS

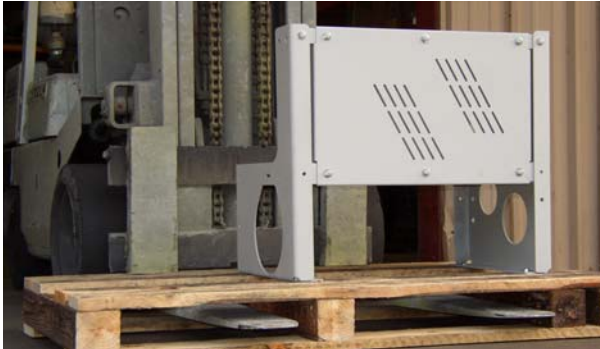
**Standard Package Arrangement**

The VersaBase has established a standard blower arrangement as a left side shaft and bottom discharge configuration. Standard center distances have been established to minimize your engineering effort to select a drive. Standard drawings are available for both pressure and vacuum systems. Drawings provide dimensional data in a tabulated format for a variety of configurations including: silencer connection equal to blower connection size, silencer connection one size larger then blower connection size. The drawings can be customized for your title block making the finished product, uniquely yours.

**Standard Shipping Configuration**

- VersaBase is lagged to a wooden pallet suitable for use once the package is built
- All components are primed with Tnemec Series 27 light gray polyamide epoxy primer that is compatible with most finish systems

- Guard components are mounted on the VersaBase with appropriate fastener kits
- Specified bracketing is shipped in a box bound to the base



## Standard Leadtimes

REP endeavours to keep all VersaBase components in stock and ready to ship either the same day as order placement or the next business day. These short leadtimes can be achieved because we have made the investment in CNC fabrication equipment that enable us to make parts at a moments notice.



## Warranty

REP has a no nonsense warranty. If you are unhappy with our VersaBase product, you may return it, freight pre-paid for a full refund. We guarantee that are components will be free from defects for 12 months from date of purchase.

## Accessories

We offer a complete line of accessories for the VersaBase product line including:

- TOE Nipples
- Compression Couplings
- High Temperature Flexible Connectors
- Expansion Joints
- Motor Slide Bases
- Motors

- Sheaves, Bushings and v-belts
- Elbows
- Tees
- Decals
- Fiberglass “Clam-shell” enclosures with hardware
- Galvanized Acoustical Enclosures



- Sub-bases
- Brackets and mounting hardware
- Instruments and Switches
  - Pressure Gauges with bulkhead fittings, snubbers and gauge cocks
  - Temperature Gauges
  - Temperature Switches
  - Thermowells
  - Pressure Switches
- Relief Valves Spring & Weighted Type
- Check Valves

## Services

REP has a wide variety of services available including:

- Custom AutoCad Drawings for special configurations
- Custom Design
- Custom Fabrication
  - Baseplates
  - Belt Guards
  - Weldments
  - Pipe Flanges
- SSPC-6 Preparation
- Special Coatings
- Special Materials of Constructions
  - Stainless Steel
  - Aluminum

## Proven Performance

The VersaBase has been in use since 1996 with hundreds in use today. Time to assemble a package is minimized. ***The VersaBase Blower Package Kit will save you money.***



---

2405 Murphy Blvd.  
Gainesville, GA 30504  
Telephone: 800-536-9933  
Facsimile: 770-538-0022  
email: [versabase@pdblowners.com](mailto:versabase@pdblowners.com)