

Pressure Oiler Oil Flow Sight Feed Indicator



Model 902A

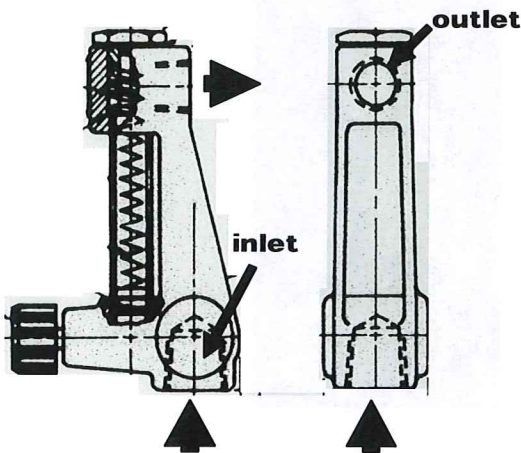
The Model 902A Pressure Feed Oiler is a combination of a metering valve and flow indicator. It is used for the distribution and supply of oil under pressure to lube points of use, such as bearings and gears. It is particularly useful where several lubrication points are served from the same piping manifold. The 902A oilers can be clustered in easily accessible locations. Oil can then be piped up to remote or less accessible lube points.

BENEFITS

- o **Simple:** Simplicity of design is one of the leading benefits. This easy to comprehend oiler provides simplistic oil flow indication. Its long term popularity is attributed to its simple design and operation.
- o **Heavy Duty Construction:** The durable body provides a rugged and robust device that withstands industrial environments. Even in the roughest operation, it remains reliable.
- o **Easy Oil Flow Adjustment:** Provides easy adjustment during lube system start-up and normal operation.

APPLICATIONS

- Paper Machine Lube Systems
- Gearbox Lube Systems
- Roller Mill Lube Systems
- and Compressor Lube Systems



902A-4 (Part Number 27N86)

SPECIFICATIONS & DETAILS

Models Available and Flow Rate Range	Model 902A-2 (Part Number 34N56) Flow Rate Range: .5 ppm to 2 ppm (.24 lpm - .95 lpm) Model 902A-4 (Part Number 27N86) Flow Rate Range: 1 ppm to 4 ppm (.48 lpm - 1.9 lpm) Model 902A-8 (Part Number 27N87) Flow Rate Range: 2 ppm to 8 ppm (.95 lpm - 3.8 lpm) Model 902A-16 (Part Number 27N88) Flow Rate Range: 4 ppm to 16 ppm (1.9 lpm - 7.6 lpm) Model 902A-32 (Part Number 27N89) Flow Rate Range: 8 ppm - 32 ppm (3.8 lpm - 15.2 lpm) ppm = pints per minute (lpm = liters per minute) scale indicator is labeled in pints per minute
Connections	Inlet = 0.75 inch (NPT), Outlet = 0.5 inch (NPT)
Materials of Construction	Body: Cast Iron Piston: Aluminum with Teflon O-Ring Spring: Carbon Steel Spring Wire Sight Tube: Borosilicate Gage Glass Stem and Glass O-Ring Seals: Viton Inlet Protection Screen: 304SS (16 mesh)
Size and Weight	(with adjusting screw full closed) L = 4.0 inches (102 mm) (with adjusting screw full open) L = 4.5 inches (115 mm) W = 2.0 inches (51 mm) H = 6.0 inches (153 mm) Weight = 1 lbs (.5 kgs)
Operating Pressure	125 psig at 125F (8.8 kg/cm ² at 52C) - maximum
Pressure Drop at Full Scale	12 psid (0.8 kg/cm ²) at 100F (38C) with ISO 460 oil
Operating Temperature Range	32°F - 200°F (0°C - 93°C)
Oil Viscosity Range	ISO 32 - ISO 460
Accuracy and Repeatability	Accuracy is within 5% and is repeatable within an oil temperature range of +/- 30F from normal operating temperature.
Parts Kits	Includes: tube glass, adjustment screw assembly, retainer nut, screen, retainer washer, set screw, retainer, piston spring, and glass o-ring (2) Model 902A-2 Parts Kit = Part Number 34N56-PK Model 902A-4 Parts Kit = Part Number 27N86-PK Model 902A-8 Parts Kit = Part Number 27N87-PK Model 902A-16 Parts Kit = Part Number 27N88-PK Model 902A-32 Parts Kit = Part Number 27N89-PK

1571 Lukken Industrial Drive West • LaGrange, GA 30240
International 00+1 706.884.3041 • **Toll Free** 1.800.241.2342 (U.S. Only)
Fax 706.884.3835 • www.kaydonfiltration.com • filtration@kaydon.com

©2010 Kaydon Filtration. All rights reserved. PRINTED IN THE USA.

Specifications Subject To Change Without Notice

DS091510902A