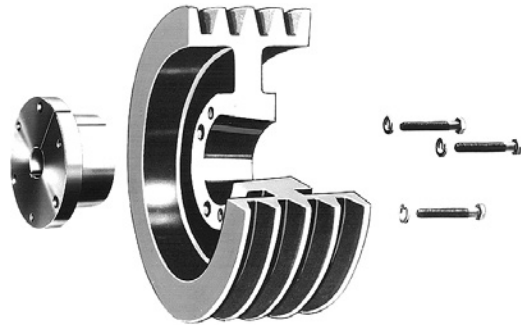


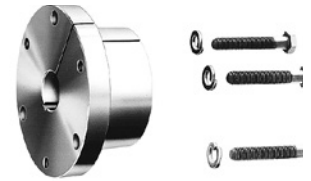


# FEATURES/BENEFITS

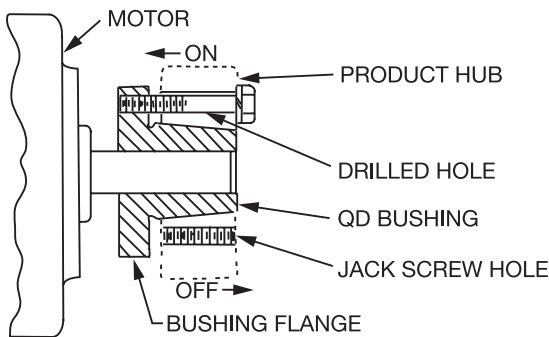
## QD Bushings



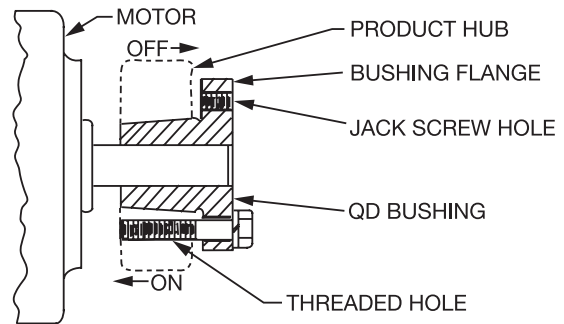
- 4 Degree Taper
- Easy on/Easy off
- Manufactured precisely to industry standards
- Conventional or Reverse Mounting, Including sizes M thru W - DODGE exclusive!
- QD is a registered trademark of Emerson Electric.



### CONVENTIONAL



### REVERSE



## Conventional Mounting

### Easy On

- Place bushing in product
- Align clearance holes in product with threaded holes in bushing
- Install screws and lockwashers thru clearance holes, finger tight
- Slide assembly onto shaft, flange first
- Locate assembly on shaft for proper drive alignment
- Tighten cap screws alternately and evenly to specified torque

### Easy Off

- Remove cap screws and install in product threaded holes
- Alternately and evenly tighten screws until bushing grip is released
- Flanged Design

## Reverse Mounting

### Easy On

- Place bushing in product
- Align clearance holes in product with threaded holes in bushing
- Install screws and lockwashers thru clearance holes, finger tight
- Slide assembly onto shaft, flange outward
- Locate assembly on shaft for proper drive alignment
- Tighten cap screws alternately and evenly to specified torque

### Easy Off

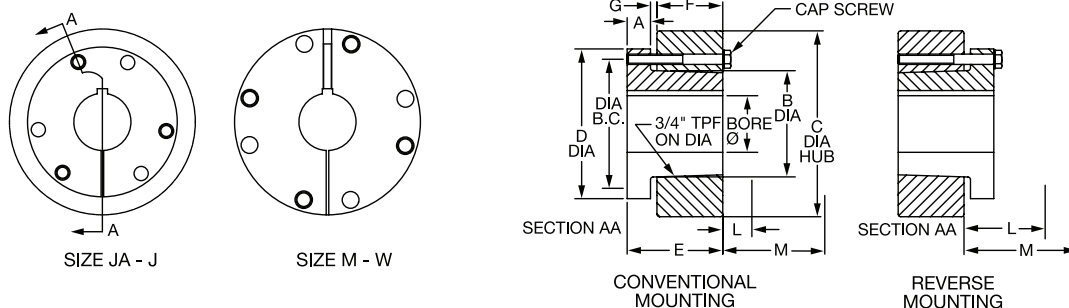
- Remove cap screws and reinstall in flange threaded holes
- Alternately and evenly tighten screws until bushing grip is released

**IMPORTANT! Do not use lubricants or anti-seize compounds on tapered bore or bushing surfaces. Complete installation instructions are available at [www.dodge-pt.com](http://www.dodge-pt.com).**



# SPECIFICATION

## QD Bushings - Dimensions



## QD Bushing Ratings And Dimensions

Bush. Symb.	Ratings (Lb-in) Bush. Torque Cap.*	Bore Range				Dimensions							
		Min.	Max. Bore for:			A	B Dia.	C Hub Dia.		D Dia.	E	F	G
			Full KW	Shallow KW	No KW			CI 30 Iron	Steel				
QT / (L)	1000	3/8	1-1/4	1-1/2	1-9/16	0.35	1.63	3.00	2.375	2.50	1.35	0.94	0.12
JA	1000	1/2	1	1-3/16	1-1/4	0.31	1.38	3.93	2.25	2.00	1.00	0.56	0.12
SH	3500	1/2	1-3/8	1-5/8	1-11/16	0.38	1.88	4.75	3.00	2.63	1.25	0.81	0.12
SDS	5000	1/2	1-5/8	1-15/16	2	0.43	2.18	4.75	3.50	3.18	1.31	0.75	0.12
SD	5000	1/2	1-5/8	1-15/16	2	0.43	2.18	3.81	3.50	3.18	1.81	1.25	0.12
SK	7000	1/2	2-1/8	2-1/2	2-5/8	0.50	2.81	4.75	4.50	3.88	1.88	1.25	0.22
SF	11000	1/2	2-5/16	2-15/16	...	0.50	3.13	6.38	5.50	4.63	2.00	1.25	0.22
E	20000	7/8	2-7/8	3-1/2	...	0.75	3.83	7.50	6.50	6.00	2.63	1.63	0.25
F	30000	1	3-1/4	3-15/16	4	0.81	4.43	7.75	7.25	6.63	3.63	2.50	0.34
J	45000	1-1/2	3-3/4	4-1/2	...	1.00	5.14	9.00	8.00	7.25	4.50	3.18	0.38
M	85000	2	4-3/4	5-1/2	...	1.25	6.50	11.38	10.00	9.00	6.75	5.18	0.41
N	150000	2-7/16	5	6	...	1.50	7.00	12.00	...	10.00	8.12	6.25	0.56
P	250000	2-15/16	5-15/16	7	...	1.75	8.25	14.00	...	11.75	9.38	7.25	0.63
W	375000	4	7-1/2	8-1/2	...	2.00	10.42	17.00	...	15.00	11.38	9.00	0.50
S	625000	5-1/2	9	10	...	3.25	12.13	19.00	...	17.75	15.75	12.00	0.75

\* Torque ratings apply when bushing installation screws are tightened to listed torque. Important: Do not over-torque screws. This can lead to hub damage

## Installation Information

Bush. Sym.	Installation Screws				Required Wrench Clearance							
	B. C. Dia.	Qty.	Size	Screw Torque (Lb - in)	Conventional Mounting				Reverse Mounting			
					L-Install		M-Remove		L-Install		M-Remove	
					#	@	#	@	#	@	#	@
QT / (L)	2	2	1/4-20 x 7/8	90	0.41	2.53	1.13	3.25	1.13	3.25	1.56	3.68
JA	1.65	3	10-24 x 1	60	0.41	2.53	1.13	3.25	1.13	3.25	1.56	3.68
SH	2.25	3	1/4-20x 1-3/8	108	0.54	2.61	1.51	3.58	1.51	3.58	2.08	4.13
SDS	2.69	3	1/4-20 x 1-3/8	108	0.59	2.66	1.56	3.63	1.56	3.63	2.13	4.18
SD	2.69	3	1/4-20 x 1-7/8	108	0.66	2.72	2.06	4.13	2.06	4.13	2.63	4.68
SK	3.31	3	5/16-18 x 2	180	0.72	2.66	2.19	4.19	2.25	4.25	2.32	4.94
SF	3.88	3	3/8-16 x 2	360	0.78	2.78	2.25	4.23	2.30	4.30	3.19	5.18
E	5.00	3	1/2 -13 x 2-3/4	720	1.12	3.06	3.00	4.93	3.05	5.00	4.30	6.25
F	5.63	3	9/16-12 x 3-5/8	900	1.09	2.91	3.94	5.75	3.99	5.81	5.31	7.12
J	6.25	3	5/8-11 x 4-1/2	1620	1.28	3.09	4.81	6.62	3.80	5.62	5.37	7.18
M	7.88	4	3/4-10 x 6-3/4	2700	2.16	4.03	7.69	9.56	...	...	...	...
N	8.50	4	7/8-9 x 8	3600	2.28	...	9.25	...	...	...	...	...
P	10.00	4	1-8 x 9-1/2	5400	3.13	...	10.88	...	...	...	...	...
W	12.75	4	1-1/8-7 x 11-1/2	7200	3.88	...	13.38	...	...	...	...	...
S	15.00	5	1-1/4 -7x 15	9000	3.75	...	16.50	...	...	...	...	...

# Using Open-End Wrench

@ Using Socket Wrench

NOTE: Installation and maintenance instructions for Dodge products available at [www.dodge-pt.com](http://www.dodge-pt.com)

T-L FEATURES/BENEFITS PAGE PT6-2	T-L SPECIFICATION PAGE PT6-3	QD BUSHINGS PAGE PT6-16	GT BUSHINGS PAGE PT6-28
-------------------------------------	---------------------------------	----------------------------	----------------------------



# SPECIFICATION

## Bushings For Bushed FHP Sheave - Stock Bore

## QD Bushings - Stock Bore

QD Bush Size	BORE	P/N Keyway	WT.	Bushing Keyway	Shaft Keyway REF	Key Size REF
QT / (L)	3/8"	121129	0.85	None		
	7/16"	121130	0.82			
	1/2"	121131	0.81	1/8 x 1/16	1/8 x 1/16	1/8 x 1/8
	9/16"	121133	0.80			
	5/8"	122050	0.78	3/16 x 3/32	3/16 x 3/32	3/16 x 3/16
	11/16"	121134	0.76			
	3/4"	121162 +	0.74			
	3/4"	122051	0.74			
	13/16"	121136	0.70			
	7/8"	121163 +	0.68			
	7/8"	122052	0.68			
	15/16"	121138	0.66			
	1"	121164 +	0.62			
	1"	122053	0.62			
	1-1/16"	121140	0.59			
	1-1/8"	121186 +	0.56			
	1-1/8"	122054	0.56			
	1-3/16"	121187 +	0.52			
	1-3/16"	122055	0.52			
	1-1/4"	122056	0.49			
1-5/16"	121144	0.44	5/16 x 1/16	5/16 x 5/32	5/16 x 7/32 *	
1-3/8"	121145	0.43				
1-7/16"	121146	0.38	3/8 x 1/16	3/8 x 3/16	3/8 x 1/4 *	
1-1/2"	121147	0.34				
14MM	121148	0.79	5 x 2.3MM	5 x 3MM	5 x 5MM	
19MM	121149	0.74	6 x 2.8MM	6 x 3.5MM	6 x 6MM	
20MM	121467	0.73				
25MM	121151	0.63	8 X 3.3MM	8 X 4MM	8 X 7MM	
28MM	151152	0.57				
30MM	121153	0.53				
32MM	121154	0.50				10 x 3.3MM

QD Bush Size	Bore	P/N	WT.	Bushing Keyway	Shaft Keyway REF	Key Size REF		
JA	1/2"	120332	0.46	1/8 x 1/16	1/8 x 1/16	1/8 x 1/8		
	9/16"	120333	0.46					
	5/8"	120334	0.45	3/16 x 3/32	3/16 x 3/32	3/16 x 3/16		
	11/16"	120335	0.43					
	3/4"	120336	0.41					
	13/16"	120337	0.40					
	7/8"	120338	0.37					
	15/16"	120339	0.35	1/4 x 1/8	1/4 x 1/8	1/4 x 1/4		
	1"	120340	0.33					
	1-1/16"	120341	0.34	1/4 x 1/16	1/4 x 1/8	1/4 x 3/16 *		
	1-1/8"	120342	0.31					
	1-3/16"	120343	0.29					
	1-1/4"	120344	0.25	None				
	19MM	117049	0.42	6 x 2.8MM	6 x 3.5MM	6 x 6MM		
	20MM	120329	0.41					
	22MM	117043	0.40					
	1/2"	120345	1.16				3/16 x 3/32	3/16 x 3/32
	9/16"	120346	1.14					
	5/8"	120347	1.14					
	11/16"	120348	1.14					
3/4"	120349	1.10						
13/16"	120350	1.07						
7/8"	120351	1.04						
15/16"	120352	1.00	1/4 x 1/8	1/4 x 1/8	1/4 x 1/4			
1"	120353	0.98						
1-1/16"	120354	0.94						
1-1/8"	120355	0.91						
1-3/16"	120356	0.88						
1-1/4"	120357	0.84	5/16 x 5/32	5/16 x 5/32	5/16 x 5/16			
1-5/16"	120358	0.82						
1-3/8"	120359	0.80						
1-7/16"	120360	0.79				3/8 x 1/16	3/8 x 3/16	3/8 x 1/4 *
1-1/2"	120361	0.75						
1-9/16"	120362	0.90						
1-5/8"	120363	0.64						
1-11/16"	120580	0.55	None					
24MM	120088	1.00	8 X 3.3MM	8 X 4MM	8 X 7MM			
25MM	120089	0.99						
28MM	120090	0.93						
30MM	120091	0.87				10 X 3.3MM	10 X 5MM	10 X 8MM
32MM	120092	0.82						
35MM	120093	0.74						
SDS	1/2"	120388	1.65	1/8 x 1/16	1/8 x 1/16	1/8 x 1/8		
	9/16"	120389	1.65					
	5/8"	120390	1.61	3/16 x 3/32	3/16 x 3/32	3/16 x 3/16		
	11/16"	120391	1.60					
	3/4"	120392	1.58					
	13/16"	120393	1.54					
	7/8"	120394	1.54				1/4 x 1/8	1/4 x 1/8
	15/16"	120395	1.50					
	1"	120396	1.46					
	1-1/16"	120397	1.43					
	1-1/8"	120398	1.38	5/16 x 5/32	5/16 x 5/32	5/16 x 5/16		
	1-3/16"	120399	1.36					
	1-1/4"	120400	1.32					
	1-5/16"	120401	1.26					
	1-3/8"	120402	1.24					

P/N's marked (+) are Integral Key Bushings

Bore sizes marked (#) will be supplied with 1/2" wide keyway unless the 5/8" wide keyway is specified when ordering

\* Key furnished for these sizes ONLY

\*\* Key not furnished for MM bores sizes

T-L FEATURES/BENEFITS PAGE PT6-2	T-L SPECIFICATION PAGE PT6-3	QD BUSHINGS PAGE PT6-16	GT BUSHINGS PAGE PT6-28
-------------------------------------	---------------------------------	----------------------------	----------------------------

# SPECIFICATION



## QD Bushings - Stock Bore

QD Bush Size	Bore	P/N	WT.	Bushing Keyway	Shaft Keyway REF	Key Size REF			
SDS (cont)	1-7/16"	120403	1.19	3/8 x 3/16	3/8 x 3/16	3/8 x 3/8			
	1-1/2"	120404	1.15						
	1-9/16"	120405	1.11						
	1-5/8"	120406	1.08						
	1-11/16"	120407	1.08	3/8 x 1/8	3/8 x 3/16	3/8 x 5/16 *			
	1-3/4"	120408	1.02						
	1-13/16"	120409	0.98	1/2 x 1/16	1/2 x 1/4	1/2 x 5/16 *			
	1-7/8"	120410	0.92						
	1-15/16"	120411	0.87						
	2"	120412	0.77	None					
	24MM	120094	1.47	8 X 3.3MM	8 X 4MM	8 X 7MM			
	25MM	120095	1.47						
	28MM	120096	1.41						
	30MM	120097	1.36						
	32MM	120098	1.31	10 X 3.3MM	10 X 5MM	10 X 8MM			
	35MM	120099	1.22						
	38MM	120100	1.00						
	40MM	120101	1.01	12 X 3.3MM	12 X 5MM	12 X 8MM			
42MM	120102	1.02							
SD	1/2"	120364	2.07	1/8 x 1/16	1/8 x 1/16	1/8 x 1/8			
	9/16"	120365	2.05						
	5/8"	120366	2.03						
	11/16"	120367	2.00						
	3/4"	120368	2.00	3/16 x 3/32	3/16 x 3/32	3/16 x 3/16			
	13/16"	120369	2.00						
	7/8"	120370	1.88						
	15/16"	120371	1.85						
	1"	120372	1.80	1/4 x 1/8	1/4 x 1/8	1/4 x 1/4			
	1-1/16"	120373	1.79						
	1-1/8"	120374	1.72						
	1-3/16"	120375	1.67						
	1-1/4"	120376	1.62						
	1-5/16"	120377	1.55				5/16 x 5/32	5/16 x 5/32	5/16 x 5/16
	1-3/8"	120378	1.50						
	1-7/16"	120379	1.44	3/8 x 3/16	3/8 x 3/16	3/8 x 3/8			
	1-1/2"	120380	1.36						
	1-9/16"	120381	1.29						
	1-5/8"	120382	1.29						
	1-11/16"	120383	1.20						
	1-3/4"	120384	1.19				3/8 x 1/8	3/8 x 3/16	3/8 x 5/16 *
	1-13/16"	120385	1.15						
	1-7/8"	120386	1.07				1/2 x 1/16	1/2 x 1/4	1/2 x 5/16 *
	1-15/16"	120387	1.00						
	2"	120581	0.84						
	24MM	120103	1.84	8 X 3.3MM	8 X 4MM	8 X 7MM			
	25MM	120104	1.82						
	28MM	120105	1.72						
	30MM	120106	1.66						
	32MM	120107	1.58				10 X 3.3MM	10 X 5MM	10 X 8MM
35MM	120108	1.49							
38MM	120109	1.37							
40MM	120110	1.28	12 X 3.3MM	12 X 5MM	12 X 8MM				
42MM	120111	1.18							

P/N's marked (+) are Integral Key Bushings

Bore sizes marked (#) will be supplied with 1/2" wide keyway unless the 5/8" wide keyway is specified when ordering

\* Key furnished for these sizes ONLY

\*\* Key not furnished for MM bores sizes

QD Bush Size	Bore	P/N	WT.	Bushing Keyway	Shaft Keyway REF	Key Size REF			
SK	1/2"	120413	3.77	1/8 x 1/16	1/8 x 1/16	1/8 x 1/8			
	9/16"	120414	3.74						
	5/8"	120415	3.72	3/16 x 3/32	3/16 x 3/32	3/16 x 3/16			
	11/16"	120416	3.70						
	3/4"	120417	3.61						
	13/16"	120418	3.53						
	7/8"	120419	3.58						
	15/16"	120420	3.52	1/4 x 1/8	1/4 x 1/8	1/4 x 1/4			
	1"	120421	3.45						
	1-1/16"	120422	3.41						
	1-1/8"	120423	3.37						
	1-3/16"	120424	3.31						
	1-1/4"	120425	3.31						
	1-5/16"	120426	3.18				5/16 x 5/32	5/16 x 5/32	5/16 x 5/16
	1-3/8"	120427	3.12						
	1-7/16"	120428	3.08				3/8 x 3/16	3/8 x 3/16	3/8 x 3/8
	1-1/2"	120429	3.00						
	1-9/16"	120430	2.95						
	1-5/8"	120431	2.86						
	1-11/16"	120432	2.79						
	1-3/4"	120433	2.88						
	1-13/16"	120434	2.62	1/2 x 1/4	1/2 x 1/4	1/2 x 1/2			
	1-7/8"	120435	2.50						
	1-15/16"	120436	2.42						
	2"	120437	2.32						
	2-1/16"	120438	2.26	1/2 x 3/16	1/2 x 1/4	1/2 x 7/16 *			
	2-1/8"	120439	2.17						
	2-3/16"	120440	2.21	2-1/4"	2-1/4"	2-1/4"			
	2-1/4"	120441	2.09						
	2-5/16"	120442	2.00	5/8 x 1/16	5/8 x 5/16	5/8 x 3/8 *			
2-3/8"	120443	1.91							
2-7/16"	120444	1.81							
2-1/2"	120445	1.72							
2-5/8"	120447	1.32	None						
24MM	120112	3.52	8 X 3.3MM	8 X 4MM	8 X 7MM				
25MM	120113	3.50							
28MM	120114	3.41							
30MM	120115	3.31							
32MM	120116	3.31				10 X 3.3MM	10 X 5MM	10 X 8MM	
35MM	120117	3.12							
38MM	120118	2.98							
40MM	120119	2.95	12 X 3.3MM	12 X 5MM	12 X 8MM				
42MM	120120	2.86							
45MM	120070	2.69	14 X 3.8MM	14 X 5.5MM	14 X 9MM				
48MM	120121	2.50							
50MM	120122	2.40							
55MM	120123	2.17				16 X 4.3MM	16 X 6MM	16 X 10MM	
SF	1/2"	120448	5.27	1/8 x 1/4	1/8 x 1/4	1/8 x 1/8			
	9/16"	120449	5.27						
	5/8"	120450	5.22	3/16 x 3/32	3/16 x 3/32	3/16 x 3/16			
	11/16"	120451	5.20						
	3/4"	120452	5.17						
	13/16"	120453	5.32						
	7/8"	120454	5.08						
	15/16"	120455	5.05	1/4 x 1/8	1/4 x 1/8	1/4 x 1/4			
	1"	120456	5.00						
	1-1/16"	120457	4.95						
	1-1/8"	120458	4.90						
	1-3/16"	120459	4.83						
1-1/4"	120460	4.77							

T-L FEATURES/BENEFITS PAGE PT6-2	T-L SPECIFICATION PAGE PT6-3	QD BUSHINGS PAGE PT6-16	GT BUSHINGS PAGE PT6-28
-------------------------------------	---------------------------------	----------------------------	----------------------------



# SPECIFICATION

## QD Bushings - Stock Bore

QD Bush Size	Bore	P/N	WT.	Bushing Keyway	Shaft Keyway REF	Key Size REF
SF (cont)	1-5/16"	120461	4.71	5/16 x 5/32	5/16 x 5/32	5/16 x 5/16
	1-3/8"	120462	4.61			
	1-7/16"	120463	4.57			
	1-1/2"	120464	4.48			
	1-9/16"	120465	4.42			
	1-5/8"	120466	4.32			
	1-11/16"	120467	4.31	3/8 x 3/16	3/8 x 3/16	3/8 x 3/8
	1-3/4"	120468	4.16			
	1-13/16"	120469	4.06			
	1-7/8"	120470	4.00			
	1-15/16"	120471	3.87			
	2"	120472	3.78			
	2-1/16"	120473	3.70	1/2 x 1/4	1/2 x 1/4	1/2 x 1/2
	2-1/8"	120474	3.57			
	2-3/16"	120475	3.45			
	2-1/4"	120476	3.38			
	2-5/16"	120477	3.32			
	2-3/8"	120478	3.39			
	2-7/16"	120479	3.26	5/8 x 3/16	5/8 x 5/16	5/8 x 1/2 *
	2-1/2"	120592	3.16			
	2-5/8"	120482	2.91			
	2-11/16"	120483	2.80	5/8 x 1/16	5/8 x 5/16	5/8 x 3/8 *
	2-3/4"	120484	2.59			
	2-13/16"	120485	2.50			
	2-7/8"	120486	2.35	3/4 x 1/16	3/4 x 3/8	3/4 x 7/16 *
	2-15/16"	120487	2.22			
	28MM	120124	5.00			
	30MM	120125	4.90	8 X 3.3MM	8 X 4MM	8 X 7MM
	32MM	120126	4.77			
	35MM	120127	4.61			
38MM	120128	4.48				
40MM	120129	4.42	12 X 3.3MM	12 X 5MM	12 X 8MM	
42MM	120130	4.32				
45MM	120071	4.16	14 X 3.8MM	14 X 5.5MM	14 X 9MM	
48MM	120131	4.00				
50MM	120132	3.87				
55MM	120133	3.57	16 X 4.3MM	16 X 6MM	16 X 10MM	
60MM	120134	3.39				
E	7/8"	120488	11.80	3/16 x 3/32	3/16 x 3/32	3/16 x 3/16
	1"	120490	11.65			
	1-1/8"	120492	11.46			
	1-3/16"	120493	11.40			
	1-1/4"	120494	11.33	1/4 x 1/8	1/4 x 1/8	1/4 x 1/4
	1-5/16"	120495	11.26			
	1-3/8"	120496	11.20			
	1-7/16"	120497	11.13			
	1-1/2"	120498	10.86	3/8 x 3/16	3/8 x 3/16	3/8 x 3/8
	1-9/16"	120499	10.82			
	1-5/8"	120500	10.69			
	1-11/16"	120501	10.56			
	1-3/4"	120502	10.46			

QD Bush Size	Bore	P/N	WT.	Bushing Keyway	Shaft Keyway REF	Key Size REF
E (cont)	1-13/16"	120503	10.16	1/2 x 1/4	1/2 x 1/4	1/2 x 1/2
	1-7/8"	120504	10.16			
	1-15/16"	120505	10.16			
	2"	120506	10.01			
	2-1/16"	120507	9.85			
	2-1/8"	120508	9.73			
	2-3/16"	120509	9.42	5/8 x 5/16	5/8 x 5/16	5/8 x 5/8
	2-1/4"	120510	9.42			
	2-5/16"	120511	9.07			
	2-3/8"	120512	8.95			
	2-7/16"	120513	8.77			
	2-1/2"	120514	8.72			
	2-5/8"	120516	8.37	3/4 x 3/8	3/4 x 3/8	3/4 x 3/4
	2-11/16"	120517	8.05			
	2-3/4"	120518	7.90			
	2-13/16"	120519	7.70			
	2-7/8"	120520	7.32	3/4 x 1/8	3/4 x 3/8	3/4 x 1/2 *
	2-15/16"	120521	7.53			
	3"	120522	7.31			
	3-1/8"	120524	6.90			
	3-3/16"	120525	6.69	7/8 x 1/8	7/8 x 7/16	7/8 x 9/16 *
	3-1/4"	120526	6.48			
	3-5/16"	120527	6.10	7/8 x 1/16	7/8 x 7/16	7/8 x 1/2 *
	3-3/8"	120528	6.21			
	3-7/16"	120529	5.86			
	3-1/2"	120530	5.73	8 X 3.3MM	8 X 4MM	8 X 7MM
	28MM	120073	10.20			
	30MM	120074	10.20	10 X 3.3MM	10 X 5MM	10 X 8MM
	32MM	120075	10.20			
	35MM	120135	10.20			
38MM	120136	10.00				
40MM	120137	10.88	12 X 3.3MM	12 X 5MM	12 X 8MM	
42MM	120138	9.80				
45MM	120141	9.60	14 X 3.8MM	14 X 5.5MM	14 X 9MM	
48MM	120139	10.26				
50MM	120140	10.06				
55MM	120142	9.56	16 X 4.3MM	16 X 6MM	16 X 10MM	
60MM	120143	9.10				
65MM	120144	9.60	18 X 4.4MM	18 X 7MM	18 X 11MM	
70MM	120145	7.87				
75MM	120146	7.28				
F	1"	120531	19.41	1/4 x 1/8	1/4 x 1/8	1/4 x 1/4
	1-1/8"	120533	19.15			
	1-3/16"	120534	18.00			
	1-1/4"	120535	18.99			
	1-3/8"	120537	18.68	3/8 x 3/16	3/8 x 3/16	3/8 x 3/8
	1-7/16"	120538	18.56			
	1-1/2"	120539	18.48			
	1-9/16"	120540	18.40			
	1-5/8"	120541	18.15			
	1-11/16"	120542	17.91			
	1-3/4"	120543	16.77	1/2 x 1/4	1/2 x 1/4	1/2 x 1/2
	1-13/16"	120544	17.62			
	1-7/8"	120545	16.41			
	1-15/16"	120546	16.00			
	2"	120547	16.00			
2-1/16"	120548	16.00				
2-1/8"	120549	15.95	120550	120550	120550	
2-3/16"	120550	15.95				
2-1/4"	120551	15.95				

P/N's marked (+) are Integral Key Bushings

Bore sizes marked (#) will be supplied with 1/2" wide keyway unless the 5/8" wide keyway is specified when ordering

\* Key furnished for these sizes ONLY

\*\* Key not furnished for MM bores sizes

# SPECIFICATION



## QD Bushings - Stock Bore

QD Bush Size	Bore	P/N	WT.	Bushing Keyway	Shaft Keyway REF	Key Size REF
<b>F</b> (cont)	2-5/16"	<b>120552</b>	15.95	5/8 x 5/16	5/8 x 5/16	5/8 x 5/8
	2-3/8"	<b>120553</b>	15.50			
	2-7/16"	<b>120554</b>	15.50			
	2-1/2"	<b>120555</b>	15.37			
	2-5/8"	<b>120557</b>	14.86			
	2-11/16"	<b>120558</b>	14.50			
	2-3/4"	<b>120559</b>	14.37	3/4 x 3/8	3/4 x 3/8	3/4 x 3/4
	2-13/16"	<b>120560</b>	14.00			
	2-7/8"	<b>120561</b>	14.02			
	2-15/16"	<b>120562</b>	13.47			
	3"	<b>120563</b>	13.20			
	3-1/8"	<b>120565</b>	12.67			
	3-3/16"	<b>120566</b>	12.50	7/8 x 3/16	7/8 x 7/16	7/8 x 5/8 *
	3-1/4"	<b>120567</b>	12.00			
	3-3/8"	<b>120569</b>	12.00			
	3-7/16"	<b>120570</b>	11.88			
	3-1/2"	<b>120571</b>	11.40			
	3-5/8"	<b>120573</b>	10.53			
	3-11/16"	<b>120574</b>	14.00	1 x 1/8	1 x 1/2	1 x 5/8 *
	3-3/4"	<b>120575</b>	9.89			
	3-7/8"	<b>120577</b>	9.26			
	3-15/16"	<b>120578</b>	9.23			
	4"	<b>120579</b>	7.96			
	45MM	<b>120076</b>	16.20			
	48MM	<b>120147</b>	16.00	14 X 3.8MM	14 X 5.5MM	14 X 9MM
	50MM	<b>120148</b>	15.80			
	55MM	<b>120149</b>	15.80	16 X 4.3MM	16 X 6MM	16 X 10MM
	60MM	<b>120150</b>	15.80	18 X 4.4MM	18 X 7MM	18 X 11MM
65MM	<b>120151</b>	14.30				
70MM	<b>120152</b>	14.30	20 X 4.9MM	20 x 7.5MM	20 X 12MM	
75MM	<b>120153</b>	13.50				
80MM	<b>120154</b>	12.55	22 X 5.4MM	22 X 9MM	22 X 14MM	
85MM	<b>120155</b>	10.60				
90MM	<b>120077</b>	10.50	25 X 5.4MM	25 X 9MM	25 X 14MM	
<b>J</b>	1-1/2"	<b>120600</b>	28.97	3/8 x 3/16	3/8 x 3/16	3/8 x 3/8
	1-5/8"	<b>120601</b>	28.61			
	1-3/4"	<b>120603</b>	28.28			
	1-7/8"	<b>120604</b>	27.79	1/2 x 1/4	1/2 x 1/4	1/2 x 1/2
	1-15/16"	<b>120605</b>	27.53			
	2"	<b>120606</b>	27.33			
	2-1/8"	<b>120607</b>	26.74			
	2-3/16"	<b>120608</b>	26.37			
	2-1/4"	<b>120609</b>	26.32			
	2-3/8"	<b>120610</b>	25.65	5/8 x 5/16	5/8 x 5/16	5/8 x 5/8
	2-7/16"	<b>120611</b>	25.52			
	2-1/2"	<b>120612</b>	25.05			
	2-5/8"	<b>120613</b>	24.50			
	2-11/16"	<b>120614</b>	24.18			
	2-3/4"	<b>120615</b>	23.86			

QD Bush Size	Bore	P/N	WT.	Bushing Keyway	Shaft Keyway REF	Key Size REF			
<b>J</b> (cont)	2-7/8"	<b>120617</b>	23.15	3/4 x 3/8	3/4 x 3/8	3/4 x 3/4			
	2-15/16"	<b>120618</b>	23.07						
	3"	<b>120619</b>	22.43						
	3-1/8"	<b>120620</b>	21.68						
	3-3/16"	<b>120621</b>	21.35						
	3-1/4"	<b>120622</b>	20.98						
	3-3/8"	<b>120623</b>	20.33	7/8 x 7/16	7/8 x 7/16	7/8 x 7/8			
	3-7/16"	<b>120624</b>	21.13						
	3-1/2"	<b>120625</b>	19.58						
	3-5/8"	<b>120626</b>	18.44						
	3-11/16"	<b>120627</b>	18.04						
	3-3/4"	<b>120628</b>	17.62						
	3-7/8"	<b>120629</b>	17.94	1 x 1/8	1 x 1/2	1 x 5/8 *			
	3-15/16"	<b>120630</b>	17.38						
	4"	<b>120631</b>	16.62						
	4-1/8"	<b>120632</b>	15.69						
	4-3/16"	<b>120633</b>	14.55						
	4-1/4"	<b>120634</b>	14.68						
	4-3/8"	<b>120635</b>	14.00	14 X 3.8MM	14 X 5.5MM	14 X 9MM			
	4-7/16"	<b>120636</b>	13.49						
	4-1/2"	<b>120637</b>	12.67						
	50MM	<b>120157</b>	26.50				16 X 4.3MM	16 X 6MM	16 X 10MM
	55MM	<b>120158</b>	25.60				18 X 4.4MM	18 X 7MM	18 X 11MM
	60MM	<b>120159</b>	25.82						
	65MM	<b>120160</b>	25.25	20 X 4.9MM	20 x 7.5MM	20 X 12MM			
	70MM	<b>120161</b>	24.04						
	75MM	<b>120162</b>	21.90	22 X 5.4MM	22 X 9MM	22 X 14MM			
	80MM	<b>120163</b>	20.90						
	85MM	<b>120164</b>	20.52	25 X 5.4MM	25 X 9MM	25 X 14MM			
	90MM	<b>120165</b>	18.10						
	95MM	<b>120166</b>	16.80	26 X 6.4MM	28 X 10MM	28 X 16MM			
	100MM	<b>120167</b>	16.50						
	<b>M</b>	2"	<b>119900</b>	62.65	1/2 x 1/4	1/2 x 1/4	1/2 x 1/2		
		2-1/8"	<b>119901</b>	62.65					
2-3/16"		<b>119902</b>	61.58						
2-1/4"		<b>119903</b>	61.14	5/8 x 5/16	5/8 x 5/16	5/8 x 5/8			
2-3/8"		<b>119904</b>	59.50						
2-7/16"		<b>119905</b>	59.35						
2-1/2"		<b>119906</b>	59.21						
2-5/8"		<b>119907</b>	58.69						
2-3/4"		<b>119908</b>	57.86						
2-7/8"		<b>119909</b>	56.57	3/4 x 3/8	3/4 x 3/8	3/4 x 3/4			
2-15/16"		<b>119910</b>	56.17						
3"		<b>119911</b>	56.10						
3-1/8"		<b>119912</b>	55.82						
3-3/16"		<b>119913</b>	53.84						
3-1/4"		<b>119914</b>	53.42						
3-3/8"		<b>119915</b>	52.06	7/8 x 7/16	7/8 x 7/16	7/8 x 7/8			
3-7/16"		<b>119916</b>	52.04						
3-1/2"		<b>119917</b>	51.12						
3-5/8"	<b>119918</b>	50.08							
3-11/16"	<b>119919</b>	49.00							
3-3/4"	<b>119920</b>	48.47							
3-7/8"	<b>119921</b>	47.03	1 x 1/2	1 x 1/2	1 x 1				
3-15/16"	<b>119922</b>	46.26							
4"	<b>119923</b>	46.09							
4-1/8"	<b>119924</b>	44.31							
4-3/16"	<b>119925</b>	43.64							
4-1/4"	<b>119926</b>	42.81							

P/N's marked (+) are Integral Key Bushings

Bore sizes marked (#) will be supplied with 1/2" wide keyway unless the 5/8" wide keyway is specified when ordering

\* Key furnished for these sizes ONLY

\*\* Key not furnished for MM bores sizes

T-L FEATURES/BENEFITS PAGE PT6-2	T-L SPECIFICATION PAGE PT6-3	QD BUSHINGS PAGE PT6-16	GT BUSHINGS PAGE PT6-28
-------------------------------------	---------------------------------	----------------------------	----------------------------



# SPECIFICATION

## QD Bushings - Stock Bore

QD Bush Size	Bore	P/N	WT.	Bushing Keyway	Shaft Keyway REF	Key Size REF
M (cont)	4-3/8"	119927	41.46			
	4-7/16"	119928	40.60	1 x 1/2	1 x 1/2	1 x 1
	4-1/2"	119929	40.27			
	4-11/16"	119930	37.12	1-1/4 x 5/8	1-1/4 x 5/8	1-1/4 x 1-1/4
	4-3/4"	119931	37.00			
	4-7/8"	119932	36.89			
	4-15/16"	119933	36.13			
	5"	119934	35.66			
	5-1/8"	119899	35.00	1-1/4 x 1/4	1-1/4 x 5/8	1-1/4 x 7/8 *
	5-3/16"	119894	35.00			
	5-1/4"	119935	30.00			
	5-7/16"	119936	30.00			
	5-1/2"	119937	29.00			
N	2-7/16"	119940	87.57	5/8 x 5/16	5/8 x 5/16	5/8 x 5/8
	2-15/16"	119941	83.00	3/4 x 3/8	3/4 x 3/8	3/4 x 3/4
	3-7/16"	119942	80.00			
	3-1/2"	119980	80.00	7/8 x 7/16	7/8 x 7/16	7/8 x 7/8
	3-3/4"	119943	80.00			
	3-7/8"	119944	80.00			
	3-15/16"	119945	80.00			
	4"	119946	80.00			
	4-3/16"	119947	80.00	1 x 1/2	1 x 1/2	1 x 1
	4-1/4"	119948	80.00			
	4-3/8"	119982	79.00			
	4-7/16"	119949	78.00			
	4-1/2"	119950	77.00			
	4-11/16"	119983	76.00			
	4-3/4"	119951	75.00	1-1/4 x 5/8	1-1/4 x 5/8	1-1/4 x 1-1/4
	4-7/8"	119952	74.00			
	4-15/16"	119953	73.00			
	5"	119954	72.00			
	5-1/8"	119955	71.00			
	5-3/16"	119986	70.50	1-1/4 x 1/4	1-1/4 x 5/8	1-1/4 x 7/8 *
5-1/4"	119956	70.00				
5-7/16"	119957	52.19				
5-1/2"	119958	49.02				
5-3/4"	119959	49.00				
5-7/8"	119960	44.00	1-1/2 x 1/8	1-1/2 x 3/4	1-1/2 x 7/8 *	
5-15/16"	119961	43.00				
6"	119962	42.00				

QD Bush Size	Bore	P/N	WT.	Bushing Keyway	Shaft Keyway REF	Key Size REF
P	3-7/16"	119965	134.00	7/8 x 7/16	7/8 x 7/16	7/8 x 7/8
	3-15/16"	119966	122.00			
	4"	119987	122.00	1 x 1/2	1 x 1/2	1 x 1
	4-7/16"	119967	122.40			
	4-1/2"	119968	121.00			
	4-3/4"	119969	120.00			
	4-7/8"	119985	120.00			
	4-15/16"	119970	119.00	1-1/4 x 5/8	1-1/4 x 5/8	1-1/4 x 1-1/4
	5"	119971	115.00			
	5-3/16"	119984	114.00			
	5-7/16"	119972	113.00			
	5-1/2"	119973	100.00			
	5-15/16"	119974	94.00			
	6"	119975	93.70			
	6-7/16"	119976	83.50	1-1/2 x 1/4	1-1/2 x 3/4	1-1/2 x 1 *
6-1/2"	119977	80.50				
7"	119978	68.00	1-3/4 x 1/8	1-3/4 x 3/4	1-3/4 x 7/8 *	
W	4-1/4"	120180	260.00			
	4-7/16"	120181	256.60	1 x 1/2	1 x 1/2	1 x 1
	4-1/2"	120182	255.40			
	4-3/4"	120183	250.00			
	5"	120186	244.30	1-1/4 x 5/8	1-1/4 x 5/8	1-1/4 x 1-1/4
	5-3/8"	120188	235.30			
	5-1/2"	120189	232.20			
	5-3/4"	120190	225.70			
	5-7/8"	120191	222.30			
	5-15/16"	120192	220.00	1-1/2 x 3/4	1-1/2 x 3/4	1-1/2 x 1-1/2
	6"	120193	218.90			
	6-1/2"	120194	215.00			
	6-3/4"	120328	210.00			
	7"	120196	184.90	1-3/4 x 3/4	1-3/4 x 3/4	1-3/4 x 1-1/2
	7-1/4"	120197	184.40			
7-1/2"	120198	175.80				
7-3/4"	120199	172.00	2 x 1/4	2 x 3/4	2 x 1 *	
8"	120200	159.70				

**S** ▼ Bushings size available please call Dodge for information

P/N's marked (+) are Integral Key Bushings

Bore sizes marked (#) will be supplied with 1/2" wide keyway unless the 5/8" wide keyway is specified when ordering

\* Key furnished for these sizes ONLY

\*\* Key not furnished for MM bores sizes

T-L FEATURES/BENEFITS PAGE PT6-2	T-L SPECIFICATION PAGE PT6-3	QD BUSHINGS PAGE PT6-16	GT BUSHINGS PAGE PT6-28
-------------------------------------	---------------------------------	----------------------------	----------------------------



# SPECIFICATION

## QD Reborable

QD Bush Size	Sintered Steel		Cast Iron		Ductile Iron	
	Bore	P/N	Bore	P/N	Bore	P/N
QT (L)	3/8"	120595				
JA	1/2"	120050				
SH	1/2"	120051			1/2"	119876
SDS	1/2"	120052			1-7/16"	119877
SD	1/2"	120053			1-9/16"	119878
SK	1/2"	120054			2"	119879
SF	1/2"	120055			2-5/16"	119880
E			7/8"	120056	7/8"	119881
F			1"	120057	1"	119882
J			1-1/2"	120058	1-1/2"	119883
M			2"	119938	2"	119884
N			2-7/16"	119963	2-7/16"	119885
P			3-7/16"	119979	3-7/16"	119886
W			4"	120276		
S			5-1/2"	394059		

**NOTE:** All reborable bushings are stocked without sawsplit to facilitate re-maching. Sawsplit must be made in bushing to allow it to compress for proper gripping of the shaft. Factory rebore and keyseat service as listed in MLP price book includes sawsplit.

## QD - Maximum Bore Capacities

QD Bush Size	Sintered Steel			Cast Iron			Ductile Iron			
	Full Key	Shallow Key	Metric	Full Key	Shallow Key	Metric	Full Key	Shallow Key	No Key*	Metric
QT (L)										
JA	1"	1-1/16"	25				1"	1-3/16"	1-1/4"	25
SH	1-1/4"	1-1/4"	30				1-3/8"	1-5/8"	1-11/16"	35
SDS	1-9/16"	1-5/8"	40				1-5/8"	1-15/16"	2"	42
SD	1-9/16"	1-9/16"	40				1-11/16"	1-15/16"	2"	42
SK	2"	2-1/16"	50				2-1/2"	2-1/2"	2-5/8"	55
SF	2-1/4"	2-3/8"	55				2-5/16"	2-15/16"	2-15/16"	65
E				2-3/4"	3"	70	2-7/8"	3-1/2"	3-1/2"	89
F				3-1/4"	3-7/16"	90	3-1/4"	3-15/16"	4"	101
J				3-3/4"	3-7/8"	100	3-3/4"	4-1/2"	4-1/2"	114
M				4-3/4"	5"	120	4-3/4"	5-1/2"	5-1/2"	139
N				5"	5-1/4"	130	5"	6"	6"	149
P				5-1/2"	7"	160	5-1/2"	7"	7"	177
W				6-1/2"	7"	165	6-1/2"	8-1/2"	8-1/2"	216
S				8-1/4"	8-1/4"	209	8-1/4"	10"	10"	250

**NOTE:** ISO STANDARD METHOD FOR MEASURING KEYSEAT DEPTH  
MM Bore and Keyway dimensions conform to ISO standard recommendation R773, for "Free" fit

### REFERENCE:

1 inch = 25.4 millimeters  
1 millimeter = .03937 inches

\* Verify torque capacity: Contact Application Engineering for assistance

T-L FEATURES/BENEFITS PAGE PT6-2	T-L SPECIFICATION PAGE PT6-3	QD BUSHINGS PAGE PT6-16	GT BUSHINGS PAGE PT6-28
-------------------------------------	---------------------------------	----------------------------	----------------------------