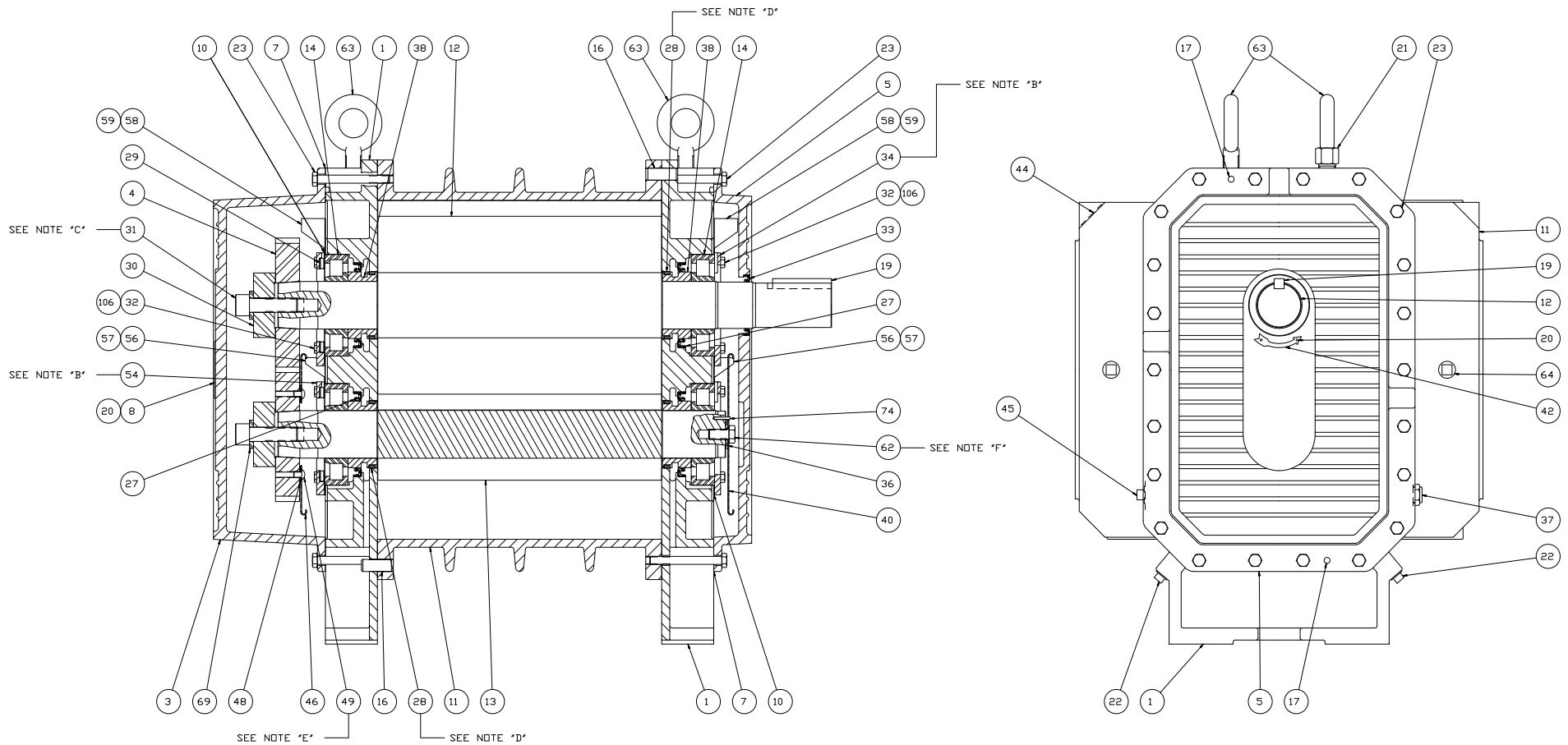


Table 4 - Parts Identification for Figure 4 or 5

Item #	Part Name	Qty.
1	Headplate	2
3	Gearbox	1
4	Gear	2
5	Drive End Cover	1
7	Gasket	2
8	Nameplate	1
9	Lubrication Label	2
10	Shim	4
11	Cylinder	1
12	Impeller & Shaft Drive	1
13	Impeller & Shaft Driven	1
14	Bearing	4
16	Pin. Dowel	4
17	Spring Pin	2
19	Key	1
20	Drive Screw	10
21	Breather-Filler Plug	2
22	Drain Plug	4
23	Capscrew	44
27	Seal-Lip, Headplate	4
28	Seal Ring	4
29	Washer, Wavy Spring	2
30	Washer-Gear Mounting	2
31	Capscrew	2
32	Capscrew	16
33	Seal, Lip D.E. Cover	1
34	Clamp Plate, Drive End	2
36	Lockwasher	1
37	Oil Level Gauge	2
38	Sleeve	4
40	Slinger - D.E.	1
42	Rotation Arrow	1
44	Label, Whispair	2
45	Pipe Plug	2
46	Slinger - G.E.	1
48	Washer	2
49	Capscrew-Butt. Hd.	2
54	Clamp Plate, Gear End	2
56	Oil Leader, G.E. & D.E. Left Side Driven Impeller	2
57	Oil Leader, G.E. & D.E. Right Side Driven Impeller	2
58	Oil Leader, G.E. & D.E. Right Side Driven Impeller	2
59	Oil Leader, G.E. & D.E. Left Side Driven Impeller	2
62	Capscrew	1
63	Eyebolt	2
64	Pipe Plug	4
69	Washer	6
74	Spring Pin	1

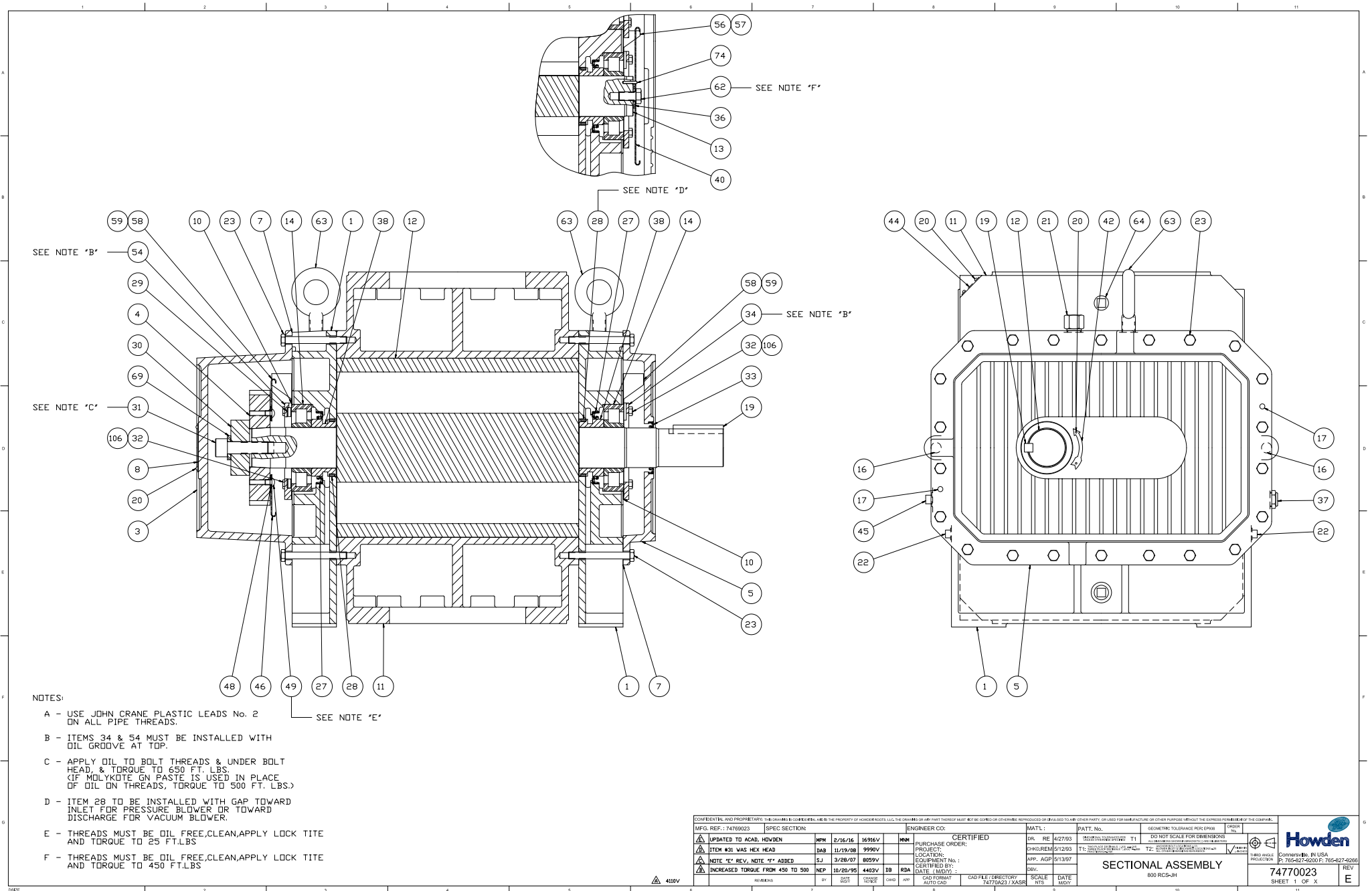


NOTES:

- A - USE JOHN CRANE PLASTIC LEADS No. 2 ON ALL PIPE THREADS.
- B - ITEMS 34 & 54 MUST BE INSTALLED WITH OIL GROOVE AT TOP.
- C - APPLY OIL TO BOLT THREADS & UNDER BOLT HEAD & TORQUE TO 650 FT. LBS. (IF MOLYKOTE GN PASTE IS USED IN PLACE OF OIL ON THREADS, TORQUE TO 500 FT. LBS.)
- D - ITEM 28 TO BE INSTALLED WITH GAP TOWARD INLET FOR PRESSURE BLOWER OR TOWARD DISCHARGE FOR VACUUM BLOWER.
- E - THREADS MUST BE OIL FREE, CLEAN, APPLY LOCK TITE AND TORQUE TO 25 FT.LBS
- F - THREADS MUST BE OIL FREE, CLEAN, APPLY LOCK TITE AND TORQUE TO 450 FT.LBS

<small>CONFIDENTIAL AND PROPRIETARY: THIS DRAWING IS CONFIDENTIAL AND IS THE PROPERTY OF HOWDEN ROOLS, LLC. THE DRAWING OR ANY PART THEREOF MUST NOT BE COPIED OR OTHERWISE REPRODUCED OR DISCLOSED TO ANY OTHER PARTY OR USED FOR ANY PURPOSE OR OTHER PURPOSE WITHOUT THE EXPRESS PERMISSION OF THE COMPANY.</small>				<small>ENGINEER CODE:</small>				<small>MAT'L:</small>				<small>PATT. No.</small>				<small>3792-01</small>											
<small>MPG. REF. : 67737013</small>				<small>SPEC SECTION:</small>				<small>HOWDEN</small>				<small>CERTIFIED</small>				<small>DR. RE. A293</small>				<small>PATT. No. T1</small>				<small>DO NOT SCALE FOR DIMENSIONS</small>			
<small>UPDATED TO ACAD. HOWDEN</small>				<small>WH 2/16/16</small>				<small>16916V</small>				<small>PURCHASE ORDER:</small>				<small>HOWDEN REM. 5/12/03</small>				<small>T1: 74769023</small>				<small>T2: 74769023</small>			
<small>ITEM #31 WAS HEX HEAD</small>				<small>DAB 11/19/08</small>				<small>9990V</small>				<small>LOCATION:</small>				<small>APP. AGP 5/12/03</small>				<small>THIRD ANGLE PROJECTION</small>							
<small>NOTE 'E' REV. NOTE 'F' ADDED</small>				<small>SJ 3/28/07</small>				<small>8059V</small>				<small>EQUIPMENT No.:</small>				<small>CERTIFIED BY:</small>				<small>SCALE</small>							
<small>ADDED ITEM #20</small>				<small>AKP 11/18/05</small>				<small>7614V</small>				<small>DATE (MM/DD/YY):</small>				<small>DATE</small>											
<small>770</small>				<small>4483V</small>				<small>4100V</small>				<small>APP. AGP</small>				<small>CAD FILE (DIRECTORY):</small>				<small>SCALE</small>							
<small>REV. 01</small>				<small>DATE</small>				<small>CHANGE</small>				<small>HOWDEN</small>				<small>APP. AGP</small>				<small>CAD FILE (DIRECTORY):</small>				<small>SCALE</small>			
<small>74769023 / 26ASR</small>				<small>74769023 / 26ASR</small>				<small>74769023 / 26ASR</small>				<small>74769023 / 26ASR</small>				<small>74769023 / 26ASR</small>				<small>74769023 / 26ASR</small>							

Figure 4 - Assembly of RCS-J WHISPAIR Vertical Style Blower



CONFIDENTIAL AND PROPRIETARY. THE DRAWING IS THE PROPERTY OF HOWDEN BLOWERS, LLC. THE DRAWING OR ANY PART THEREOF MUST NOT BE COPIED OR OTHERWISE REPRODUCED OR DELIVERED TO ANY OTHER PARTY, OR USED FOR MANUFACTURE OR OTHER PURPOSE, WITHOUT THE EXPRESS PERMISSION OF THE COMPANY.				ENGINEER CO:		MATERIAL:		PATT. No.		GEOMETRIC TOLERANCE PER EPR308		ORDER No.	
MFG. REF.: 74760023	SPEC SECTIONS:			MM	CERTIFIED	DR. RE	4/27/93	T1	DO NOT SCALE FOR DIMENSIONS			 Howden Cincinnati, OH, USA P: 765-427-4200 F: 765-427-4286	
⚠️ UPDATED TO ACAD, HOWDEN ⚠️ ITEM #31 WAS HEX HEAD ⚠️ NOTE "E" REV, NOTE "F" ADDED ⚠️ INCREASED TORQUE FROM 450 TO 500	MPM	2/16/16	16916V	DAB	11/19/98	9990V	CHROREM	9/12/93	T2	ALL DIMENSIONS UNLESS OTHERWISE SPECIFIED			SHEET PROTECTION SECTIONAL ASSEMBLY 800 RCS-JH 74770023 SHEET 1 OF X
PURCHASE ORDER: PROJECT: LOCATION: EQUIPMENT No.: DATE (MM/DD): CAD FORMAT: AUTO CAD	NEP	3/28/07	8059V	SJ	10/20/95	4403V	DB	RDA	APP. AGP	9/13/97	SCALE:	DATE:	REV
4110V	SEARCHING	BY:	DATE:	DATE:	DATE:	DATE:	DATE:	DATE:	DATE:	DATE:	DATE:	DATE:	E

Figure 5 - Assembly of RCS-J WHISPAIR Horizontal Style Blower

Figure 8 - Vertical and Horizontal Blower Oil Cooler Installation

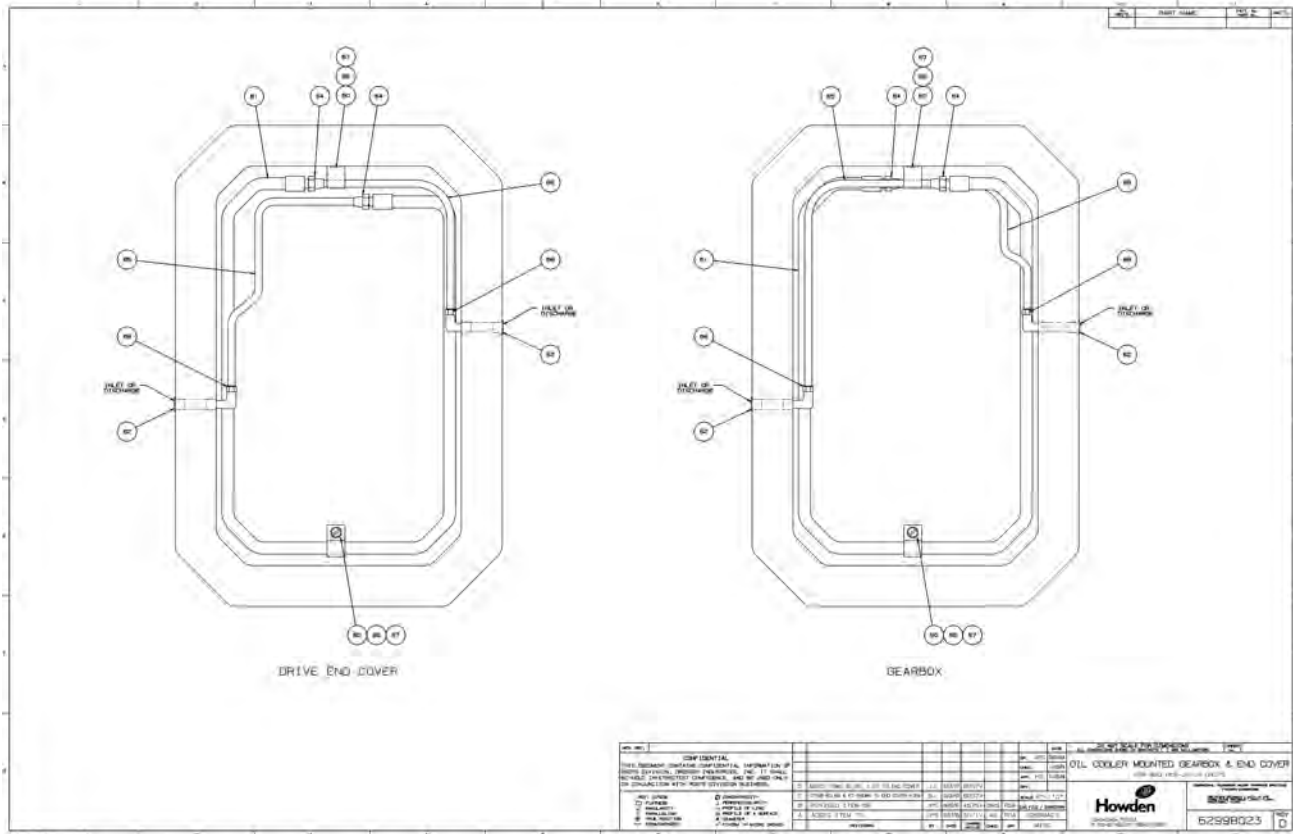


Table 5 - Parts Identification List for Figure 8

Item #	Part Name	Qty.
60	Clamp - Oil Cooler	4
61	Oil Cooler	2
62	Cover Plug - Inlet, Outlet	4
64	Union Nut	4
65	Copper Tubing	2
66	Lockwasher	4
67	Capscrew	4
68	Adapter	4