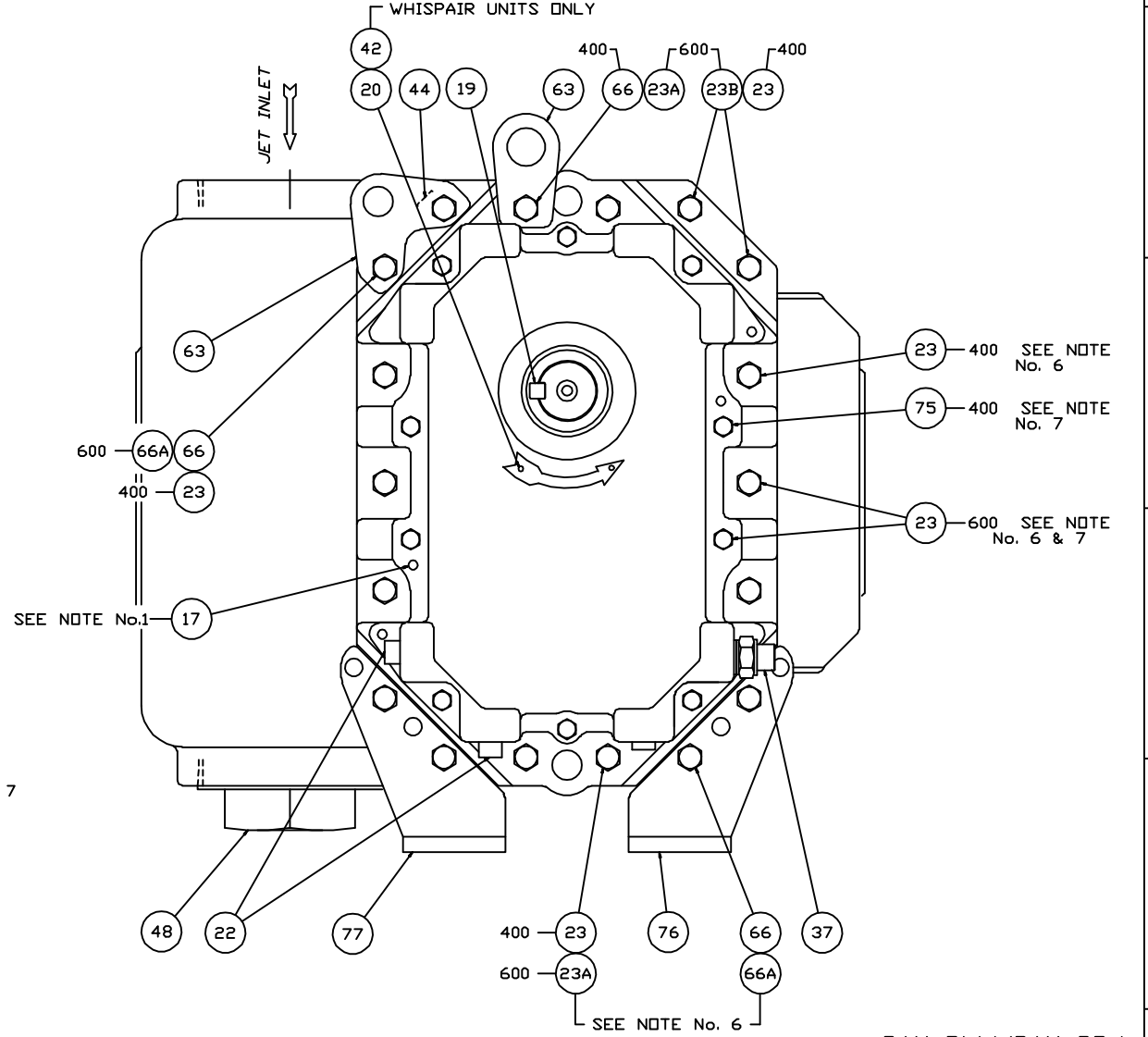
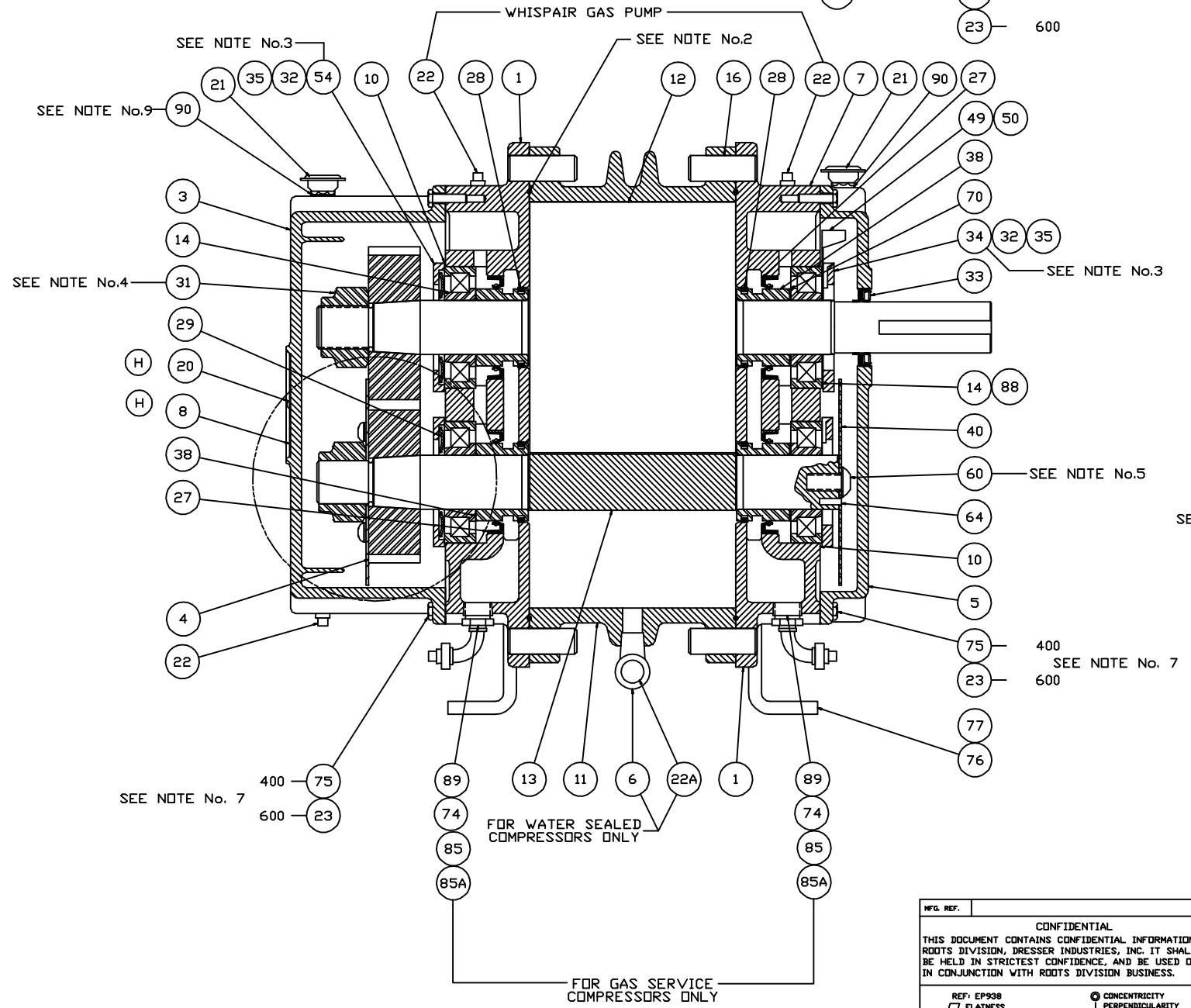
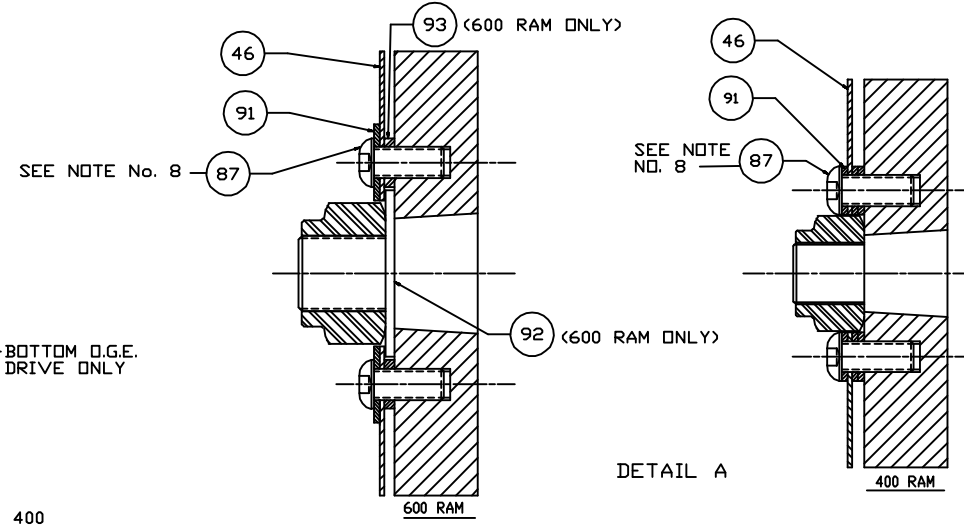
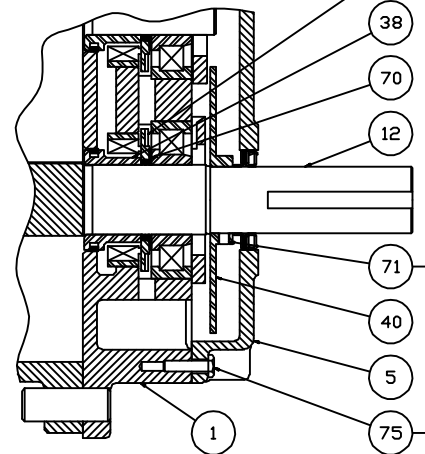


NOTES:

1. DRIVE END COVER TO BE PINNED TO HEADPLATE AFTER ALIGNING SEAL BORE WITH SHAFT WITHIN .001
 2. USE LOCKTITE #2 (30515) ON ALL PIPE THREADS & CYLINDER TO HEADPLATE FLANGE FOR WHISPAIR GAS PUMP UNITS ONLY.
 3. ITEMS 34 & 54 MUST BE INSTALLED WITH OIL GROOVE AT TOP.
 4. TORQUE TO 400 FT.LBS.-400
TORQUE TO 630 FT.LBS.-600
 5. TORQUE TO 75 FT.LBS.-400
TORQUE TO 140 FT.LBS.-600
- APPLY LOCKTITE TO SCREW THREADS & BOTH FACES OF WASHER & SLINGER.
6. TORQUE TO 35 FT.LBS. (HEADPLATE)
 7. TORQUE TO 10 FT.LBS. (GARBBOX/END COVER)
 8. LOCKTIGHT AND TORQUE TO FT.LBS.-85
 9. TWO 1/2 X 3/4 BUSHINGS FOR BREATHERS ON 600 RAM

BOTTOM DRIVE OPTION
ALSO SHOWN AS GAS SERVICE



No. REQ'D	PART NAME	PART No. PART No.	MAT'L
-----------	-----------	-------------------	-------

RAM-DVJ/RAM-DPJ

REV.	DATE	BY	CHKD.	APP.	REVISIONS
H	08/19/02	T131	RK	AGP	ADDED # 8 & 20
G	08/24/01	T81	RK	AGP	ADDED ITEMS 91,92,93&DETAIL A
F	08/05/00	T22	RK	AGP	ADDED #88
E	11/17/00	T16	RK	AGP	ADDED ELBOW & COUPLING
D	9/14/99	6400V	BMS	AGP	ADDED BOLT TO G.E. SLINGER
C	4/12/99	5767V	BMS	AGP	REVISED FOR 600 RAM
B	9/16/97	5560V	RDA		REV. FOOT TO NEW STYLE DESIGNED FOR HORIZONTAL MOUNTING
A	12/5/96	5048V	BMS	RDA	REVISED NOTE

MFG. REF. CONFIDENTIAL THIS DOCUMENT CONTAINS CONFIDENTIAL INFORMATION OF ROOTS DIVISION, DRESSER INDUSTRIES, INC. IT SHALL BE HELD IN STRICTEST CONFIDENCE, AND BE USED ONLY IN CONJUNCTION WITH ROOTS DIVISION BUSINESS.	REF: EP938 □ FLATNESS ⊥ PERPENDICULARITY ∠ ANGULARITY // PARALLELISM TRUE POSITION ∅ DIAMETER — STRAIGHTNESS	⊙ CONCENTRICITY ⌒ PROFILE OF LINE ⌒ PROFILE OF A SURFACE ∅ DIAMETER √ FINISH IN MICRO INCHES	DO NOT SCALE FOR DIMENSIONS ALL DIMENSIONS SHOWN IN BRACKETS () ARE MILLIMETERS ORDER No. 56-1010 SECTIONAL ASSEMBLY 400/600 RAM DRESSER ROOTS ROOTS DIVISION DRESSER EQUIPMENT GROUP 2135 HWY 6 SOUTH HOUSTON, TX, IN USA DIMENSIONAL TOLERANCES UNLESS OTHERWISE SPECIFIED FRACTIONS—1/16" DECIMALS—0.001" THREE PLACE DECIMALS—0.0005" 81883023 REV H
--	--	--	--

**RAM, RAM-J Series Parts List -4" and 6"
Gear Diameter** (Refer to drawing #81881023)

Item #	Part Name	Qty.
1	Headplate	2
3	Gearbox	1
4	Timing Gears	2
5	End Cover	1
7	Gasket – Gearbox/Cover	2
10	Shims	Lot
11	Cylinder	1
12	Impeller & Shaft Drive	1
13	Impeller & Shaft Driven	1
14	Bearing Roller	4
16	Pin, Dowel (Pull Out)	4
17	Pin, Dowel	2
19	Key Square	1
21	Breather	2
22	Plug, Pipe	12
23	Screw, Cap Hex Hd.	**
27	Seal, lip headplate	4
28	Piston, Ring-Seal	4
29	Washer, Wavy Spring	2
31	Gear Nut	2
32	Scr, Cap Hex Hd.	16
33	Seal, Lip Drive	1
34	Brg. Clamp Plate - D. E.	2
35	Lock Washer - Spring	16
37	Sight Plug - Oil Level	2
38	Sleeve, Shaft	4
40	Slinger - D.E. (Top Drive)	1
46	Slinger - G.E.	1
49	Oil Leader L/S	1
50	Oil, Leader-R/S	1
54	Brg Clamp Plate - G. E.	2
60	Screw, Cap Butt. HD.	1
64	Pin, Spring	1
66	Screw, Cap Hex HD.	**
66.1	WHISPAIR, Spring Lock 3/8M	**
70	Shims D.E. Brg.	1
75	Screw, Cap - Hex HD.	**
76	Blower Foot - RH	2
77	Blower Foot - LH	2
85	Elb, Pipe-Black	2
85.1	Plug, Pipe	2
87	Scr, Cap BH	2
88	Anti Rotation Ball	4
90	BSHG-RDCG	2
91	Washer, Plain Flat	2
92	Washer, Plain Flat	2
93	Washer	2
94	Oil Leader	2
95	Cap Screw	4

** Quantity varies by blower

**RAM series parts list 4" & 6" gear diameter for
Gas, DVJ, DPJ & JV**

(Refer to drawing #81881023)

Item Number	Part Name	Quantity
1	Headplate	2
2	Spray nozzle assembly	1
3	Gearbox	1
4	Timing Gears	2
5	End Cover	1
7	Gasket – Gearbox/Cover	2
10	Shims	Lot
11	Cylinder	1
12	Impeller & Shaft Drive	1
13	Impeller & Shaft Driven	1
14	Bearing Roller	4
16	Pin, Dowel (Pull Out)	4
17	Pin, Dowel	2
19	Key Square	1
21	Plug - Vent	2
22	Plug, Pipe	12
23	Screw, Cap Hex Hd.	**
27	Seal, Lip Headplate DVJ, DPJ, JV	4
27	Seal-Mech-Viton Gas	4
28	Piston, Ring-Seal	4
29	Washer, Wavy Spring	2
31	Gear Nut	2
32	Scr, Cap Hex Hd.	16
33	Seal, Lip Drive	1
34	Brg. Clamp Plate - D. E.	2
35	Lock Washer - Spring	16
37	Oil Level Gauge	2
38	Sleeve, Shaft DVJ, DPJ, JV	4
38	Sleeve - Gas	4
40	Slinger - D.E. (Top Drive)	1
46	Slinger - G.E.	1
49	Oil Leader L/S	1
50	Oil, Leader-R/S	1
54	Brg Clamp Plate - G. E.	2
60	Screw, Cap Butt. HD.	1
64	Pin, Spring	1
66	Screw, Cap Hex HD.	**
66.1	Whispair, Spring Lock 3/8M	**
70	Shims D.E. Brg.	1
75	Screw, Cap - Hex HD.	**
76	Blower Foot - RH	2
77	Blower Foot - LH	2
85	Elb, Pipe-Black	2
85.1	Plug, Pipe	2
87	Scr, Cap BH	2
88	Anti Rotation Ball	4
90	BSHG-RDCG	2
91	Washer, Plain Flat	2
92	Washer, Plain Flat	2
93	Washer	2
94	Oil Leader	2
95	Cap Screw	4

**Quantities vary by blower.