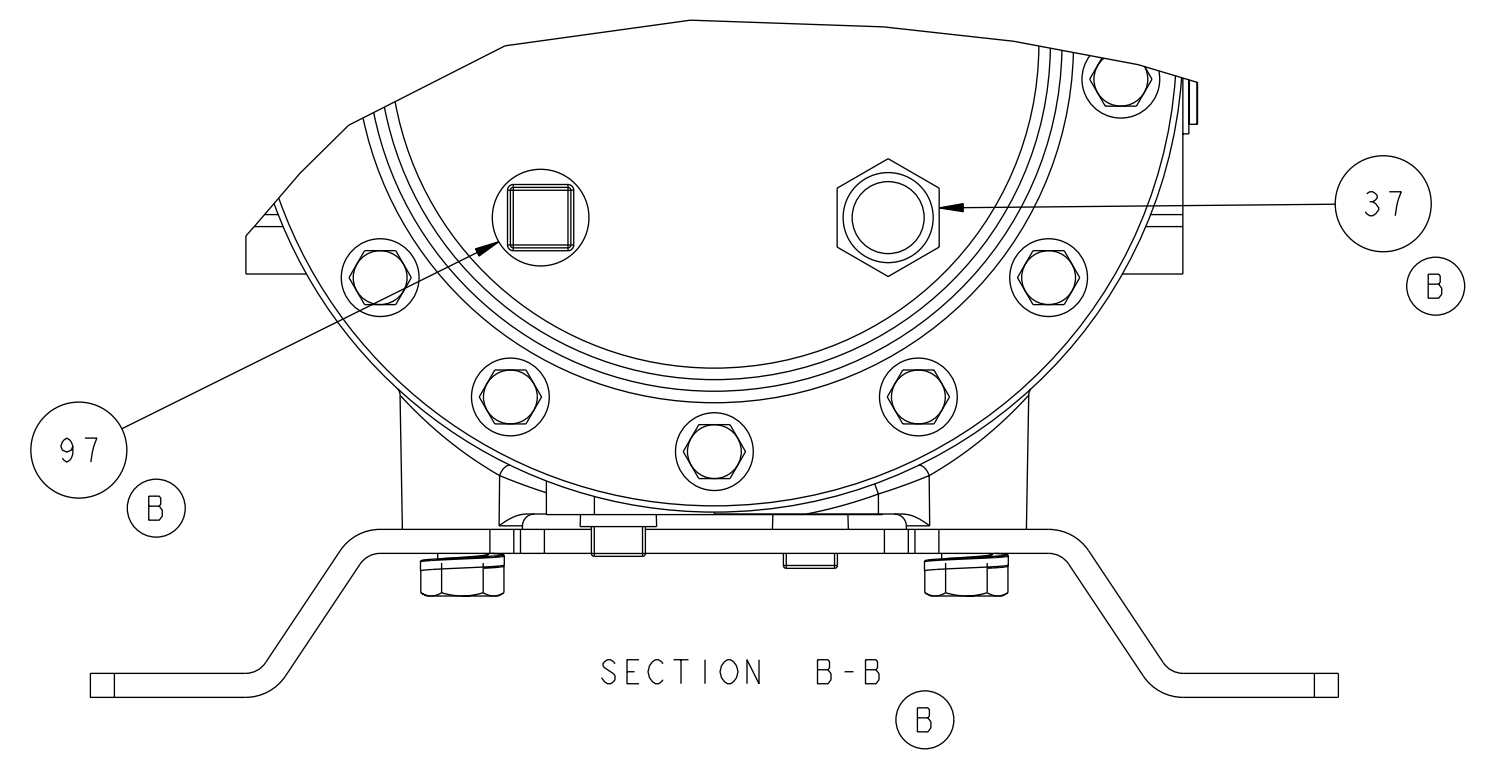
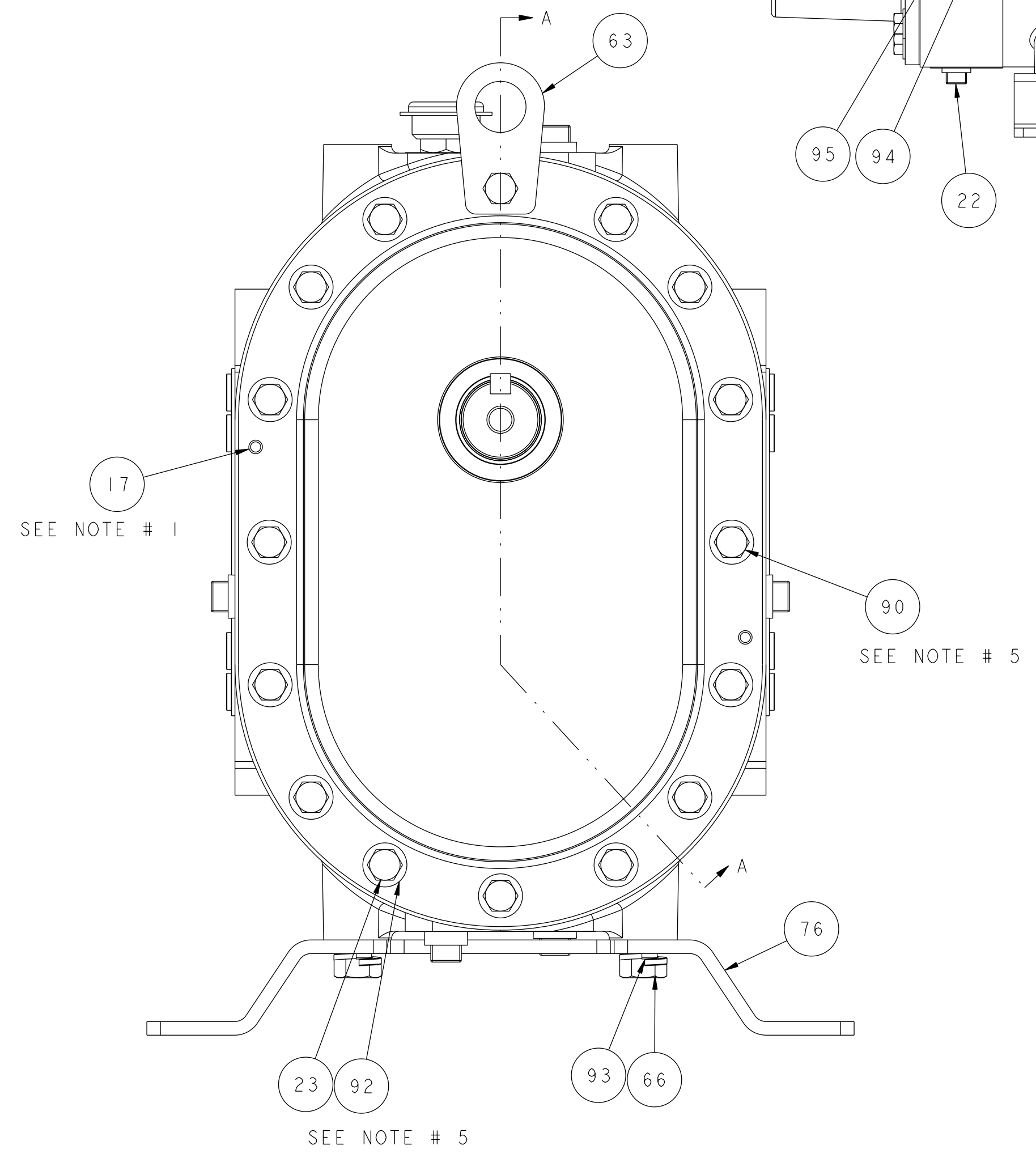
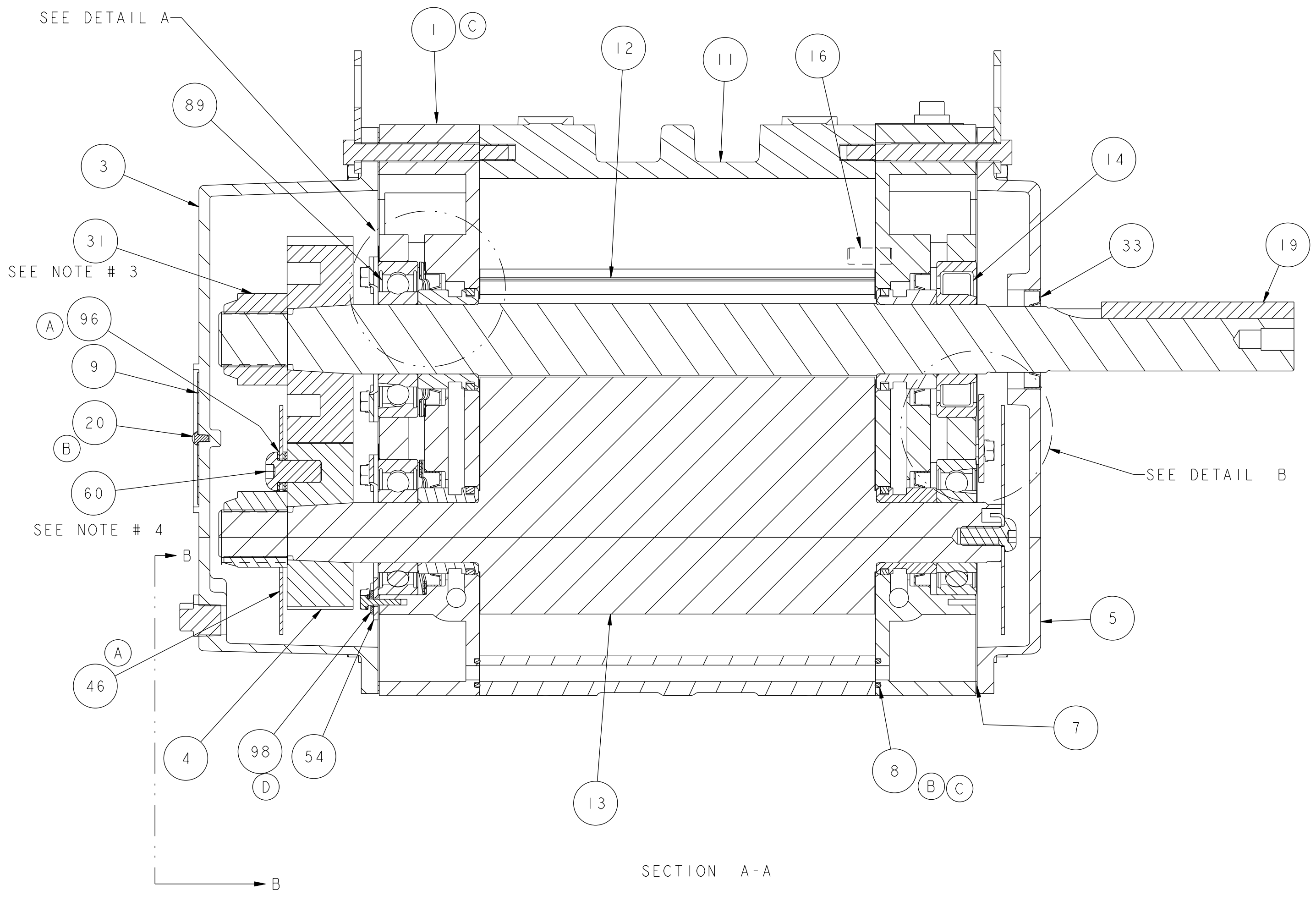
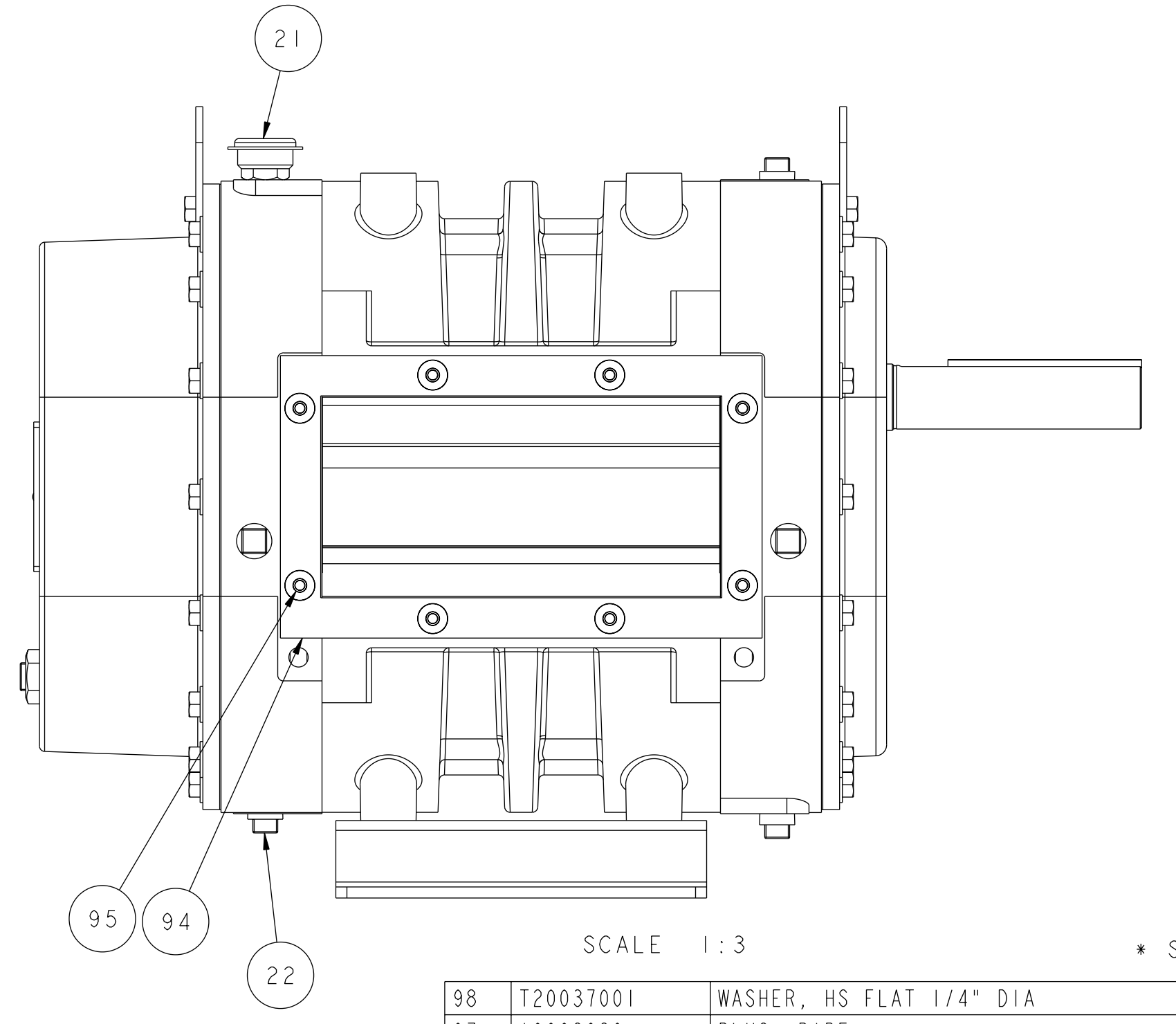
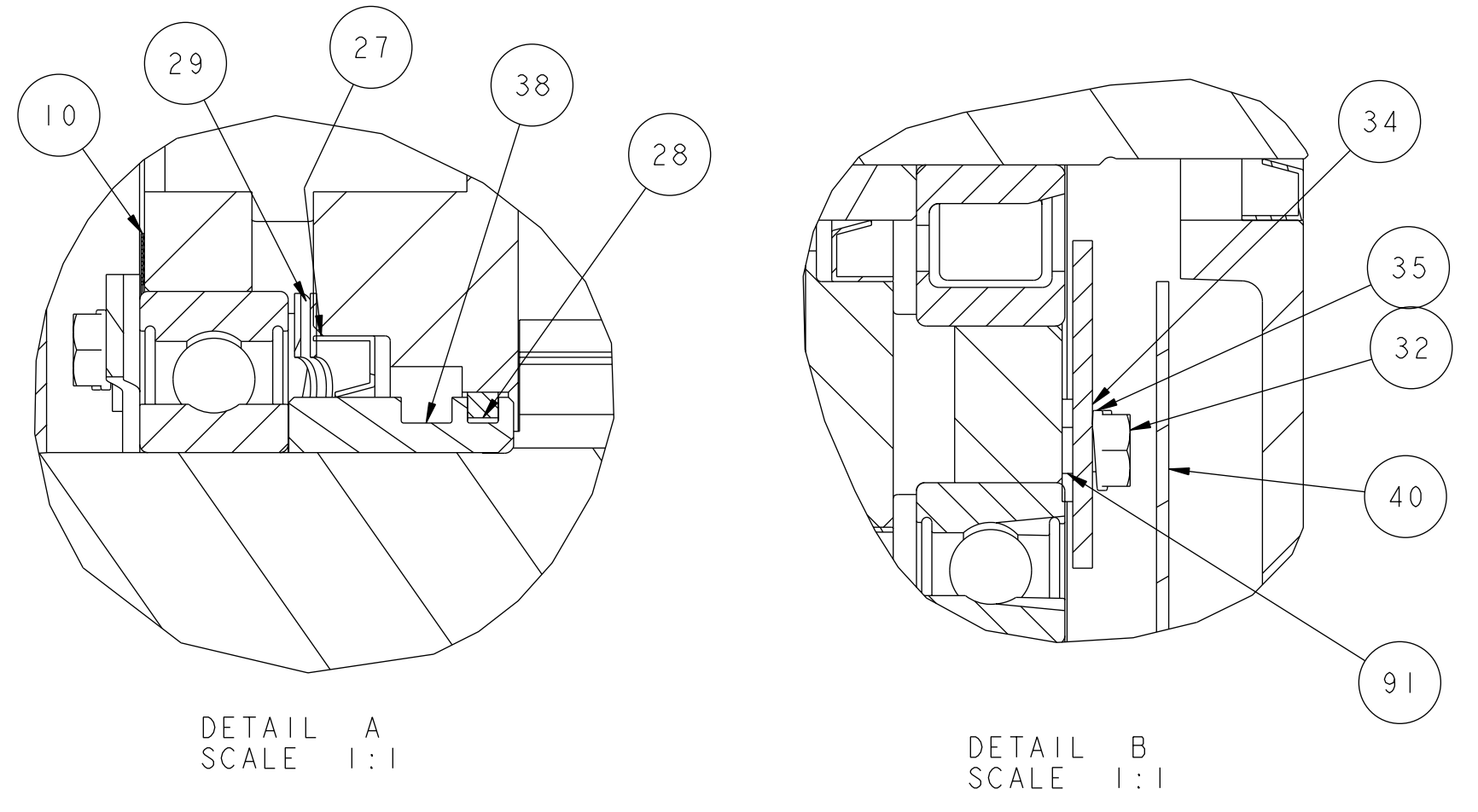


NOTES:  
 1. DRIVE END COVER TO BE PINNED TO HEADPLATE AFTER ALIGNING SEAL BORE WITH SHAFT WITHIN .001  
 2. USE TEFLON SEALANT ON ALL PIPE THREADS  
 3. TORQUE TO 400 FT.LBS  
 4. APPLY LOCKTITE TO SCREW THREAD AND TORQUE TO 75 FT.LBS  
 5. TORQUE TO 35 FT.LBS



\* SEE BOM

ITEM	PART NO.	DESCRIPTION	QTY.
98	T20037001	WASHER, HS FLAT 1/4" DIA	8
97	I0008029	PLUG, PIPE	1
96	T20031001	BUSHING, STEEL	6
95	T20015001	PLUG, CAP	*
94	SEE BOM	GASKET, INLET/OUTLET	2
93	I0049005	WASHER, LOCK 1/2" DIA	4
92	I0181015	WASHER, FLAT 3/8	30
91	I0181014	WASHER, FLAT 1/4" DIA	2
90	I0019005	SCREW, HEX HD CAP 3/8"-16 X 1" LG	4
89	T20004001	BEARING, DEEP GROOVE BALL	3
76	SEE BOM	FOOT, BLOWER	*
66	I0023003	SCREW, CAP HEX HD 1/2"-13 X 1-1/4" LG	4
63	64361020	LUG, LIFTING	2
60	I2800001	CAP SCREW, BUTTON HD 1/2" DIA X 1" LG	3
54	T30019021	PLATE, BEARING CLAMP	2
46	T20029001	SLINGER, OIL G.E	1
40	54710020	SLINGER, OIL D.E	1
38	T30018021	SLEEVE G.E & D.E	4
37	I2066001	PLUG, SIGHT	1
35	I0049002	WASHER, LOCK 1/4" DIA.	10
34	T30074020	PLATE, BEARING CLAMP D.E	1
33	I0460034	SEAL, VITON	1
32	I0011003	CAP SCREW, 1/4"-20 X 3/4" LG	10
31	I0319019	NUT, LOCK	2
29	I0135023	WASHER, WAVY	4
28	I2283001	RING, PISTON	4
27	I0460030	SEAL, VITON	4
23	I0019020	SCREW, HEX HD CAP 3/8"-16 X 3-1/2" LG	28
22	I0008004	PLUG, PIPE	7
21	T20013004	PLUG, VENT	1
20	I0815002	SCR, SELF TAPPING	1
19	SEE BOM	KEY, SQUARE	1
17	I2917013	PIN, DOWEL .250 DIA X 1.00 LG	2
16	I1175004	PIN, DOWEL .375 DIA X 1.00 LG	8
14	I0222042	BEARING, ROLLER	1
13	SEE BOM	IMPELLER & SHAFT, DRIVEN	1
12	SEE BOM	IMPELLER & SHAFT, DRIVE	1
11	SEE BOM	CYLINDER	2
10	52378020	SHIM, SET	A/R
9	T20034001	NAMEPLATE, SERIAL NO.	1
8	T20003002	O-RING	8
7	T20017001	GASKET	2
5	T30017022	COVER, DRIVE END	1
4	52466021	GEAR, ASSY	1
3	T30016022	GEAR BOX	1
1	T30156023	HEAD PLATE	2

REV. NO.	DATE	BY	CHKD.	APPD.	DESCRIPTION
D	8/02/01	PROTO			ADDED ITEM# 98
C	7/09/01	PROTO			ITEM #1 WAS T30015023, ITEM #8 WAS T20036001
B	5/04/01	PROTO			ADDED ITEM# 97820, ITEM# 8 WAS T20003001, ITEM# 37 WAS I2066003, ADDED SECTION B-B
A	4/6/01	PROTO			ADDED ITEM #96, ITEM #46 WAS 62702021

PERPENDICULARITY	TRUE POSITION	CONCENTRICITY	STRAIGHTNESS	PROFILE OF LINE	MAX. MATERIAL CONDITION	FINISH IN MICRO INCHES	REGARDLESS OF FEATURE SIZE	INDICATING MACHINE LOCATING SURFACE
⊥	⊕	⊙	—	⊖	Ⓜ	Ⓢ	Ⓡ	Ⓡ

FORMER'S TOLERANCES	UNLESS SPECIFIED
DIM	±.01
XXX	±.005
X/X	±1/64
NO.	±30°

DATE	WEIGHT	SCALE	DRAWING NUMBER	REV.
12SEP00	280	1 OF 1	T30004023	D