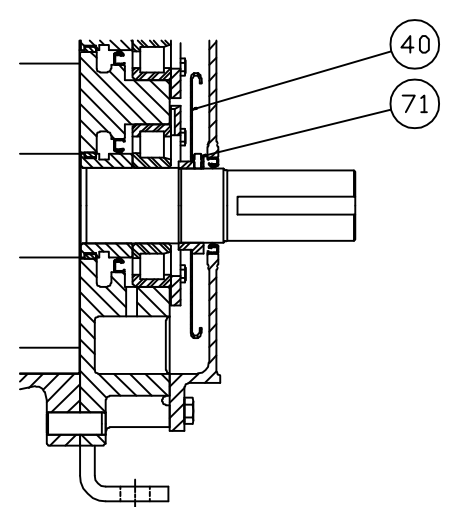
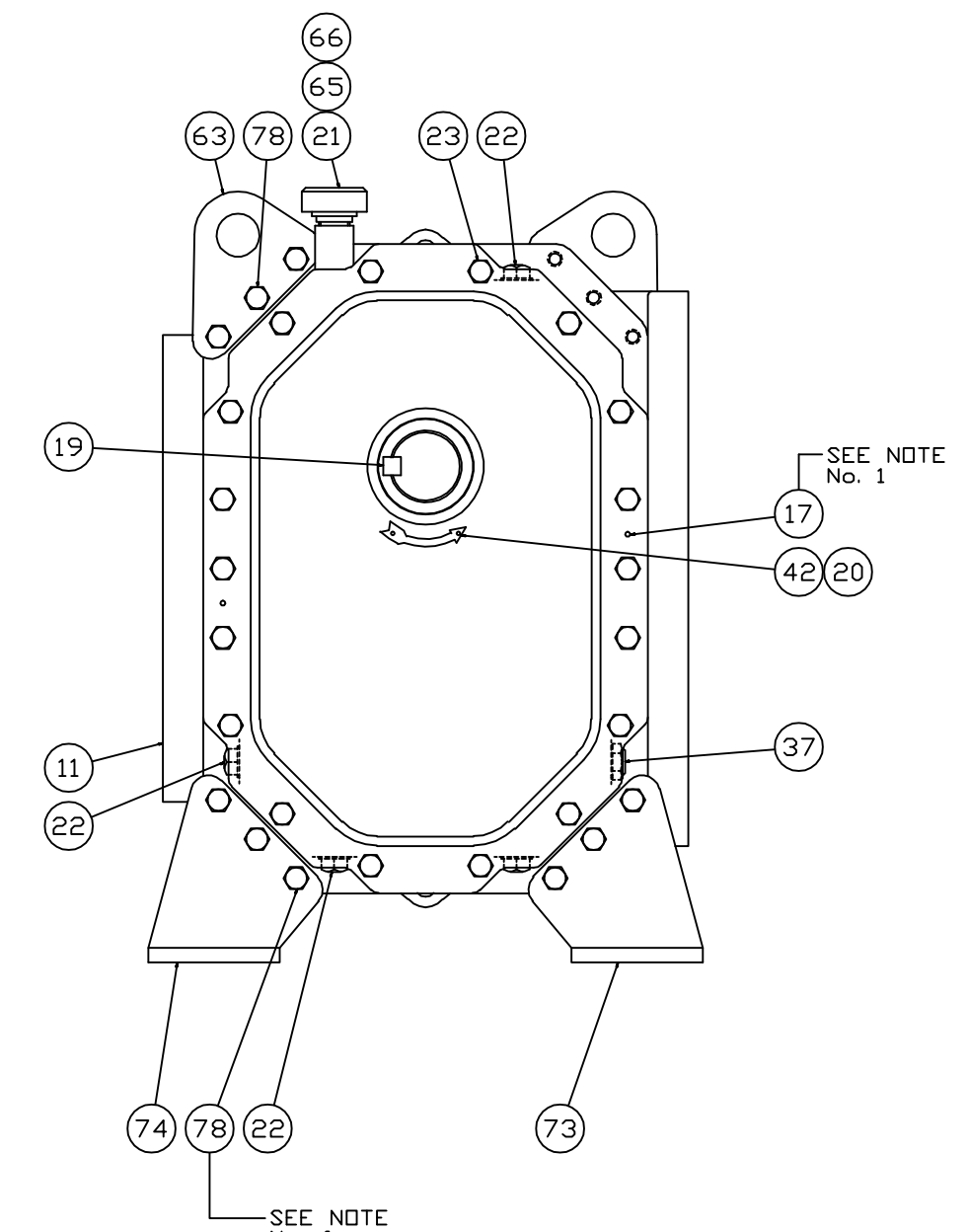
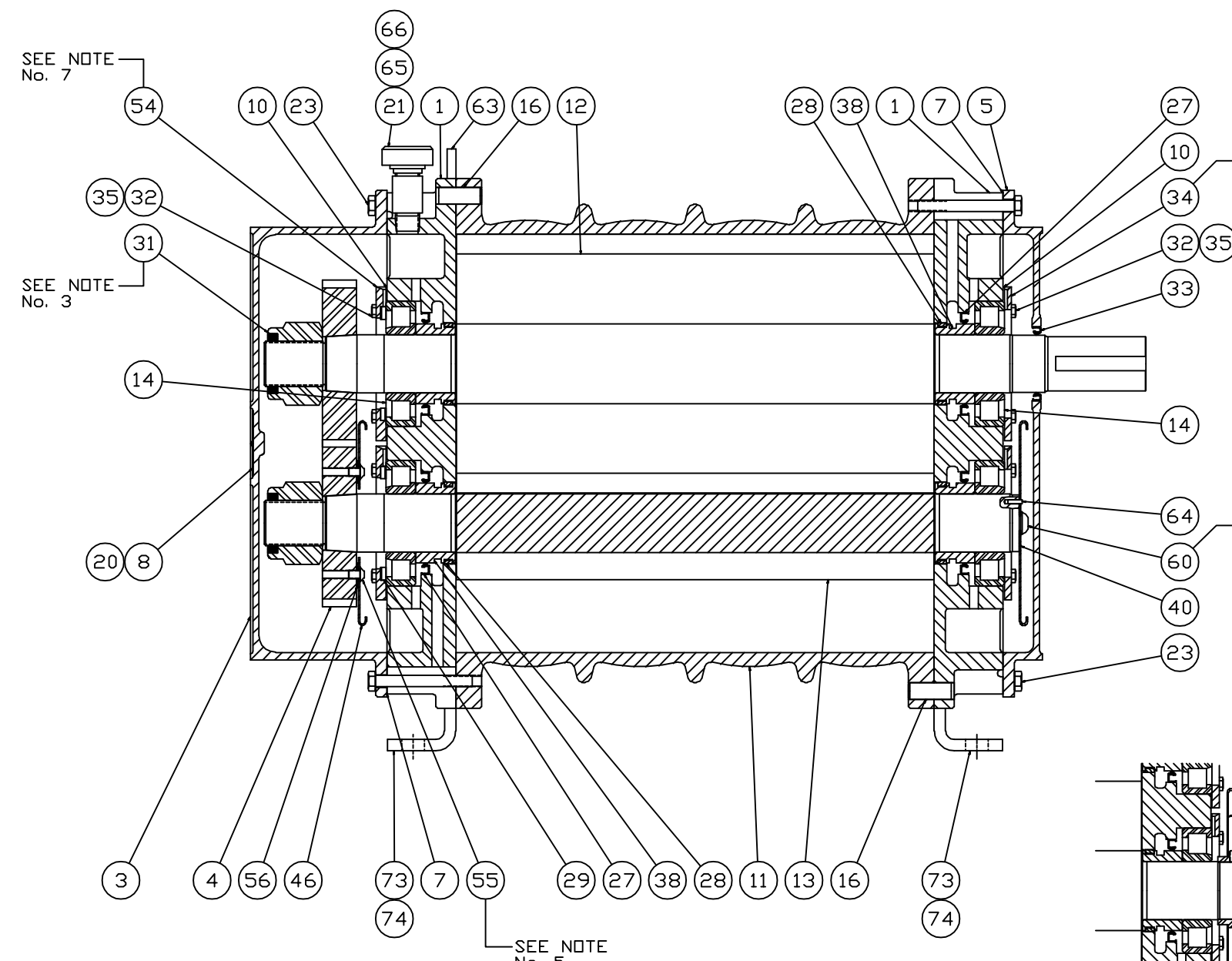


No. REQ'D	PART NAME	PART No. PART No.	MAT'L.
-----------	-----------	-------------------	--------



OPTIONAL BOTTOM DRIVE

- NOTES:
1. DRIVE END COVER TO BE PINNED TO HEADPLATE AFTER ALIGNING SEAL BORE TO SHAFT WITHIN .001"
 2. USE JOHN CRANE PLASTIC LEAD No. 2 ON ALL PIPE THREADS
 3. APPLY OIL TO NUT THREADS & NUT FACE AND TORQUE TO 1250 FT-LBS. (IF MOLYKOTE GN PASTE IS USED TORQUE TO 1000 FT-LBS.)
 4. APPLY LOCKTITE TO SCREW THREADS & TORQUE TO 140 FT-LBS.
 5. APPLY LOCKTITE TO SCREW THREADS & TORQUE TO 25 FT-LBS.
 6. APPLY OIL TO SCREW THREADS & TORQUE TO 85 FT-LBS.
 7. ITEMS 34 & 54 MUST BE INSTALLED WITH OIL GROOVE AT TOP.

REF: EP938		CONFIDENTIAL		DATE		DO NOT SCALE FOR DIMENSIONS		ORDER No.	
THIS DOCUMENT CONTAINS CONFIDENTIAL INFORMATION OF ROOTS DIVISION, DRESSER INDUSTRIES, INC. IT SHALL BE HELD IN STRICTEST CONFIDENCE, AND BE USED ONLY IN CONJUNCTION WITH ROOTS DIVISION BUSINESS.						ALL DIMENSIONS SHOWN IN BRACKETS () ARE MILLIMETERS		50-1256	
REF: EP938		CONCENTRICITY		DR.		SECTIONAL ASSEMBLY		ROOTS DIVISION	
□ FLATNESS		⊥ PERPENDICULARITY		CHKD. FR 1/4/91		700 RCS-J		DRESSER EQUIPMENT GROUP	
/ ANGULARITY		~ PROFILE OF LINE		APP. DB 1/30/91		DRESSER		A HALLIBURTON COMPANY	
// PARALLELISM		△ PROFILE OF A SURFACE		REV RDA 1/31/91		ROOTS		HOUSTON, TX USA	
+ TRUE POSITION		⊙ DIAMETER		SCALE		/PARTS1/XASR		72015023	
- STRAIGHTNESS		√ FINISH IN MICRO INCHES		A REVISED PER ECN		RE 2/3/93 3698-V		REV	
				A REVISED OIL SLINGER		RE 5/2/91		4"=1'-0"	
				REVISIONS		BY DATE CHANGE NOTICE			
						CHKD. APP			

700 Series RCS-J Parts

Item #	Part Name	Qty.
01	Headplate	2
03	Gearbox	1
04	Gear, Assembly	1
05	Drive End Cover	1
07	Gasket	2
09	Lubrication Label	2
10	Shim Set	1
11	Cylinder	1
12	Impeller & Shaft - Drive	1
13	Impeller & Shaft - Driven	1
14	Bearing Roller	4
16	Dowel Pin	4
17	Drive-Lok Pin	2
19	Key	1
20	Drive Screw	3
21	Plug - Vent	2
22	Drain - filler Plug	8
23	Cap Screw	36 (700)
27	Seal-Lip, Headplate	4
28	Seal-Ring	4
29	Washer, Wavy Spring	2
31	Locknuts	2
32	Capscrew	16
33	Seal, Lip	1
34	Clamp Plate - Drive End	2
35	Lock Washer	16
37	Oil Level Gauge	2
38	Sleeve - Piston Ring	4
40	Slinger - D.E (Top Drive)	1
40	Slinger - D.E. (Bottom Drive)	2
45	Pipe Plug	2
46	Slinger - G.E.	1
54	Clamp Plate - Gear End	2
55	Capscrew-butt. Hd	2
56	Washer	2
60	Capscrew	1
63	Lifting Lug	2
64	Pin, Spr (Top Drive)	1
65	Coupling	2
66	Nipple-pipe (700)	2
71	Scr, Set Soch CP (Bottom Drive)	1
73	Foot - R.H.	2
74	Foot - L.H.	2
78	Capscrew - Hex Hd.	2