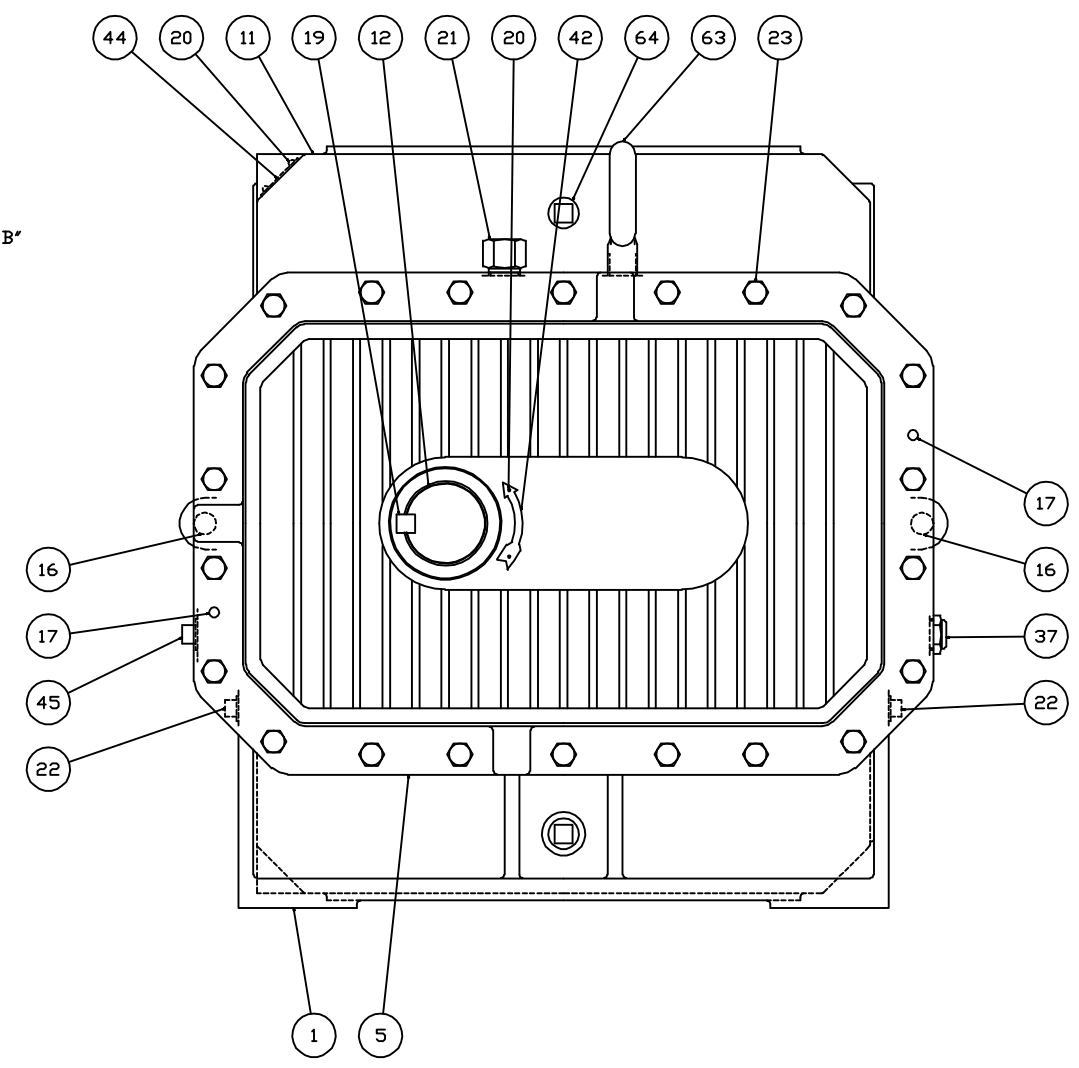
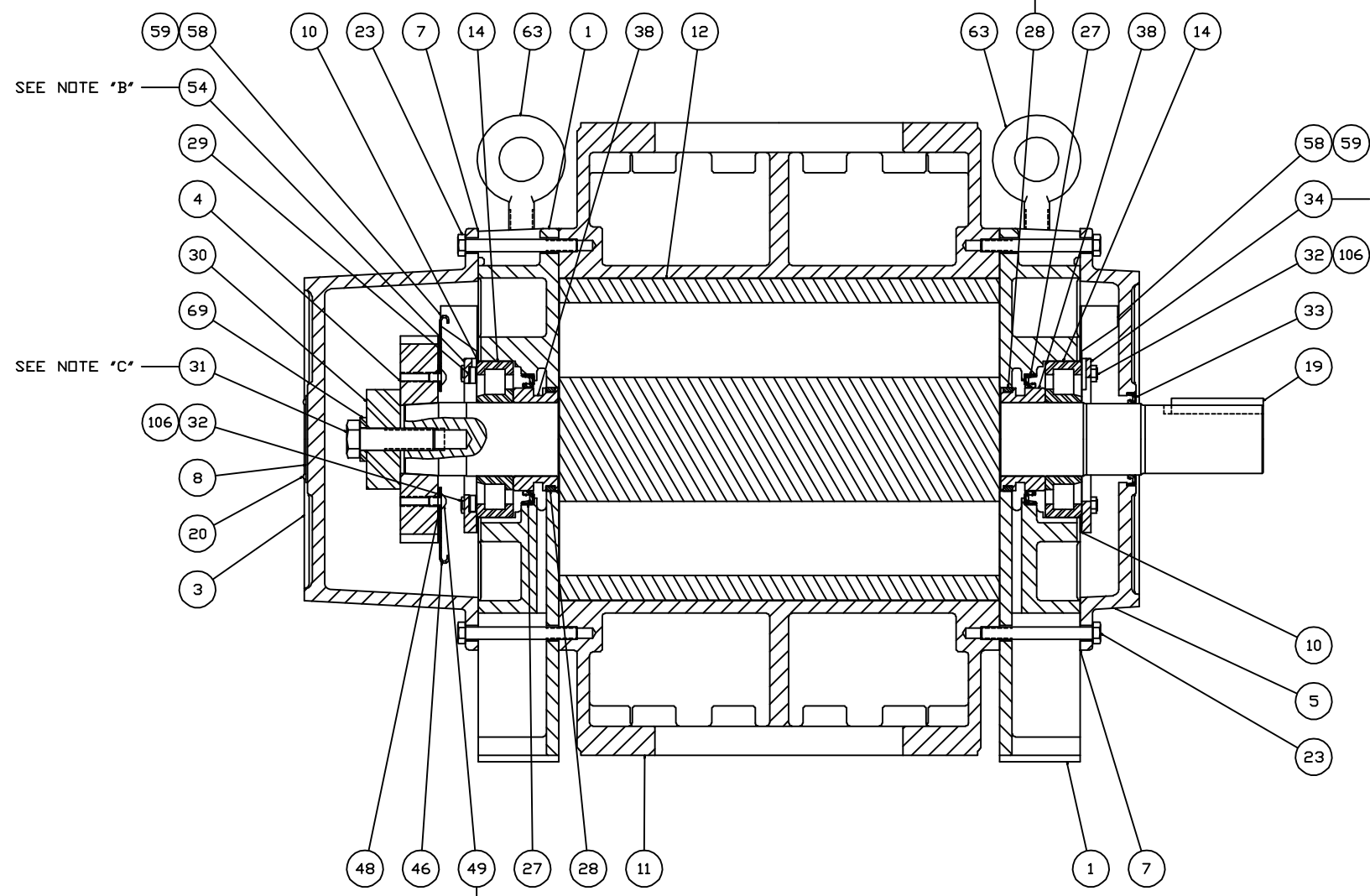
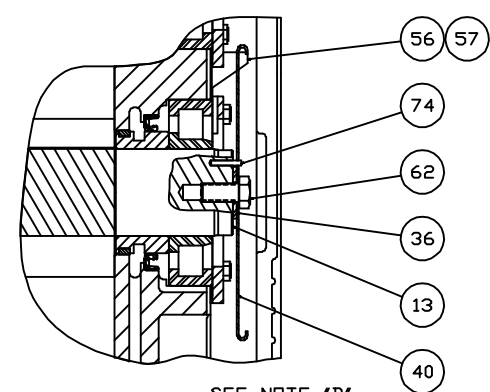


No. REQ'D	PART NAME	PART No. PART No.	MAT'L.



- NOTES:
- A - USE JOHN CRANE PLASTIC LEADS No. 2 ON ALL PIPE THREADS.
 - B - ITEMS 34 & 54 MUST BE INSTALLED WITH OIL GROOVE AT TOP.
 - C - APPLY OIL TO BOLT THREADS & UNDER BOLT HEAD, & TORQUE TO 650 FT. LBS. (IF MOLYKOTE GN PASTE IS USED IN PLACE OF OIL ON THREADS, TORQUE TO 500 FT. LBS.)
 - D - ITEM 28 TO BE INSTALLED WITH GAP TOWARD INLET FOR PRESSURE BLOWER OR TOWARD DISCHARGE FOR VACUUM BLOWER.
 - E - SCREW THREADS TO BE OILED & TORQUED TO 25 FT. LBS.

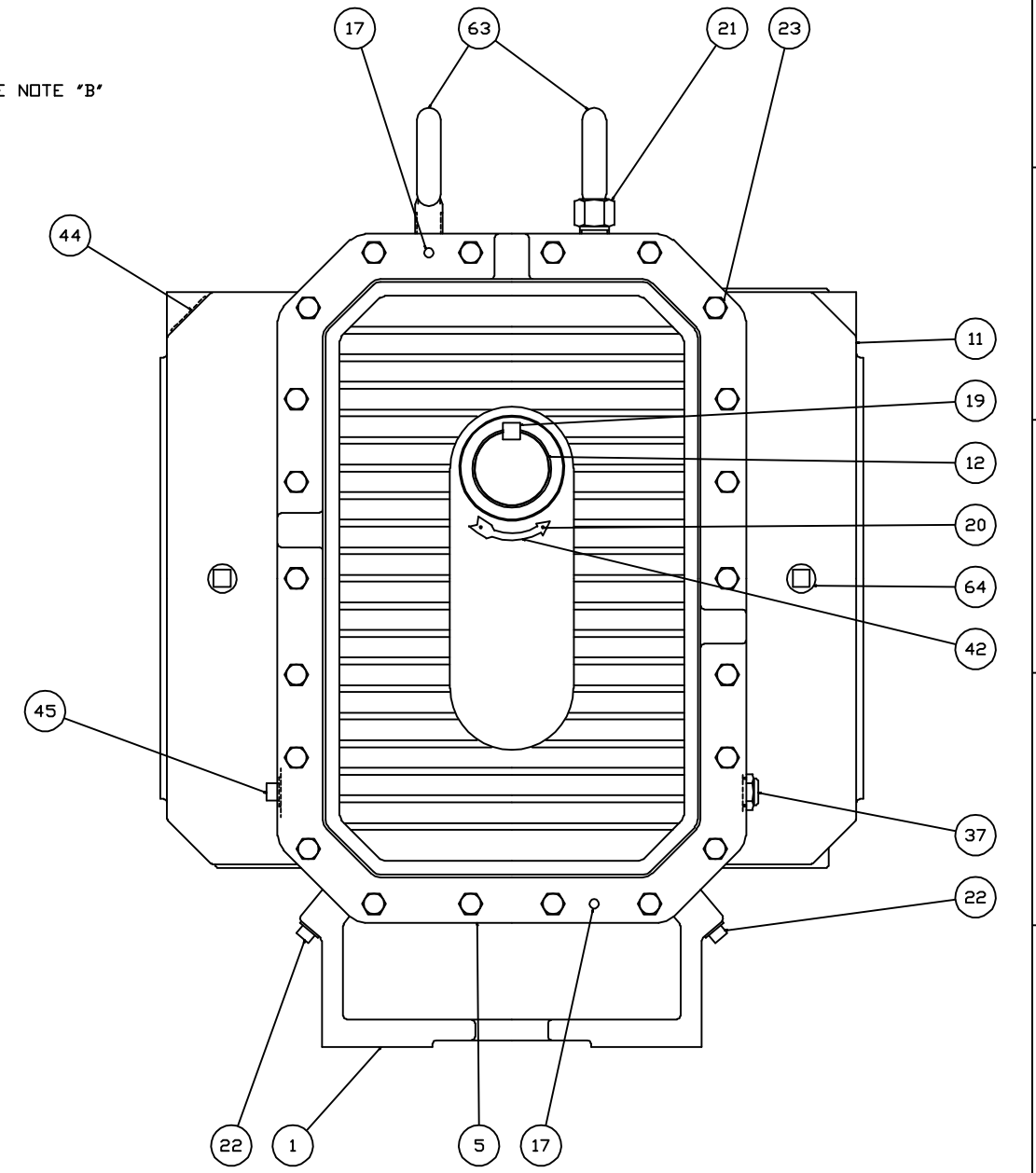
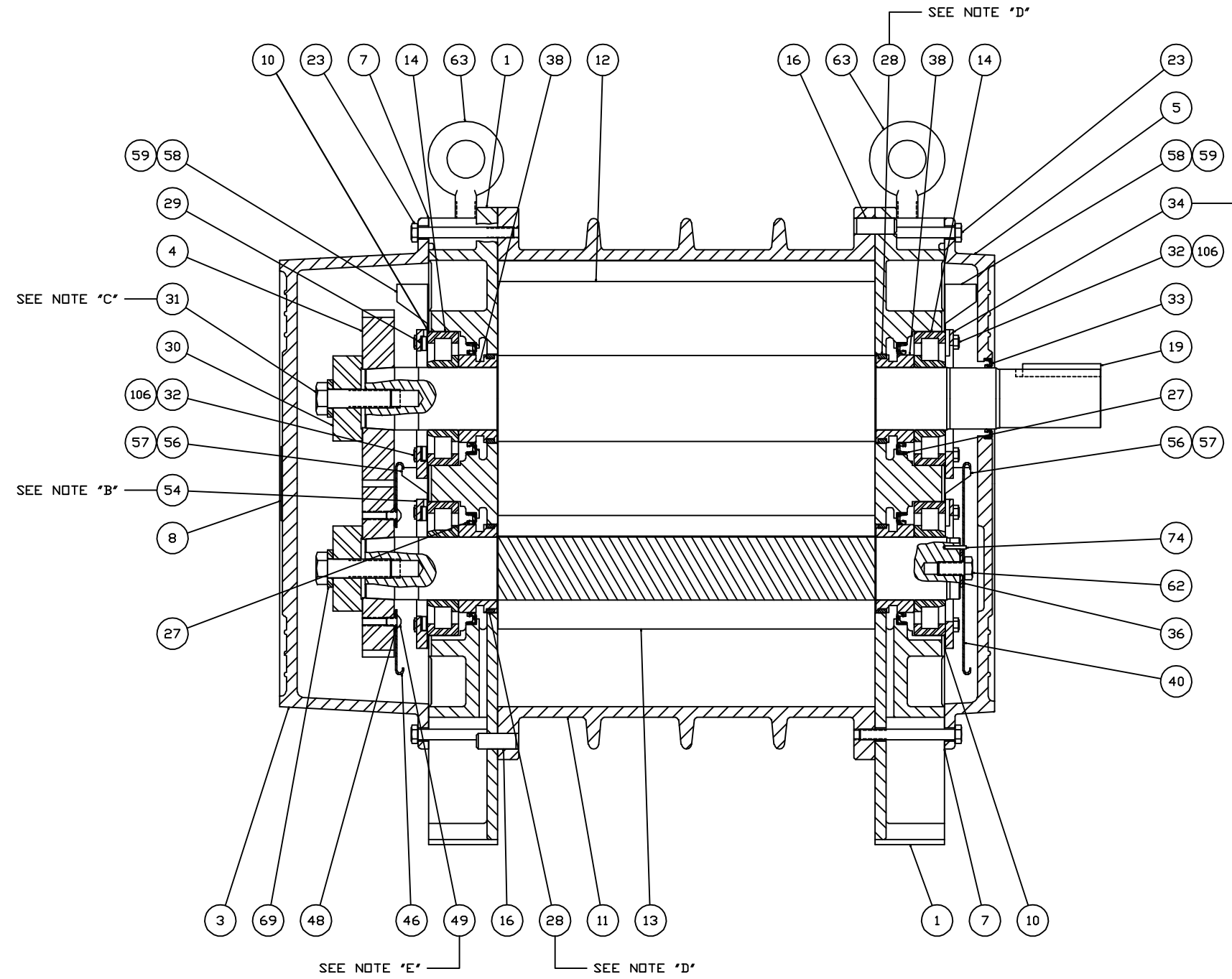
MFG. REF. 874-769-023 & 858-758-024		DATE 4/21/93		DO NOT SCALE FOR DIMENSIONS		ORDER No. 3792-B	
CONFIDENTIAL				ALL DIMENSIONS SHOWN IN BRACKETS () ARE MILLIMETERS			
THIS DOCUMENT CONTAINS CONFIDENTIAL INFORMATION OF ROOTS DIVISION, DRESSER INDUSTRIES, INC. IT SHALL BE HELD IN STRICTEST CONFIDENCE, AND BE USED ONLY IN CONJUNCTION WITH ROOTS DIVISION BUSINESS.				SECTIONAL ASSEMBLY			
				800 RCS-JH			
REF: EP938				DRESSER ROOTS			
<input type="checkbox"/> FLATNESS <input type="checkbox"/> ANGULARITY <input type="checkbox"/> PARALLELISM <input type="checkbox"/> TRUE POSITION <input type="checkbox"/> STRAIGHTNESS				<input type="checkbox"/> PERPENDICULARITY <input type="checkbox"/> PROFILE OF LINE <input type="checkbox"/> DIAMETER <input type="checkbox"/> FINISH IN MICRO INCHES			
B INCREASED TORQUE FROM 450 TO 500		NEP 11/20/93 4403V		SCALE 4"=1'-0"			
A ADDED ITEM #106 PER ECN		REM 12-13-94 4110-V		CAD FILE / DIRECTORY			
REVISIONS		BY DATE CHANGE NOTICE		CHKD. APP. XASR			
				DIMENSIONAL TOLERANCES UNLESS OTHERWISE SPECIFIED			
				TWO PLACE DECIMALS UNLESS OTHERWISE SPECIFIED FRACTIONS—1/16"			
				THREE PLACE DECIMALS UNLESS OTHERWISE SPECIFIED			
				874-770-023			
				REV B			



8" RCS-J PARTS LIST

ITEM NO.	PART NAME	ITEM NO.	PART NAME
1	Headplate, Drive/Gear End	31	Screw, Hex Head
3	Gearbox	32	Screw, Hex Head
4	Gear Assembly	33	Hydro Seal
5	Cover	34	Plate, Bearing Clamp Drive
7	Gasket, Gearbox Cover	37	End
8	Nameplate, Serial #	38	Sight Plug
9	Installation Tag	40	Sleeve - DE & GE
10	Shim Set	42	Slinger, Drive End
11	Cylinder	44	Arrow Rotation
12	Impeller & Shaft - Drive	45	Label
13	Impeller & Shaft - Driven	46	Plug, Pipe
14	Bearing Roller	48	Slinger, Gear End
16	Dowel Pin	49	Washer, Plain Flat
17	Spring Pin	54	Screw, Button Head
19	Key	56	Plate, Bearing Clamp Gear
20	Screw, Self-Tapping	57	End
21	Plug, Vent	58	Oil, Leader L/S
22	Pipe Plug	59	Oil, Leader R/S
23	Screw, Hex Head	62	Oil, Leader R/S
27	Hydro Seal	63	Oil, Leader L/S
27.1	Hydro Seal	64	Screw, Socket Head
28	Piston Ring Seal	69	Lifting, Lug
29	Washer, Wavy Spring	74	Plug, Pipe
30	Washer, Gear	106	Washer
			Pin, Spring
			Washer, Spring Lock

No. REQ'D	PART NAME	PATT. No. PART No.	MAT'L.

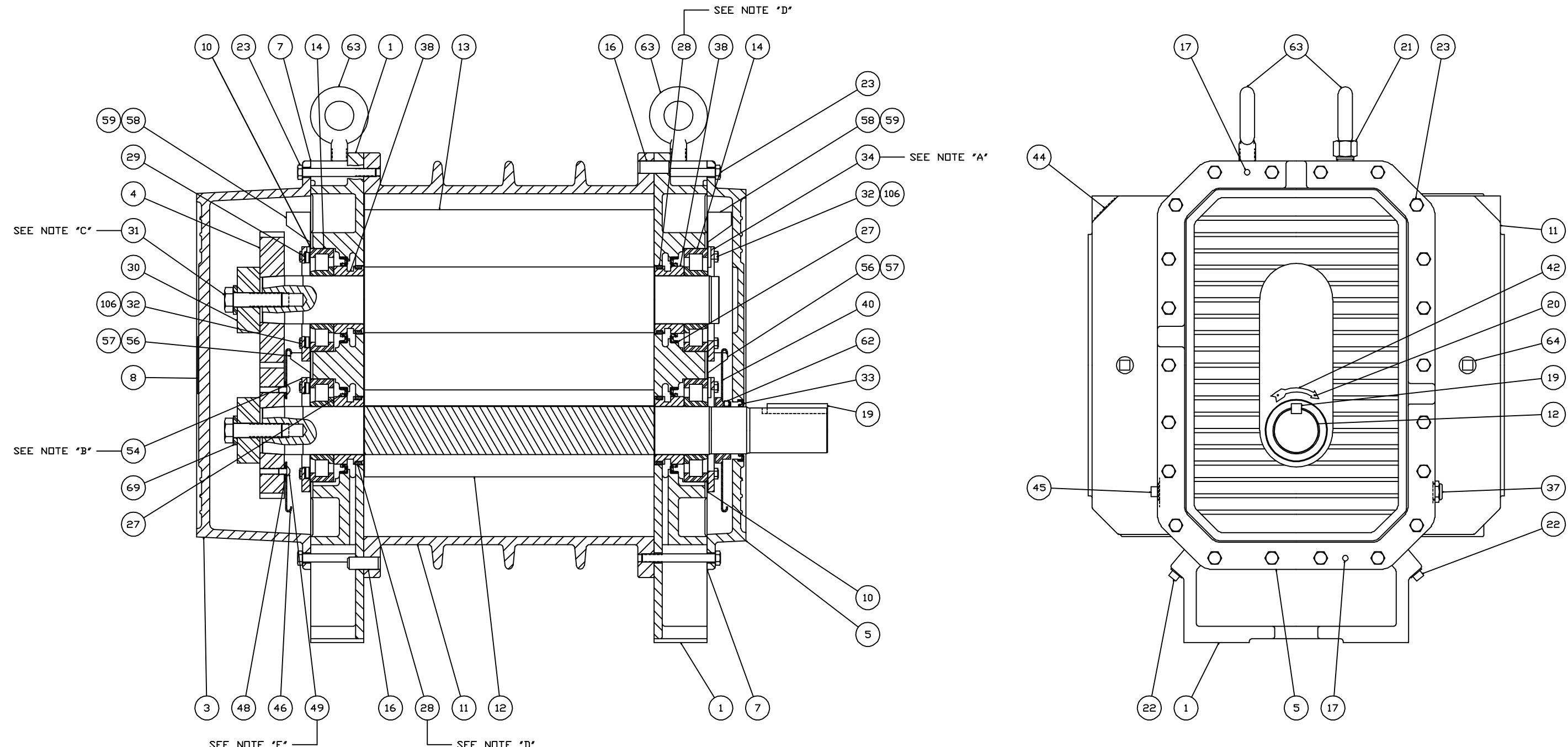


NOTES:

- A - USE JOHN CRANE PLASTIC LEADS No. 2 ON ALL PIPE THREADS.
- B - ITEMS 34 & 54 MUST BE INSTALLED WITH OIL GROOVE AT TOP.
- C - APPLY OIL TO BOLT THREADS & UNDER BOLT HEAD, & TORQUE TO 650 FT. LBS. (IF MOLYKOTE GN PASTE IS USED IN PLACE OF OIL ON THREADS, TORQUE TO 500 FT. LBS.)
- D - ITEM 28 TO BE INSTALLED WITH GAP TOWARD INLET FOR PRESSURE BLOWER OR TOWARD DISCHARGE FOR VACUUM BLOWER.
- E - SCREW THREADS TO BE OILED & TORQUED TO 25 FT. LBS.

MFG. REF. 858-757-024 & 867-734-013		DATE 4/2/93		DO NOT SCALE FOR DIMENSIONS ALL DIMENSIONS SHOWN IN BRACKETS () ARE MILLIMETERS		ORDER No. 3792-B	
CONFIDENTIAL THIS DOCUMENT CONTAINS CONFIDENTIAL INFORMATION OF ROOTS DIVISION, DRESSER INDUSTRIES, INC. IT SHALL BE HELD IN STRICTEST CONFIDENCE, AND BE USED ONLY IN CONJUNCTION WITH ROOTS DIVISION BUSINESS.				DR. RE 6/2/93		SECTIONAL ASSEMBLY 800 RCS-JV	
REF: EP938 □ FLATNESS ∠ ANGULARITY ∥ PARALLELISM ⊕ TRUE POSITION — STRAIGHTNESS				C ITEM #28 BALL ON DEL FOR NPL QTY CHG IN BOM B INCREASED TORQUE FROM 450 TO 500 A ADDED ITEM #106 PER ECN		RK 10/08/01 T70 RK RK SCALE 4"=1'-0" NEP 10/20/93 4403V REM 12-9 34 4110-V DB RDA 74769A23 CAB FILE / DIRECTORY	
REVISIONS				BY DATE CHANGE NOTICE		XASR	
DRESSER ROOTS				ROOTS DIVISION DRESSER EQUIPMENT GROUP A HALLIBURTON COMPANY CONNERSVILLE, IN USA		874-769-023 REV C	

No. REQ'D	PART NAME	PART No. PART No.	MAT'L



- NOTES:
- A - USE JOHN CRANE PLASTIC LEADS No. 2 ON ALL PIPE THREADS.
 - B - ITEMS 34 & 54 MUST BE INSTALLED WITH OIL GROOVE AT TOP.
 - C - APPLY OIL TO BOLT THREADS & UNDER BOLT HEAD, & TORQUE TO 650 FT. LBS. (IF MOLYKOTE GN PASTE IS USED IN PLACE OF OIL ON THREADS, TORQUE TO 500 FT. LBS.)
 - D - ITEM 28 TO BE INSTALLED WITH GAP TOWARD INLET FOR PRESSURE BLOWER OR TOWARD DISCHARGE FOR VACUUM BLOWER.
 - E - SCREW THREADS TO BE OILED & TORQUED TO 25 FT. LBS.

MFG. REF. 864-778-023 & 874-769-023		DATE 4/5/93		DO NOT SCALE FOR DIMENSIONS		ORDER No. 3792-B	
CONFIDENTIAL				ALL DIMENSIONS SHOWN IN BRACKETS () ARE MILLIMETERS			
THIS DOCUMENT CONTAINS CONFIDENTIAL INFORMATION OF ROOTS DIVISION, DRESSER INDUSTRIES, INC. IT SHALL BE HELD IN STRICTEST CONFIDENCE, AND BE USED ONLY IN CONJUNCTION WITH ROOTS DIVISION BUSINESS.							
REF: EP938	CONCENTRICITY	C ITEM #20 BALLON DEL FOR NPL (QTY CHG IN BOM)	RK	10/08/01	T70	RK	RK
□ FLATNESS	⊥ PERPENDICULARITY	B INCREASED TORQUE FROM 450 TO 500	NEP	10/20/93	4403V	DB	RDA
∠ ANGULARITY	△ PROFILE OF LINE	A ADDED ITEM #106 PER ECN	REM	12-13-94	4110-V	DB	RDA
// PARALLELISM	△ PROFILE OF A SURFACE	REVISIONS		BY	DATE	CHANGE NOTICE	CHKD. APP
⊕ TRUE POSITION	⌀ DIAMETER						XASR
↔ STRAIGHTNESS	√ FINISH IN MICRO INCHES						
DRESSER ROOTS		ROOTS DIVISION DRESSER EQUIPMENT GROUP CONNERSVILLE, IN USA		SCALE 4"=1'-0"		CAD FILE / DIRECTORY	
TOLERANCES UNLESS OTHERWISE SPECIFIED		TYPED DIMENSIONS		FRACTIONS--1/64		874-789-023	
TWO PLACE DECIMALS UNLESS OTHERWISE SPECIFIED		THREE PLACE DECIMALS UNLESS OTHERWISE SPECIFIED				REV C	