



TECHNO BUTTERFLY VALVES

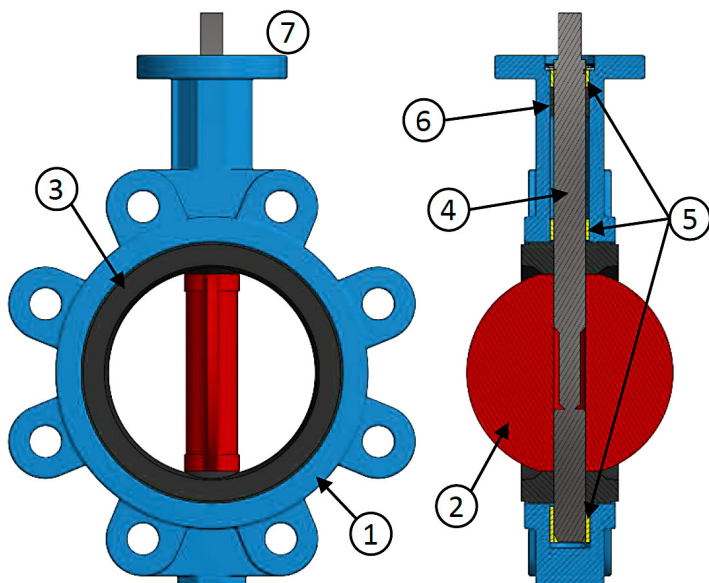
Features

- The Model BVL resilient seated butterfly valve is available in Buna-N, EPDM and Viton® configurations.
- A fully-lined elastomer seat provides complete isolation of the process media from the ductile iron valve body.
- All internal support hardware, including discs, braces and brackets are manufactured of corrosion-resistant stainless steel.
- 2" through 24" body sizes available in Class 150 ratings.
- Lug style body design includes ISO 5211 mounting pad for international standard manual and automated operators.
- Elastomer U-cup seal packing gland and PTFE shaft bushing provide for superior leak protection.
- All TECHNO Butterfly Valves are designed in accordance with API609 and tested to API598.

Model BVL™ Lug Body Butterfly Valve



Size	Body	Operator	Seat	Pressure Class
2" – 6"	Lug Style	Ten Position Lever Handle	Resilient	150
8" – 24"	Lug Style	Gear Operated Hand Wheel	Resilient	150



Parts Descriptions and Standard Materials of Construction

Item	Component	Material	Grade
1	Body	Ductile Iron	ASTM A395 Gr. 60-40-18
2	Disc	304 Stainless Steel	ASTM A351 Gr. CF8
3	Seat	EPDM	–
4	Stem	410 Stainless Steel	ASTM A276
5	Bushing	PTFE	–
6	U-cup Seal	EPDM	–
7	Operator (not shown)	Malleable Iron	Ten Position Lever Handle or Hand Wheel Design



TECHNO

BUTTERFLY VALVES

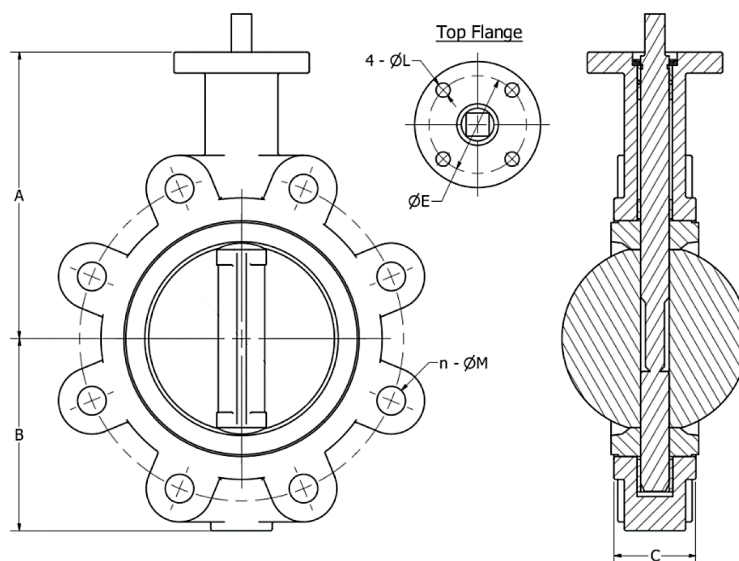
Model BVL™ Lug Body Butterfly Valve

How To Order

Order Example: For a 5" TECHNO Model BVL Lug Body Butterfly Valve, ASME Class 150, Ductile Iron Body with 304 Stainless Steel Disc, EPDM Seat, 410 Stainless Steel Stem with Pin, Lever Handle:

Size	Model	Body	Disc	Seat	Operator	Pressure Class	Body Type
5.0	BVL	DI	34	U	LO	A15	LG

SIZE
2" through 24"
MODEL
BVL
BODY MATERIAL
DI – Ductile Iron, ASTM A395 Gr. 60-40-18
DISC MATERIAL
34 – 304 Stainless Steel, ASTM A351 Gr. CF8M
NP – Nickel Plated Ductile Iron, ASTM 536
SEAT MATERIAL
B – Buna-N
U – EPDM
V – Viton®
OPERATOR
LO – Ten Position Lever Handle
GO – Gear Operated Hand Wheel
PRESSURE CLASS
A15 – ASME Class 150
BODY TYPE
LG – Threaded Lug Body



Size		A		B		C		E		L		n-M	
in	mm	in	mm	in	mm	in	mm	in	mm	in	mm	in	mm
2	50	5 ½	140	3 ⅛	80	1 11⁄16	43	2 ¾	70	7⁄16	10	4 - ¾	4-19
2-½	65	5 15⁄16	150	3 ½	89	1 13⁄16	46	2 ¾	70	7⁄16	10	4 - ¾	4-19
3	80	6 ¼	158	3 ¾	95	1 13⁄16	46	2 ¾	70	7⁄16	10	4 - ¾	4-19
4	100	6 15⁄16	176	4 ½	114	2 1⁄16	52	2 ¾	70	7⁄16	10	8 - ¾	8-19
5	125	7 ½	190	5	127	2 3⁄16	56	2 ¾	70	7⁄16	10	8 - ⅞	8-22
6	150	8 ⅝	212	5 ½	139	2 3⁄16	56	2 ¾	70	7⁄16	10	8 - ⅞	8-22
8	200	9 ¼	235	6 ⅞	175	2 ⅝	60	4	102	½	12	8 - ⅞	8-22
10	250	10 7⁄16	265	8	203	2 11⁄16	68	4	102	½	12	12 - 1	12-26
12	300	12	305	9 9⁄16	242	3 1⁄16	78	4	102	½	12	12 - 1	12-26
14	350	14 5⁄16	363	10 ½	267	3 1⁄16	78	4	102	½	12	12-1⅝	12-29
16	400	15 ¾	400	12 3⁄16	309	4	102	5 ½	140	¾	18	16-1⅝	16-29
18	450	16 ⅝	422	13 ⅝	340	4 ½	114	5 ½	140	¾	18	16-1¾	16-32
20	500	17 5⁄16	440	14 3⁄16	362	5	127	5 ½	140	¾	18	20-1¼	20-32
24	600	22 ¼	565	18 1⁄16	459	6 1⁄16	154	6 ½	165	⅞	22	20-1⅜	20-35

Operating Temperature

Seat	Min	Max	Min	Max
Buna-N	-57°C	120°C	-70°F	250°F
EPDM	-18°C	135°C	0°F	300°F
Viton®	-40°C	204°C	-40°F	400°F



US Valve, LLC is dedicated to the goal of total quality management to provide industry-best products and services to our customers.

Approximate dimensions. Apply for certified drawings. Visit www.usvalve.com for full range dimensional drawings. Other material options may be available. Consult factory for lead times.