



# TECHNO BUTTERFLY VALVES

## Model BVW™ Wafer Body Butterfly Valve

### Features

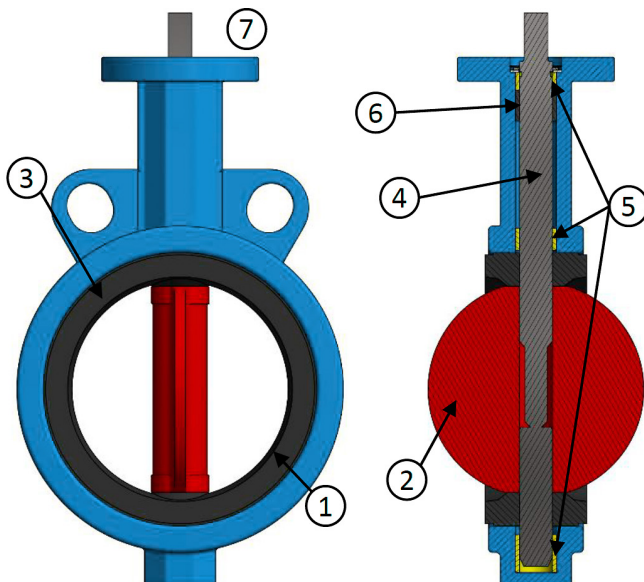
- The Model BVW resilient seated butterfly valve is available in Buna-N, EPDM and Viton® configurations.
- A fully-lined elastomer seat provides complete isolation of the process media from the ductile iron valve body.
- All internal support hardware, including discs, braces and brackets are manufactured of corrosion-resistant stainless steel.
- 2" through 24" body sizes available in Class 150 ratings.
- Wafer style body design includes ISO 5211 mounting pad for international standard manual and automated operators.
- Elastomer U-cup seal packing gland and PTFE shaft bushing provide for superior leak protection.
- All TECHNO Butterfly Valves are designed in accordance with API609 and tested to API598.



Size	Body	Operator	Seat	Pressure Class
2" – 6"	Wafer Style	Ten Position Lever Handle	Resilient	150
8" – 24"	Wafer Style	Gear Operated Hand Wheel	Resilient	150

### Parts Descriptions and Standard Materials of Construction

Item	Component	Material	Grade
1	Body	Ductile Iron	ASTM A395 Gr. 60-40-18
2	Disc	304 Stainless Steel	ASTM A351 Gr. CF8
3	Seat	EPDM	–
4	Stem	410 Stainless Steel	ASTM A276
5	Bushing	PTFE	–
6	U-cup Seal	EPDM	–
7	Operator (not shown)	Malleable Iron	Ten Position Lever Handle or Hand Wheel Design





# TECHNO

## BUTTERFLY VALVES

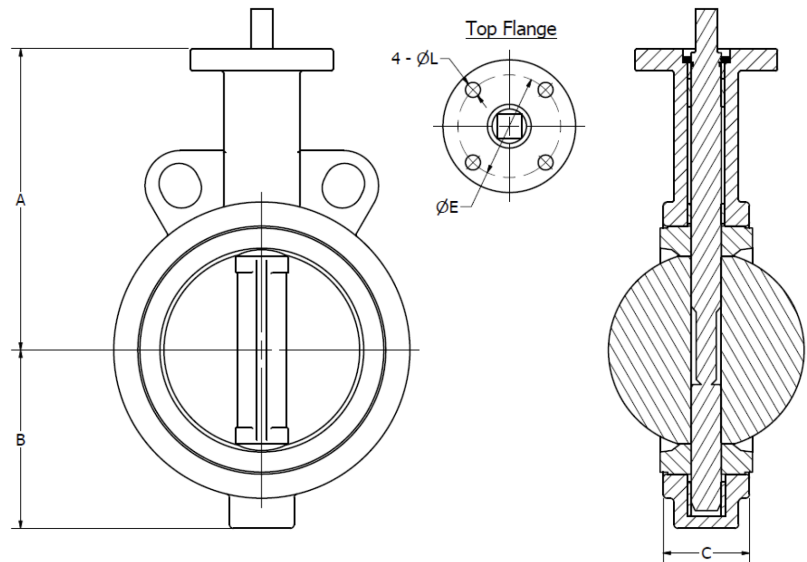
# Model BVW™ Wafer Body Butterfly Valve

## How To Order

**Order Example:** For a 5" TECHNO Model BVW Wafer-Style Body Butterfly Valve, ASME Class 150, Ductile Iron Body with 304 Stainless Steel Disc, EPDM Seat, 410 Stainless Steel Stem with Pin, PTFE Bushing:

Size	Model	Body	Disc	Seat	Operator	Pressure Class	Body Type
5.0	BVW	DI	34	U	LO	A15	WF

SIZE
2" through 24"
MODEL
BVW
BODY MATERIAL
DI – Ductile Iron, ASTM A395 Gr. 60-40-18
DISC MATERIAL
34 – 304 Stainless Steel, ASTM A351 Gr. CF8M
NP – Nickel Plated Ductile Iron, ASTM 536
SEAT MATERIAL
B – Buna-N
U – EPDM
V – Viton®
OPERATOR
LO – Ten Position Lever Handle
GO – Gear Operated Hand Wheel
PRESSURE CLASS
A15 – ASME Class 150
BODY TYPE
WF – Wafer Body



Size		A		B		C		E		L	
in	mm	in	mm	in	mm	in	mm	in	mm	in	mm
2	50	5 1/2	140	2 13/32	61	1 11/16	43	2 3/4	70	7/16	10
2-1/2	65	5 29/32	150	2 11/16	68	1 13/16	46	2 3/4	70	7/16	10
3	80	6 7/32	158	3	76	1 13/16	46	2 3/4	70	7/16	10
4	100	6 15/16	176	3 5/8	92	2 1/16	52	2 3/4	70	7/16	10
5	125	7 15/32	190	4 7/32	107	2 3/16	56	2 3/4	70	7/16	10
6	150	8 5/16	212	4 23/32	120	2 3/16	56	2 3/4	70	7/16	10
8	200	9 1/4	235	5 15/16	151	2 3/8	60	4	102	1/2	12
10	250	10 7/16	265	7 11/32	186	2 11/16	68	4	102	1/2	12
12	300	12	305	8 5/16	211	3 1/16	78	4	102	1/2	12
14	350	14 1/2	368	10 17/32	267	3 1/16	78	4	102	1/2	12
16	400	15 3/4	400	12 3/16	309	4	102	5 1/2	140	3/4	18
18	450	16 5/8	422	13 13/32	340	4 1/2	114	5 1/2	140	3/4	18
20	500	17 11/32	440	14 1/4	362	5	127	5 1/2	140	3/4	18
24	600	22 1/4	565	17 13/16	452	6 1/16	154	6 1/2	165	7/8	22

## Operating Temperature

Seat	Min	Max	Min	Max
Buna-N	-57°C	120°C	-70°F	250°F
EPDM	-18°C	135°C	0°F	300°F
Viton®	-40°C	204°C	-40°F	400°F



US Valve, LLC is dedicated to the goal of total quality management to provide industry-best products and services to our customers.

Approximate dimensions. Apply for certified drawings. Visit [www.usvalve.com](http://www.usvalve.com) for full range dimensional drawings. Other material options may be available. Consult factory for lead times.