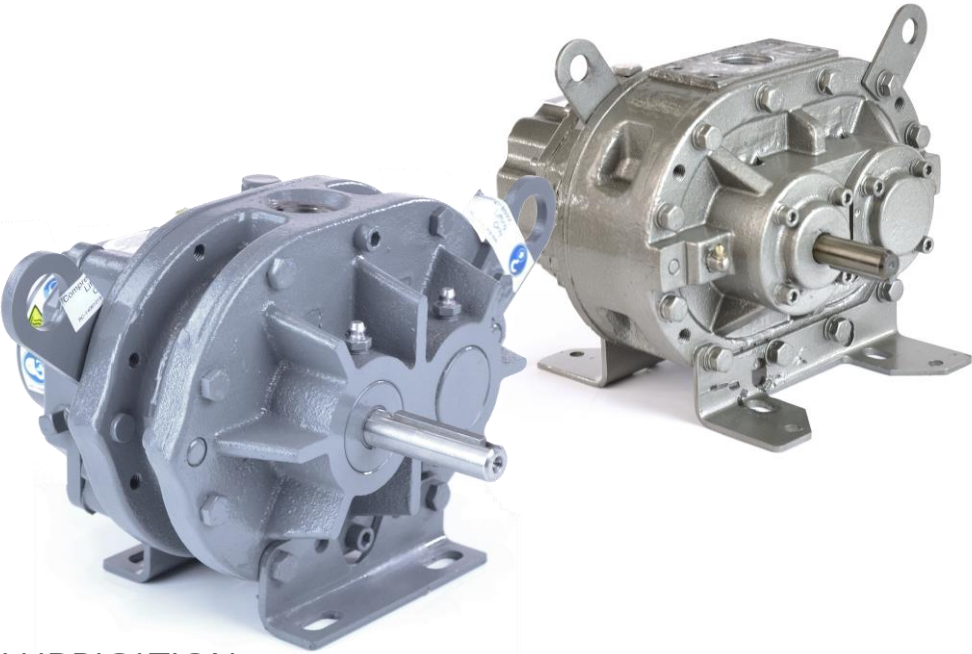


Roots 22 URAI Blower

Comparison with Eurus ZZ2M



LUBRICATION

Both the 22 URAI and ZZ2M utilize oil lubrication on the gear end and grease on the drive end.

	22 URAI	ZZ2M
Required Oil (Horizontal Unit)	6.1 oz	4.6 oz
Required Oil (Vertical Unit)	3.4 oz	1.8 oz
Grease Type	Aluminum Complex NLGI #2	Lithium Complex NLGI #2

Gear End Oil Lubrication

Blowers ship dry from factory and oil must be added before startup. Oil must be an industrial type non-detergent, rust inhibiting, anti-foaming oil of the correct viscosity. See your manual or contact us for assistance selecting the viscosity.

Drive End Grease Lubrication

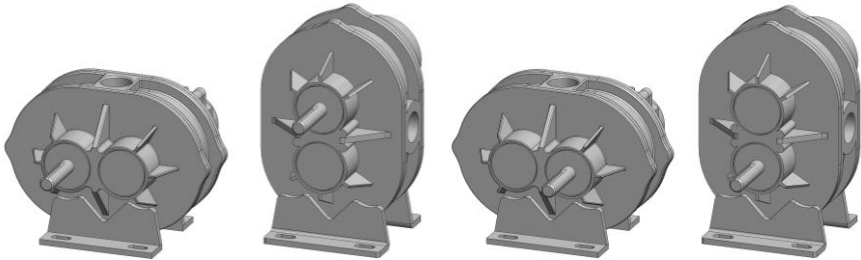
These manufacturers use different types of grease which should not be mixed. If you plan to change to a different grease than the type that came in your blower, a full purge must be done.

SPECIFICATIONS

	ROOTS 22 URAI	EURUS ZZ2M
Flow Range:	to 68 CFM	to 95 CFM
Max Δ Pressure:	12 psi	12 psi
Max Δ Vacuum:	15" Hg	15" Hg
Maximum RPM:	5275	5275
Minimum RPM:	1530	1383
Max ΔT:	225° F	245° F
Connection:	1" FPT	1" FPT
Shaft Diameter:	5/8"	5/8"
Unit Weight:	32 lb	48 lb

CONFIGURATIONS

Both models feature movable mounting feet that allow the blower to be flipped into four different configurations. The manufacturer's part numbers are listed below.



	LEFT HAND	TOP DRIVE	RIGHT DRIVE	BOTTOM DRIVE
22 URAI	6510202L	6510202T	6510202R	6510202B
ZZ2M	ZZ2M	ZZ2M	ZZ2M	ZZ2M

Roots 22 URAI Blower

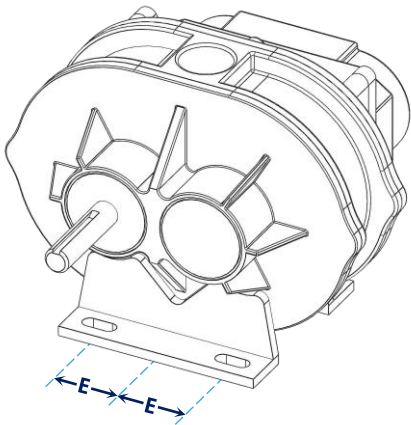
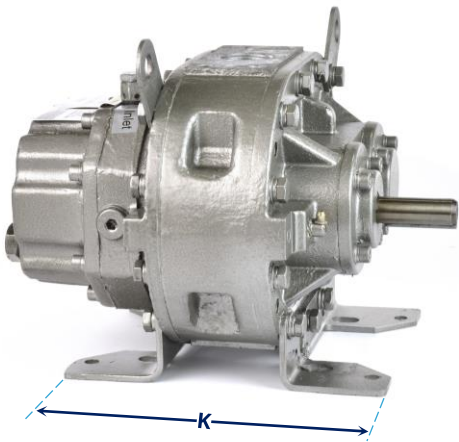
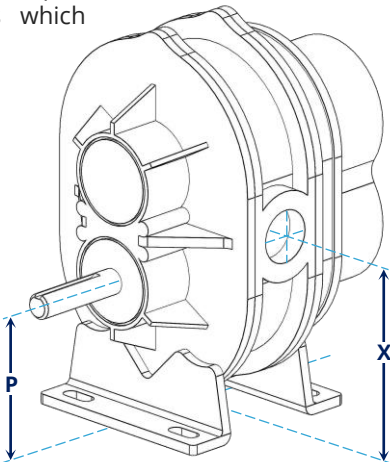
Dimensional Comparison with Eurus ZZ2M

While these models are typically considered drop-in equivalents, there are minor differences which should be considered for your situation.

SHAFT AND CONNECTIONS

Shaft size and connection size are the most important dimensions to compare. With these two models both measurements are the same.

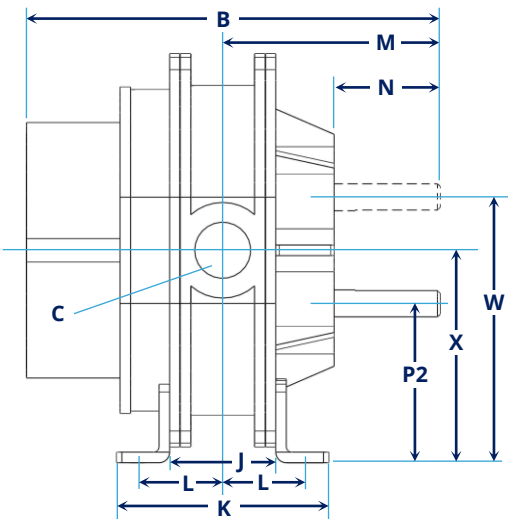
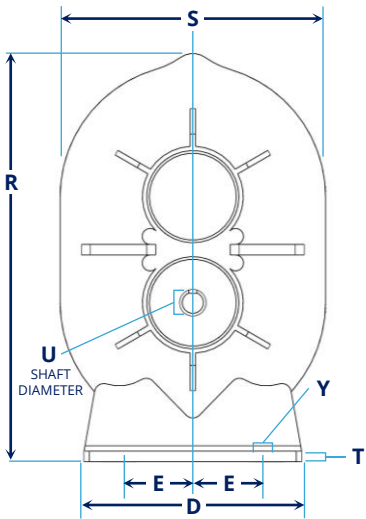
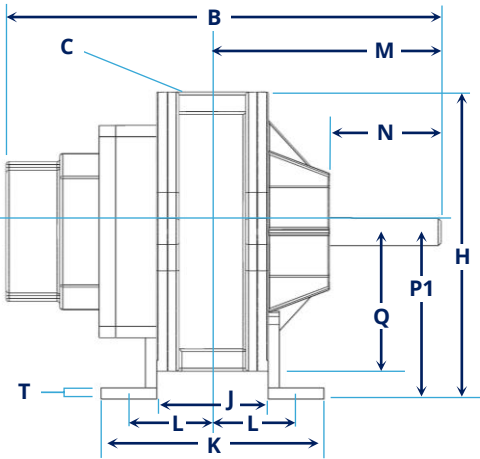
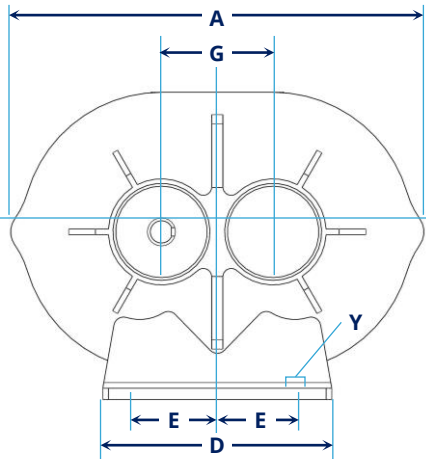
To determine whether any changes to your piping or enclosure will be needed, take note of the placement of the connections (X,H) and the shaft (P,W).



MOUNTING FEET

The placement of the bolt slots in the mounting feet is also important to consider. Both units feature universal mounting feet that can be moved to accommodate changes in configuration.

If switching to a ZZ2M, check dimension K as the feet extend further out and could conflict with other items in a blower package such as drive guards. These feet can be modified if necessary to reduce the length.

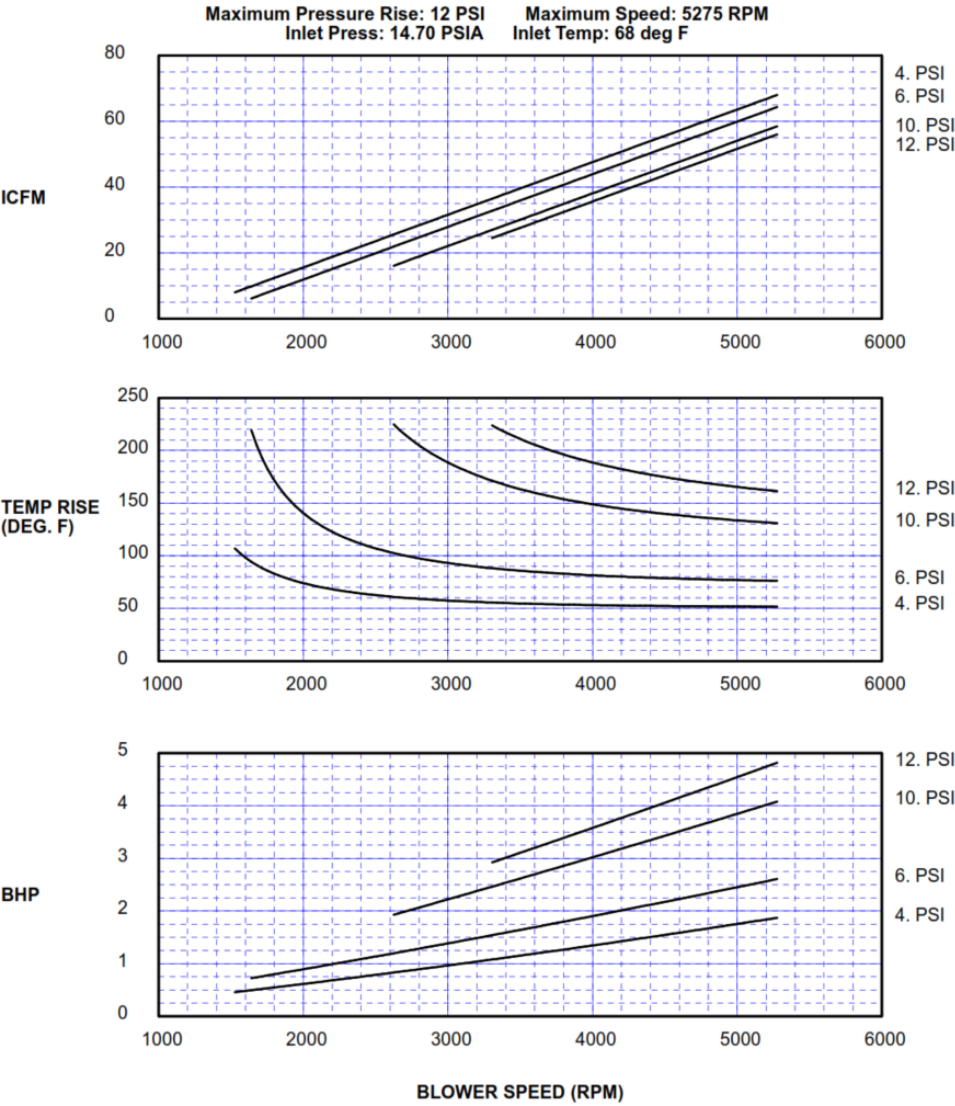


MAKE	MODEL	A	B	C	D	E	G	H	J	K	L	M	N	P1	P2	Q	R	S	T	U	W	X	Y
Roots	22 URAI	9.25	9.75	1" NPT	5.13	1.5 - 2	2.5	6.88	2.5	5	2	5.13	2.5	3.75	3.75	3.13	9.63	6.25	0.25	0.625	6.25	5	0.38 bolts
Eurus	ZZ2M	9.25	10.08	1" NPT	6.69	2	2.756	7.07	2.76	7.52	2.01	5.2	1.93	3.74	3.5	3.33	9.51	6.65	0.16	0.625	6.26	4.88	0.43 x 0.59

All measurements shown in inches

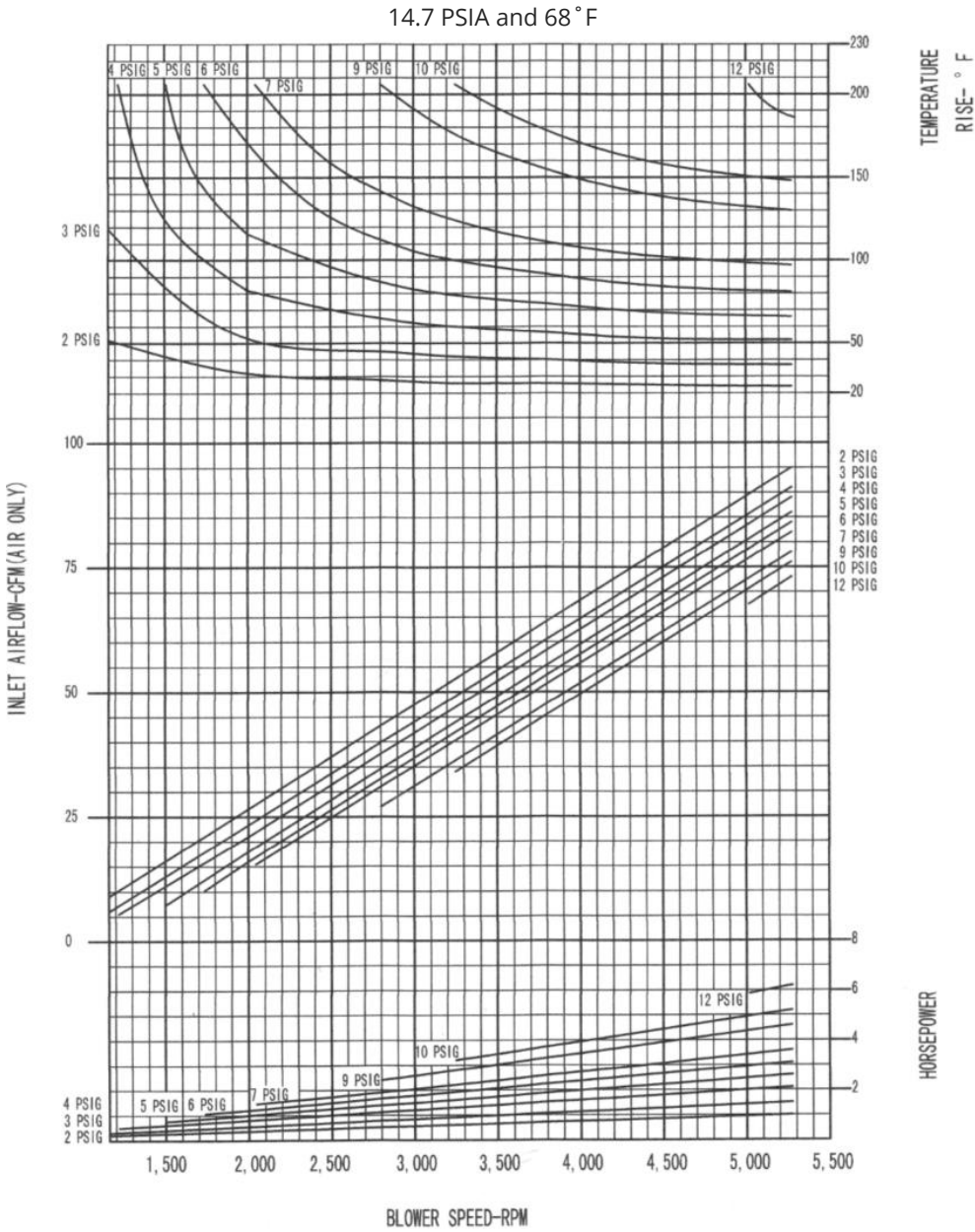
Roots 22 URAI

PRESSURE PERFORMANCE



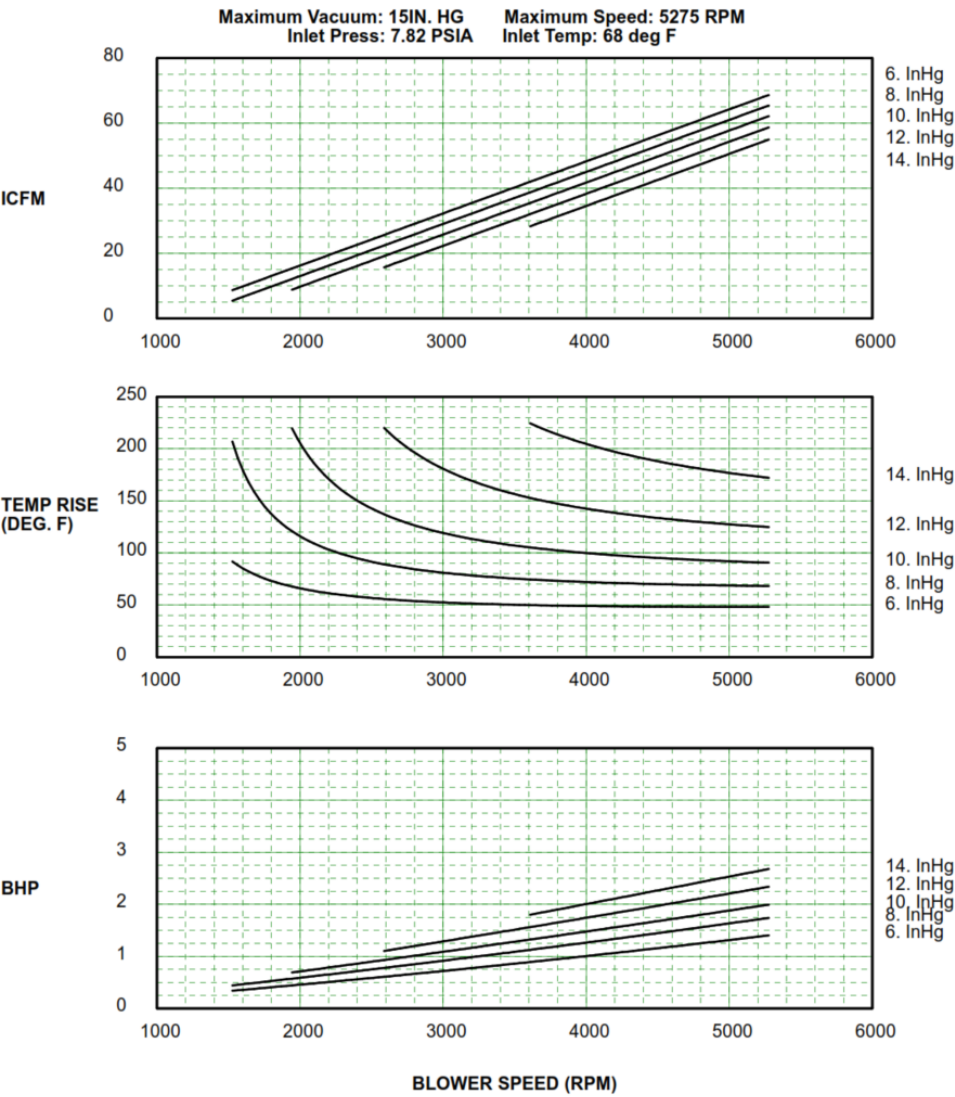
Eurus ZZ2M

PRESSURE PERFORMANCE



Roots 22 URAI

VACUUM PERFORMANCE



Eurus ZZ2M

VACUUM PERFORMANCE

