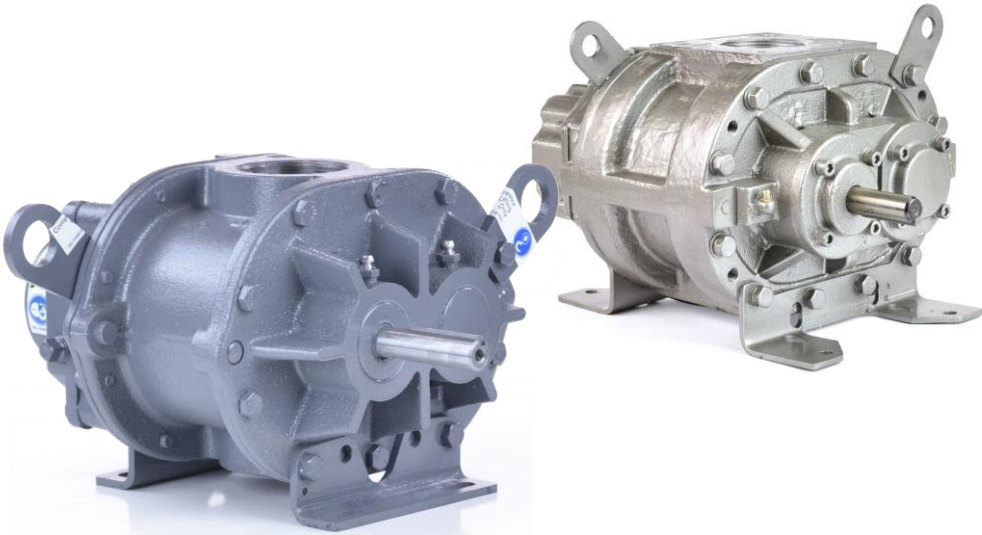


Roots 24 URAI Blower

Comparison with Eurus ZZ2L



SPECIFICATIONS

	ROOTS 24 URAI	EURUS ZZ2L
Flow Range:	to 148 CFM	to 194 CFM
Max Δ Pressure:	7 psi	7 psi
Max Δ Vacuum:	15" Hg	12" Hg
Maximum RPM:	5275	5275
Minimum RPM:	1530	1383
Max ΔT:	210° F	180° F
Connection:	2" FPT	2" FPT
Shaft Diameter:	5/8"	5/8"
Unit Weight:	43 lb	60 lb

LUBRICATION

Both the 24 URAI and ZZ2L utilize oil lubrication on the gear end and grease on the drive end.

	24 URAI	ZZ2L
Required Oil (Horizontal Unit)	6.1 oz	4.6 oz
Required Oil (Vertical Unit)	3.4 oz	1.8 oz
Grease Type	Aluminum Complex NLGI #2	Lithium Complex NLGI #2

Gear End Oil Lubrication

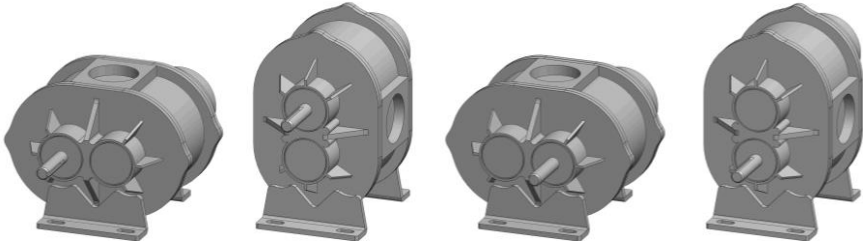
Blowers ship dry from factory and oil must be added before startup. Oil must be an industrial type non-detergent, rust inhibiting, anti-foaming oil of the correct viscosity. See your manual or contact us for assistance selecting the viscosity.

Drive End Grease Lubrication

These manufacturers use different types of grease which should not be mixed. If you plan to change to a different grease than the type that came in your blower, a full purge must be done.

CONFIGURATIONS

Both models feature movable mounting feet that allow the blower to be flipped into four different configurations. The manufacturer's part numbers are listed below.



	LEFT HAND	TOP DRIVE	RIGHT DRIVE	BOTTOM DRIVE
24 URAI	6510302L	6510302T	6510302R	6510302B
ZZ2L	ZZ2L	ZZ2L	ZZ2L	ZZ2L

Roots 24 URAI Blower

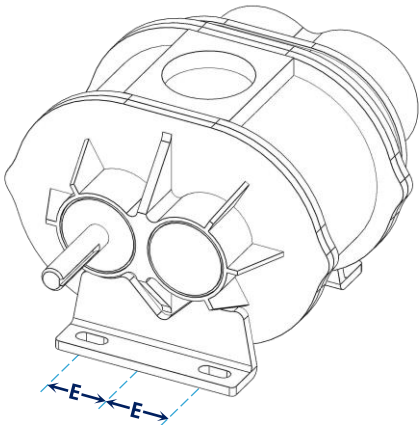
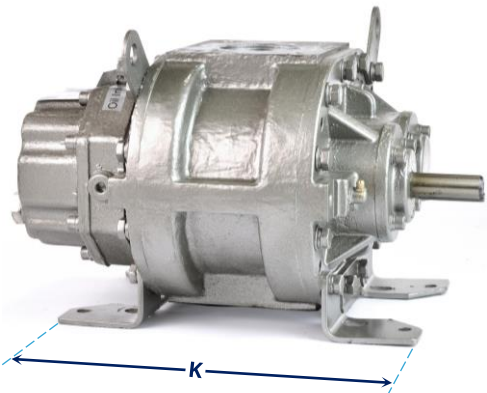
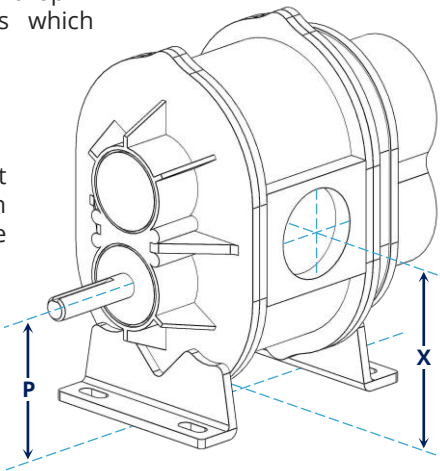
Dimensional Comparison with Eurus ZZ2L

While these models are typically considered drop-in equivalents, there are minor differences which should be considered for your situation.

SHAFT AND CONNECTIONS

Shaft size and connection size are the most important dimensions to compare. With these two models both measurements are the same.

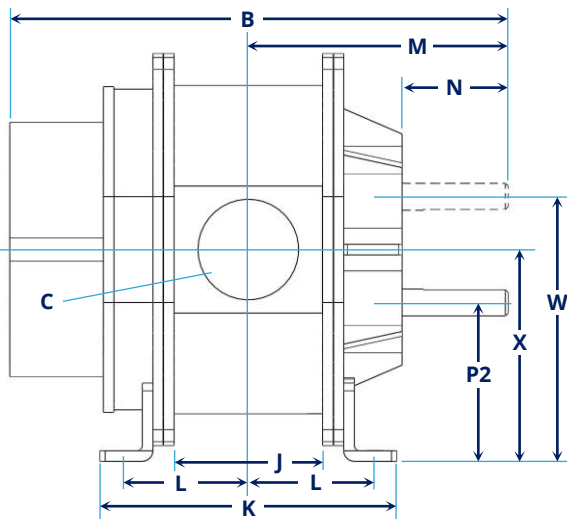
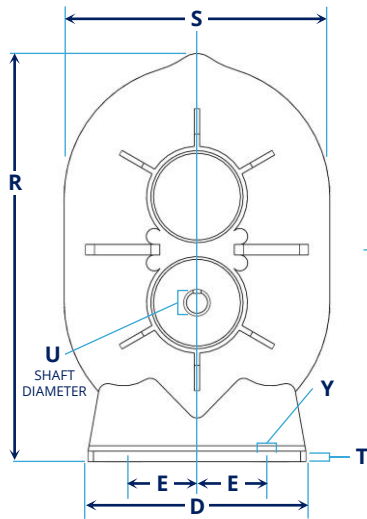
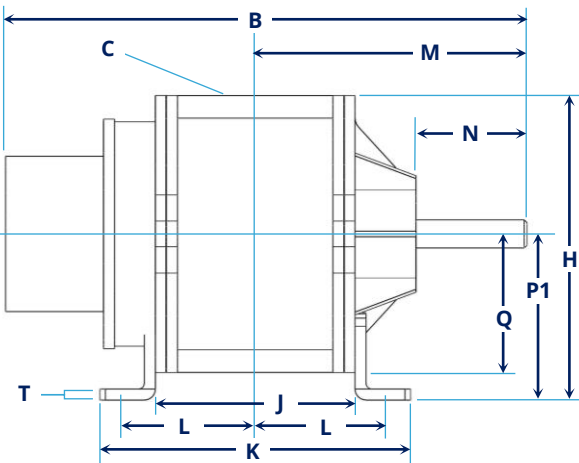
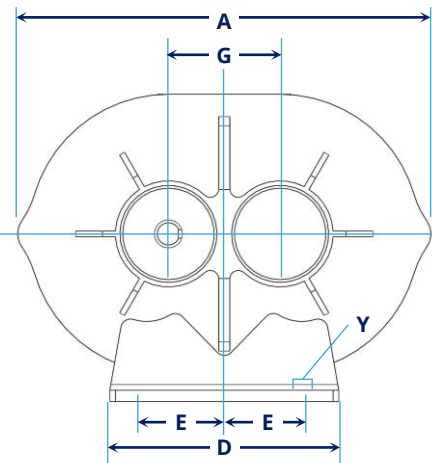
To determine whether any changes to your piping or enclosure will be needed, take note of the placement of the connections (X,H) and the shaft (P,W).



MOUNTING FEET

The placement of the bolt slots in the mounting feet is also important to consider. Both units feature universal mounting feet that can be moved to accommodate changes in configuration.

If switching to a ZZ2L, check dimension K as the feet extend further out and could conflict with other items in a blower package such as drive guards. These feet can be modified if necessary to reduce the length.

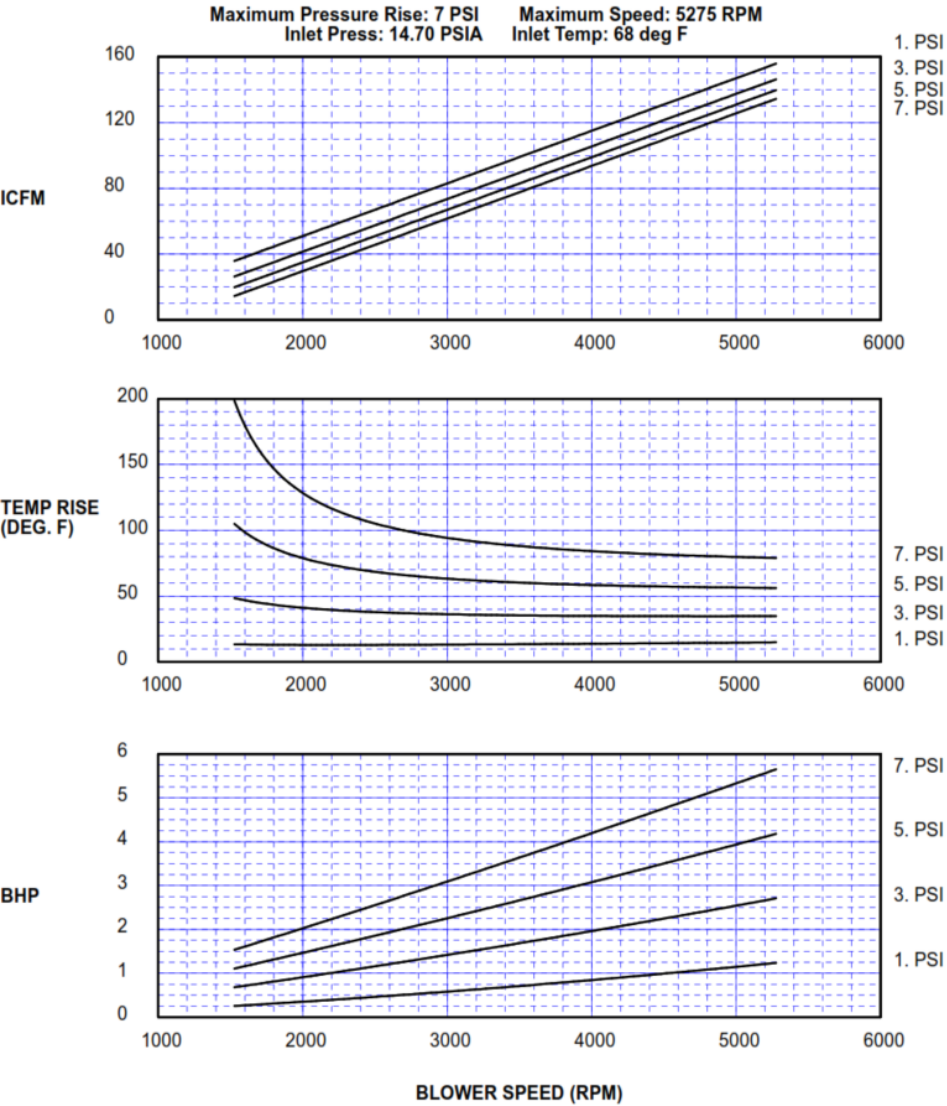


MAKE	MODEL	A	B	C	D	E	G	H	J	K	L	M	N	P1	P2	Q	R	S	T	U	W	X	Y
Roots	24 URAI	9.25	11.75	2" NPT	5.13	1.5 - 2	2.5	6.88	4.5	7	3	6.13	2.5	3.75	3.75	3.13	9.63	6.25	0.25	0.625	6.25	5	0.38 bolts
Eurus	ZZ2L	9.25	12.05	2" NPT	6.69	2	2.756	7.07	4.72	9.49	2.99	6.18	1.93	3.74	3.5	3.33	9.51	6.65	0.16	0.625	6.26	4.88	0.43 x 0.59

All measurements shown in inches

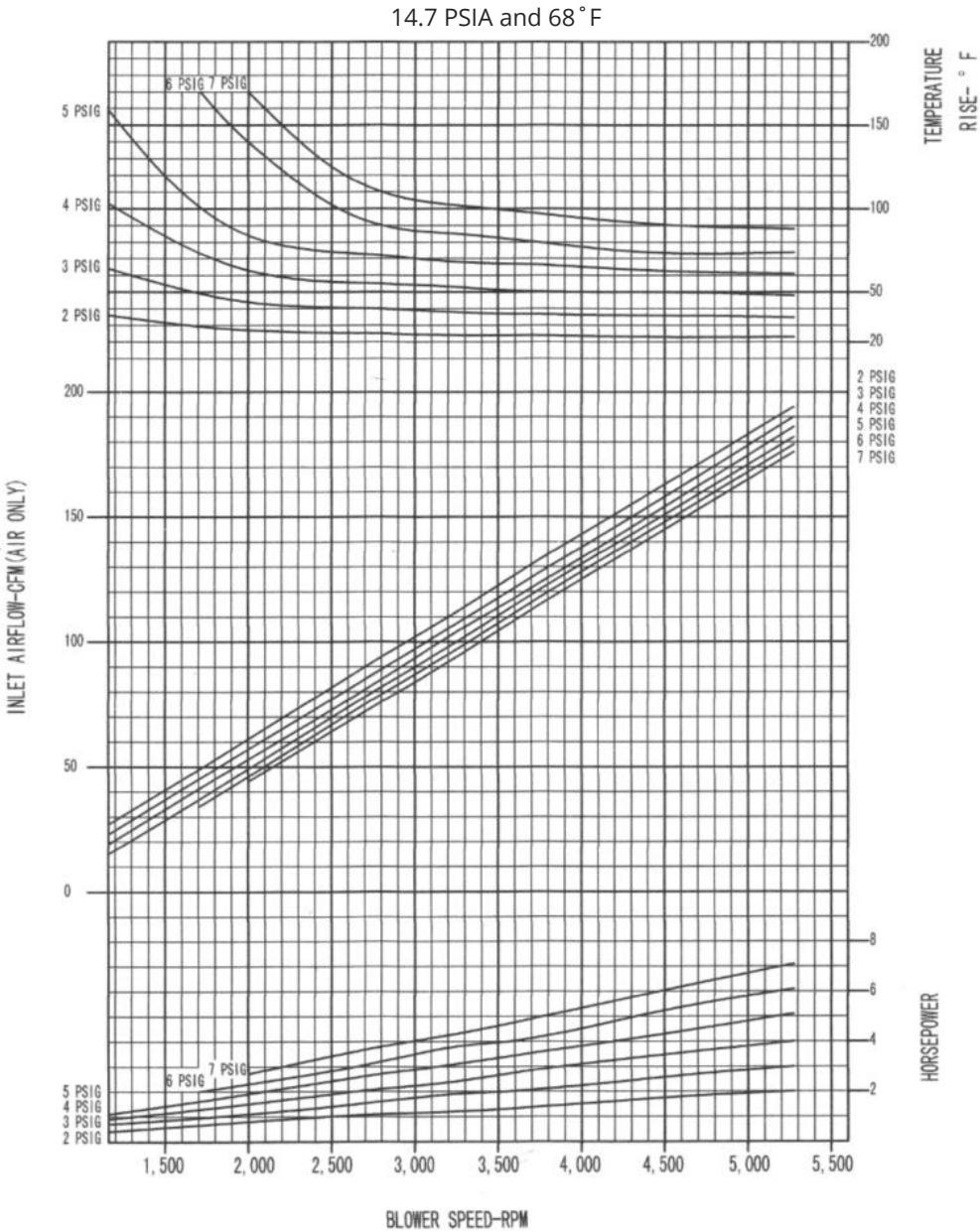
Roots 24 URAI

PRESSURE PERFORMANCE



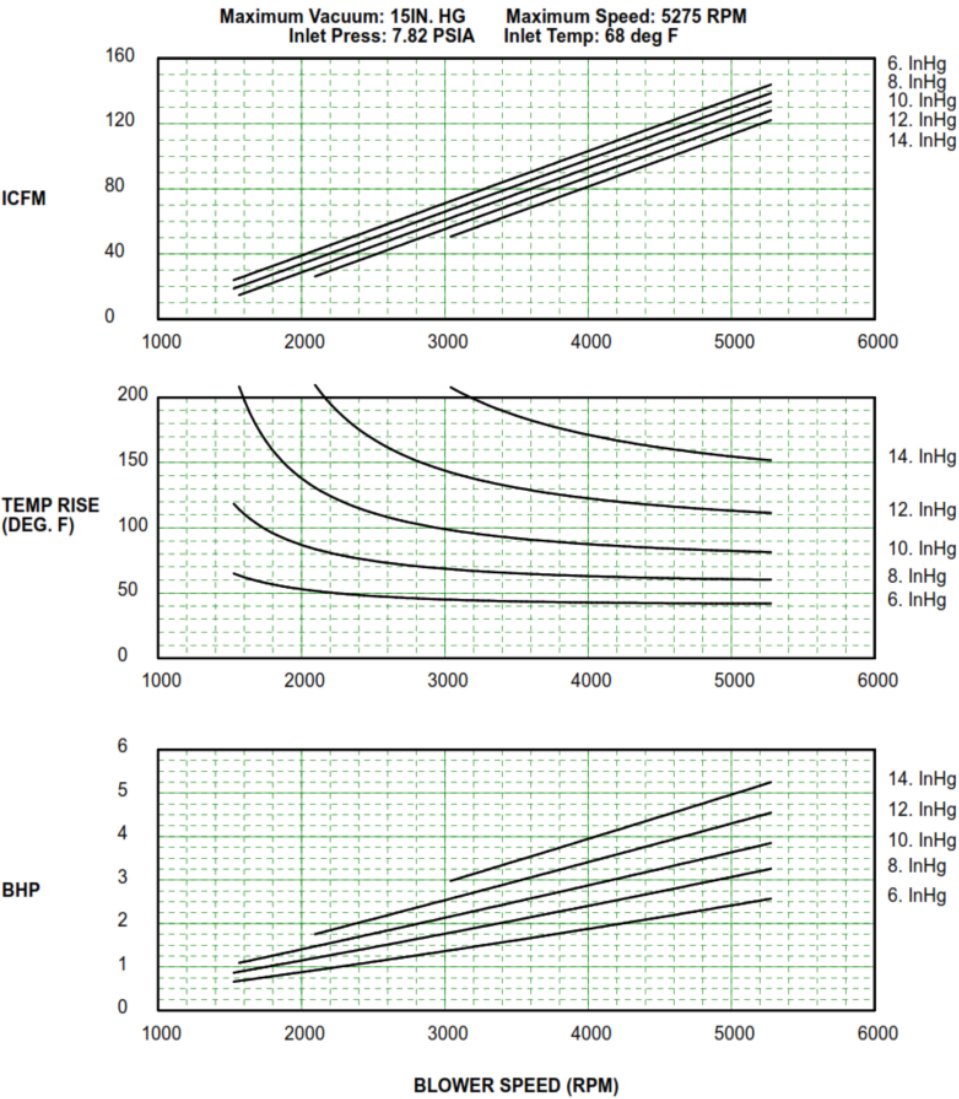
Eurus ZZ2L

PRESSURE PERFORMANCE



Roots 24 URAI

VACUUM PERFORMANCE



Eurus ZZ2L

VACUUM PERFORMANCE

