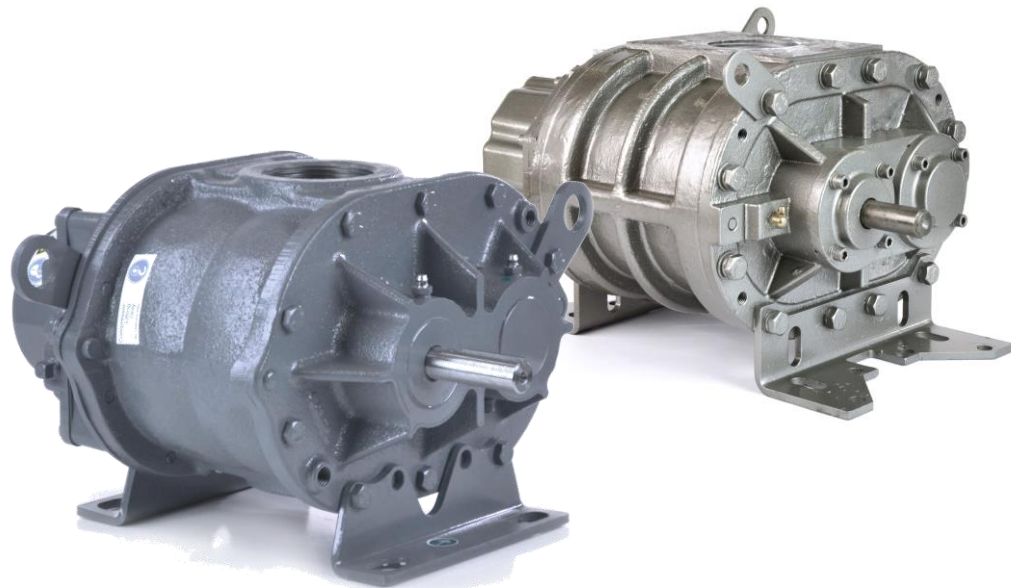


# Roots 36 URAI Blower

## Comparison with Eurus ZZ3L



### SPECIFICATIONS

	ROOTS 36 URAI	EURUS ZZ3L
Flow Range:	to 330 CFM	to 311 CFM
Max Δ Pressure:	7 psi	7 psi
Max Δ Vacuum:	15" Hg	14" Hg
Maximum RPM:	3600	3600
Minimum RPM:	1090	1079
Max ΔT:	225° F	180° F
Connection:	2.5" FPT	2.5" FPT
Shaft Diameter:	3/4"	3/4"
Unit Weight:	102 lb	111 lb

### LUBRICATION

Both the 36 URAI and ZZ3L utilize oil lubrication on the gear end and grease on the drive end.

	36 URAI	ZZ3L
Required Oil (Horizontal Unit)	16 oz	11.44 oz
Required Oil (Vertical Unit)	8.5 oz	4.3 oz
Grease Type	Aluminum Complex NLGI #2	Lithium Complex NLGI #2

#### Gear End Oil Lubrication

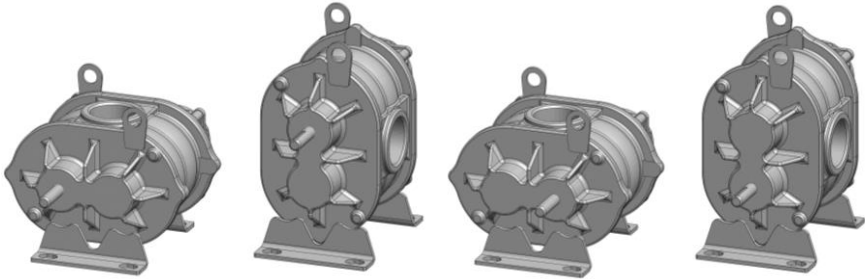
Blowers ship dry from factory and oil must be added before startup. Oil must be an industrial type non-detergent, rust inhibiting, anti-foaming oil of the correct viscosity. See your manual or contact us for assistance selecting the viscosity.

#### Drive End Grease Lubrication

These manufacturers use different types of grease which should not be mixed. If you plan to change to a different grease than the type that came in your blower, a full purge must be done.

### CONFIGURATIONS

Both models feature movable mounting feet that allow the blower to be flipped into four different configurations. The manufacturer's part numbers are listed below.



	LEFT HAND	TOP DRIVE	RIGHT DRIVE	BOTTOM DRIVE
36 URAI	6510602L	6510602T	6510602R	6510602B
ZZ3L	ZZ3L	ZZ3L	ZZ3L	ZZ3L

# Roots 36 URAI Blower

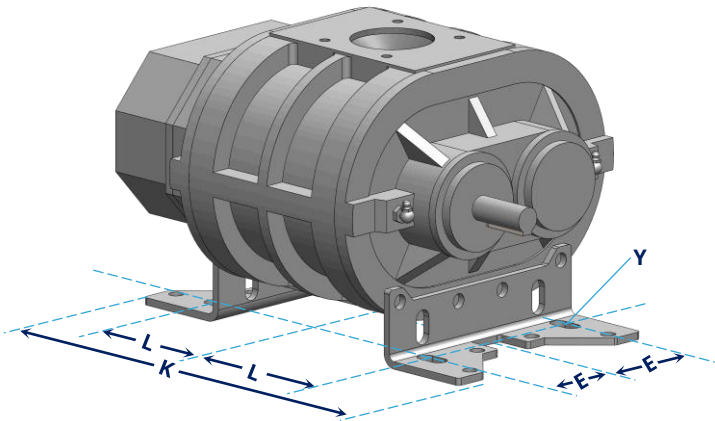
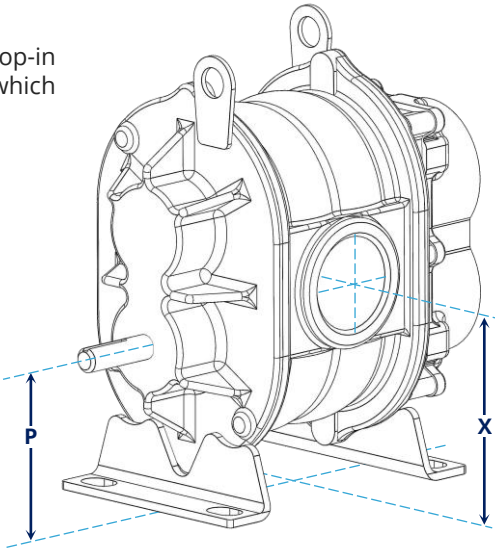
## Dimensional Comparison with Eurus ZZ3L

While these models are typically considered drop-in equivalents, there are minor differences which should be considered for your situation.

### SHAFT AND CONNECTIONS

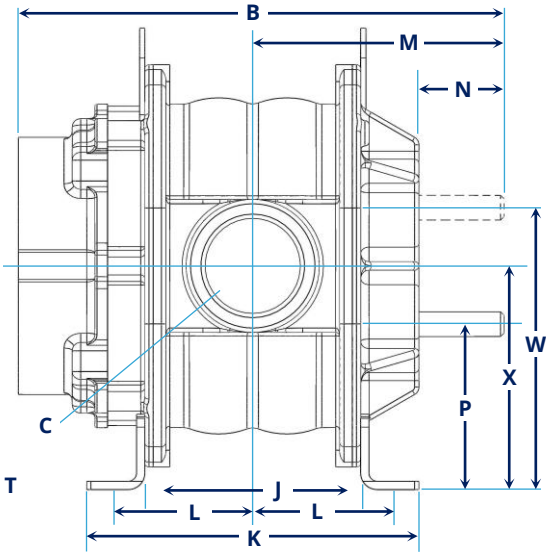
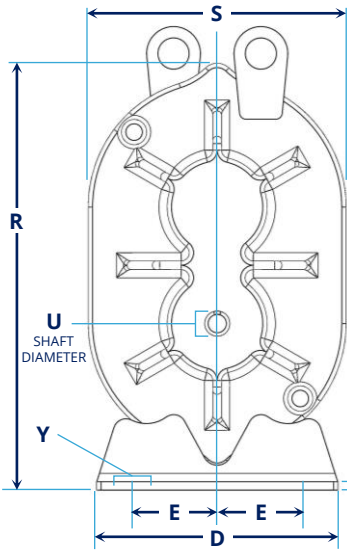
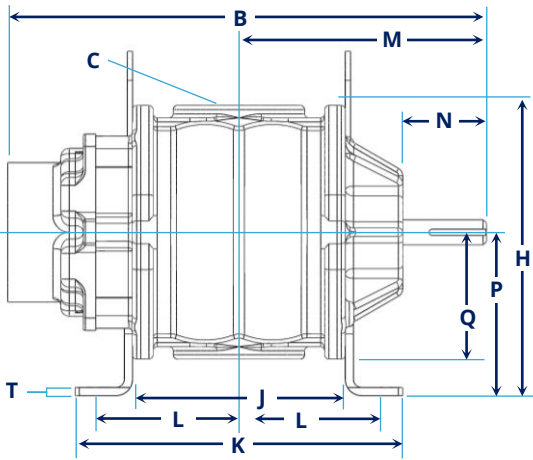
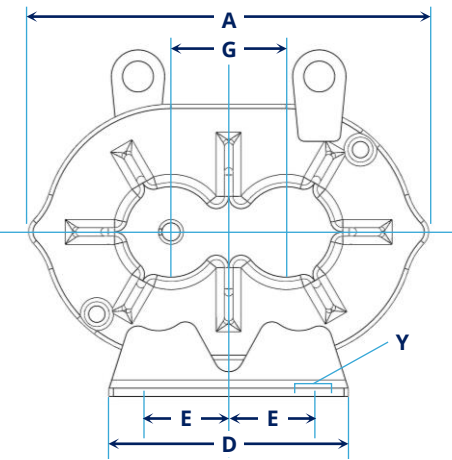
Shaft size and connection size are the most important dimensions to compare. With these two models both measurements are the same.

To determine whether any changes to your piping or enclosure will be needed, take note of the placement of the connections (X,H) and the shaft (P,W).



### MOUNTING FEET

Both the ZZ3L (pictured above) and 36 URAI (pictured left) have oval mounting slots in the feet. If switching to a ZZ3L, check dimension K as the feet extend further out and could conflict with other items in a blower package such as drive guards.

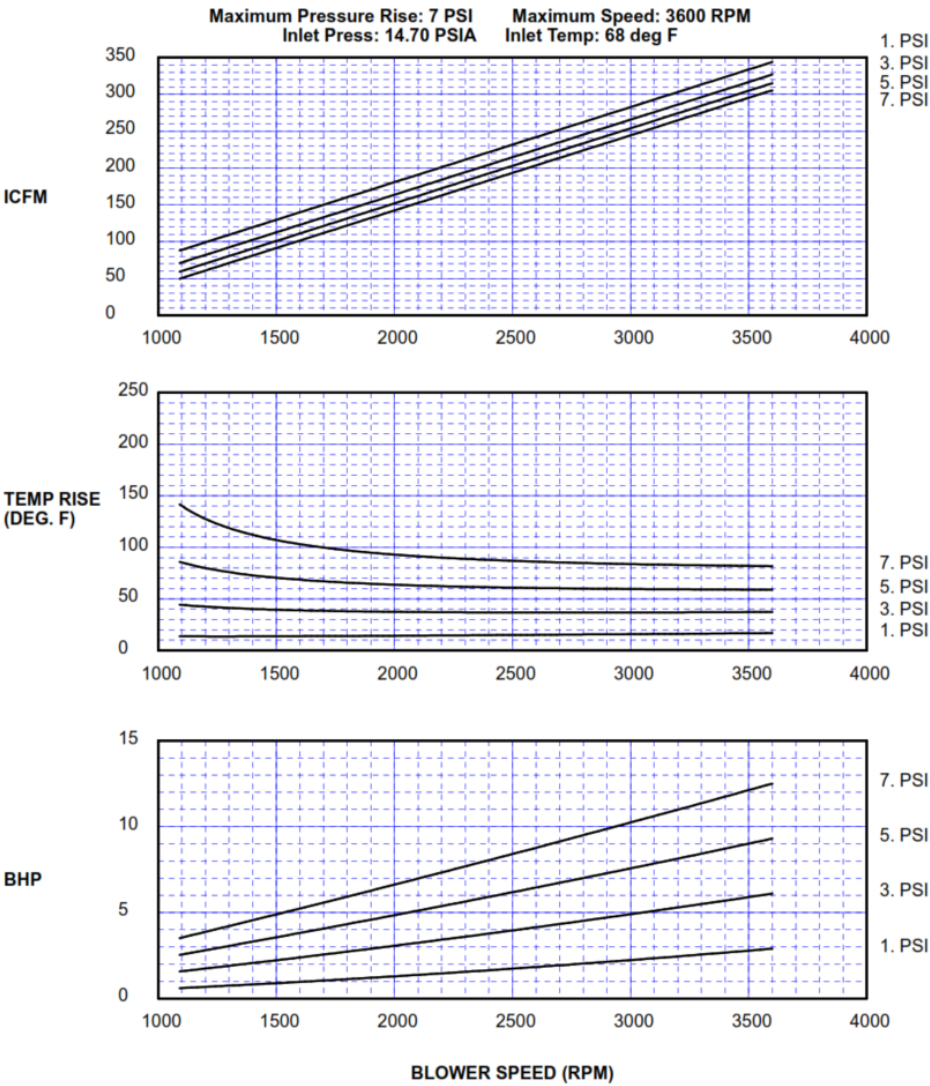


MAKE	MODEL	A	B	C	D	E	G	H	J	K	L	M	N	P	Q	R	S	T	U	W	X	Y
Roots	36 URAI	12.13	14.63	2.5" NPT	7.25	2.5 - 2.88	3.5	8.88	6.5	10	4.18 - 4.44	7.56	2.56	5	3.88	12.81	7.75	0.25	0.75	8.5	6.75	0.44 Bolts
Eurus	ZZ3L	11.3	15.49	2.5" NPT	7.87	2.87	3.54	8.96	7.13	13.58	4.31 - 4.86	7.58	1.95	4.49	3.96	11.91	7.91	0.24	0.75	8.03	6.26	0.55 x 1.1

All measurements shown in inches

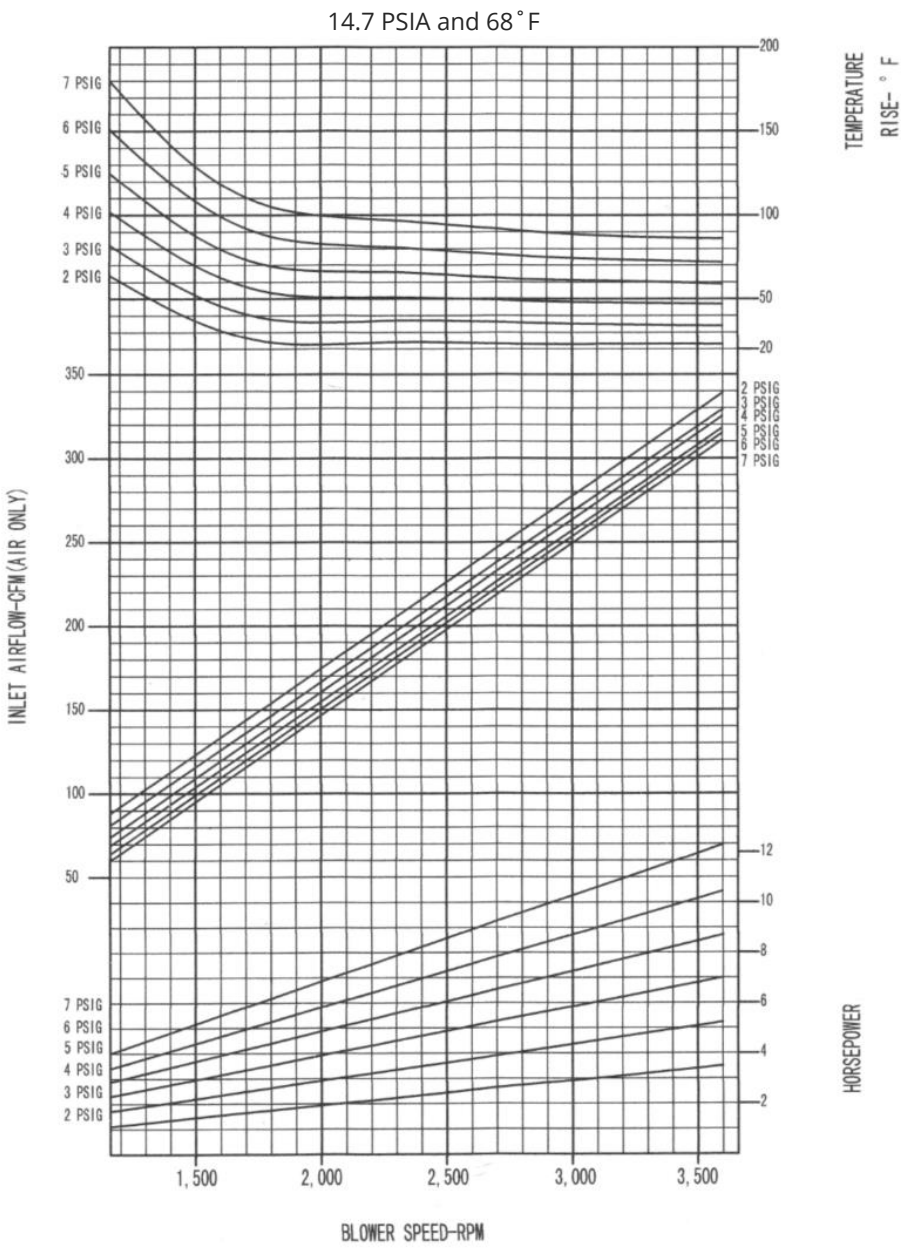
# Roots 36 URAI

PRESSURE PERFORMANCE



# Eurus ZZ3L

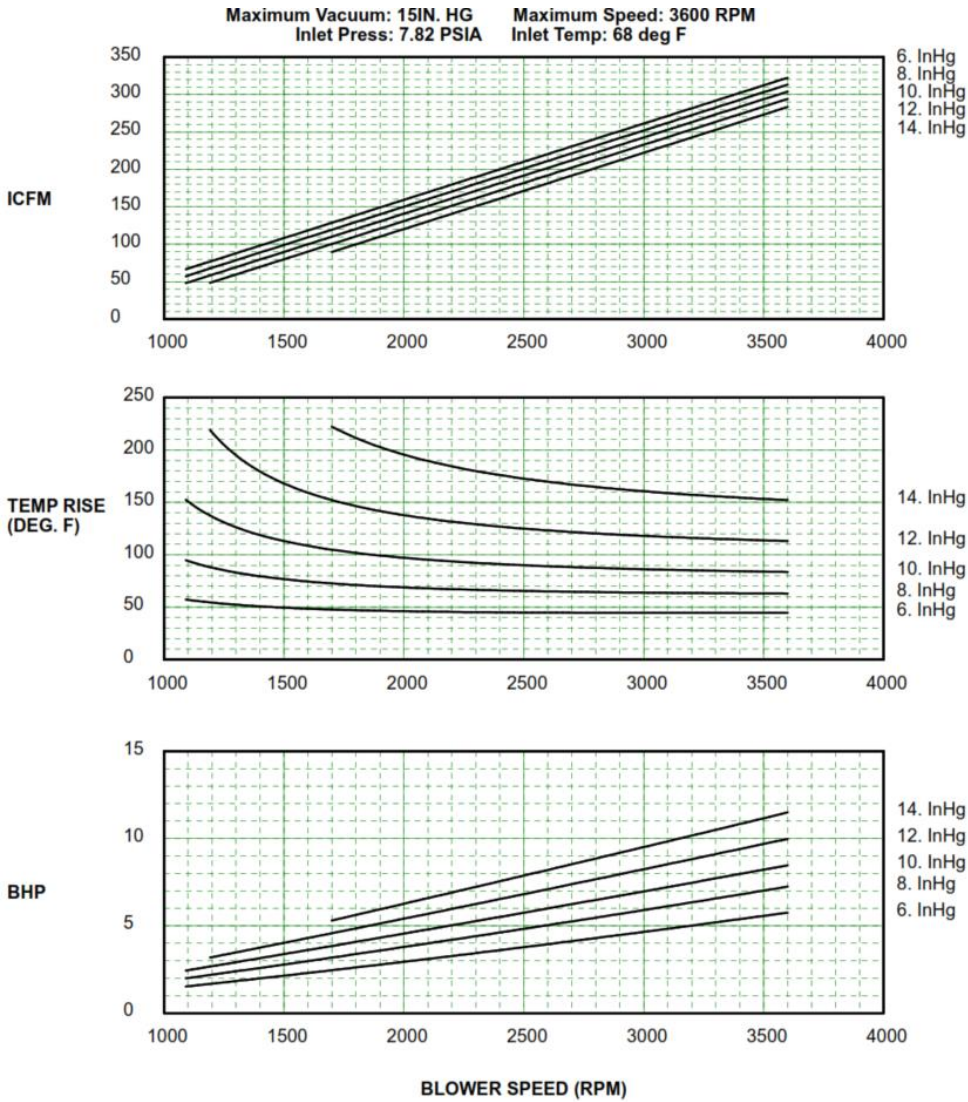
PRESSURE PERFORMANCE





# Roots 36 URAI

VACUUM PERFORMANCE



# Eurus ZZ3L

VACUUM PERFORMANCE

