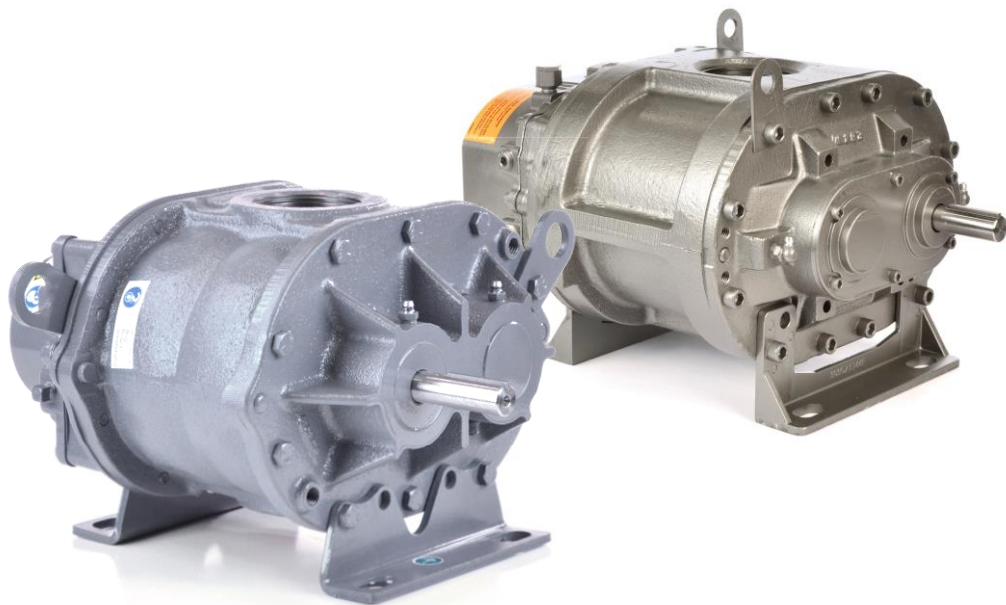


Roots 36 URAI Blower

Comparison with Sutorbilt Legend 3L



Both the 36 URAI and 3L Legend utilize oil lubrication on the gear end and grease on the drive end.

	36 URAI	3L LEGEND
Required Oil (Horizontal Unit)	16 oz	18 oz
Required Oil (Vertical Unit)	8.5 oz	9 oz
Grease Type	Aluminum Complex NLGI #2	Lithium Complex NLGI #2

Gear End Oil Lubrication

Blowers ship dry from factory and oil must be added before startup. Oil must be an industrial type non-detergent, rust inhibiting, anti-foaming oil of the correct viscosity. See your manual or contact us for assistance selecting the viscosity.

Drive End Grease Lubrication

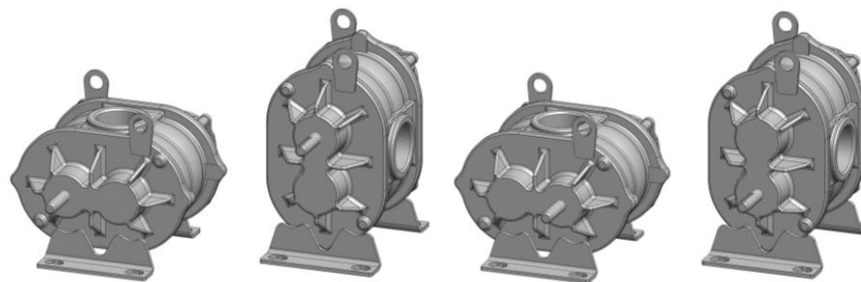
These manufacturers use different types of grease which should not be mixed. If you plan to change to a different grease than the type that came in your blower, a full purge must be done.

SPECIFICATIONS

	ROOTS 36 URAI	SUTORBILT 3L LEGEND
Flow Range:	to 330 CFM	to 350 CFM
Max Δ Pressure:	7 psi	7 psi
Max Δ Vacuum:	15" Hg	14" Hg
Maximum RPM:	3600	3600
Minimum RPM:	1090	1091
Max Δ T:	225° F	160° F
Connection:	2.5" FPT	2.5" FPT
Shaft Diameter:	3/4"	3/4"
Unit Weight:	102 lb	132 lb

CONFIGURATIONS

Both models feature movable mounting feet that allow the blower to be flipped into four different configurations. The manufacturer's part numbers are listed below.



	LEFT HAND	TOP DRIVE	RIGHT DRIVE	BOTTOM DRIVE
36	6510602L	6510602T	6510602R	6510602B
3L	GABLC*A	GABLA*A	GABLD*A	GABLB*A

**The sixth character in the Sutorbilt part number indicates the series designation. As of this print, the current series is S. Previous series include R, P and L.*

Roots 36 URAI Blower

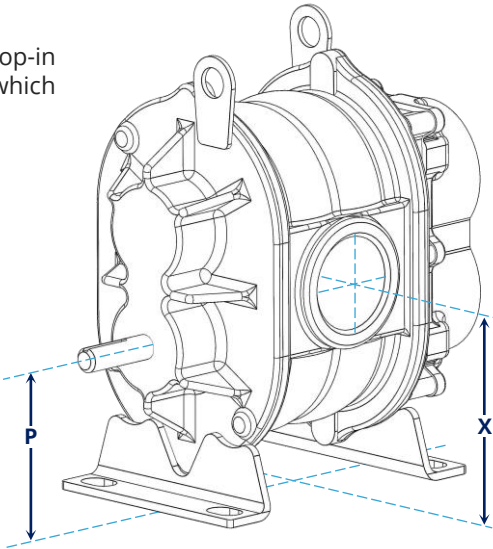
Dimensional Comparison with Sutorbilt 3L

While these models are typically considered drop-in equivalents, there are minor differences which should be considered for your situation.

SHAFT AND CONNECTIONS

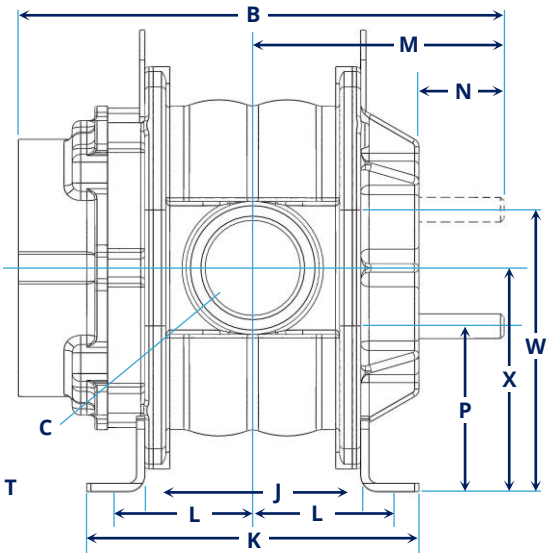
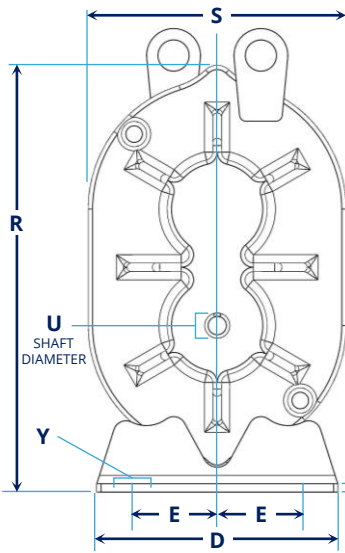
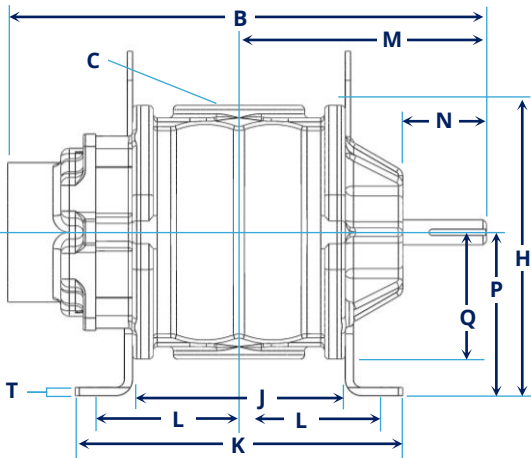
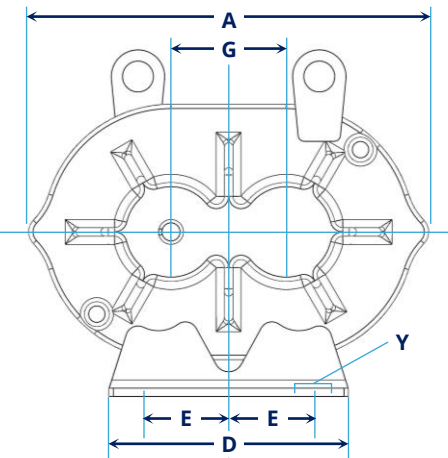
Shaft size and connection size are the most important dimensions to compare. With these two models both measurements are the same.

To determine whether any changes to your piping or enclosure will be needed, take note of the placement of the connections (X,H) and the shaft (P,W).



MOUNTING FEET

The placement of the bolt slots in the mounting feet is also important to consider. Both units feature universal mounting feet that can be moved to accommodate changes in configuration.

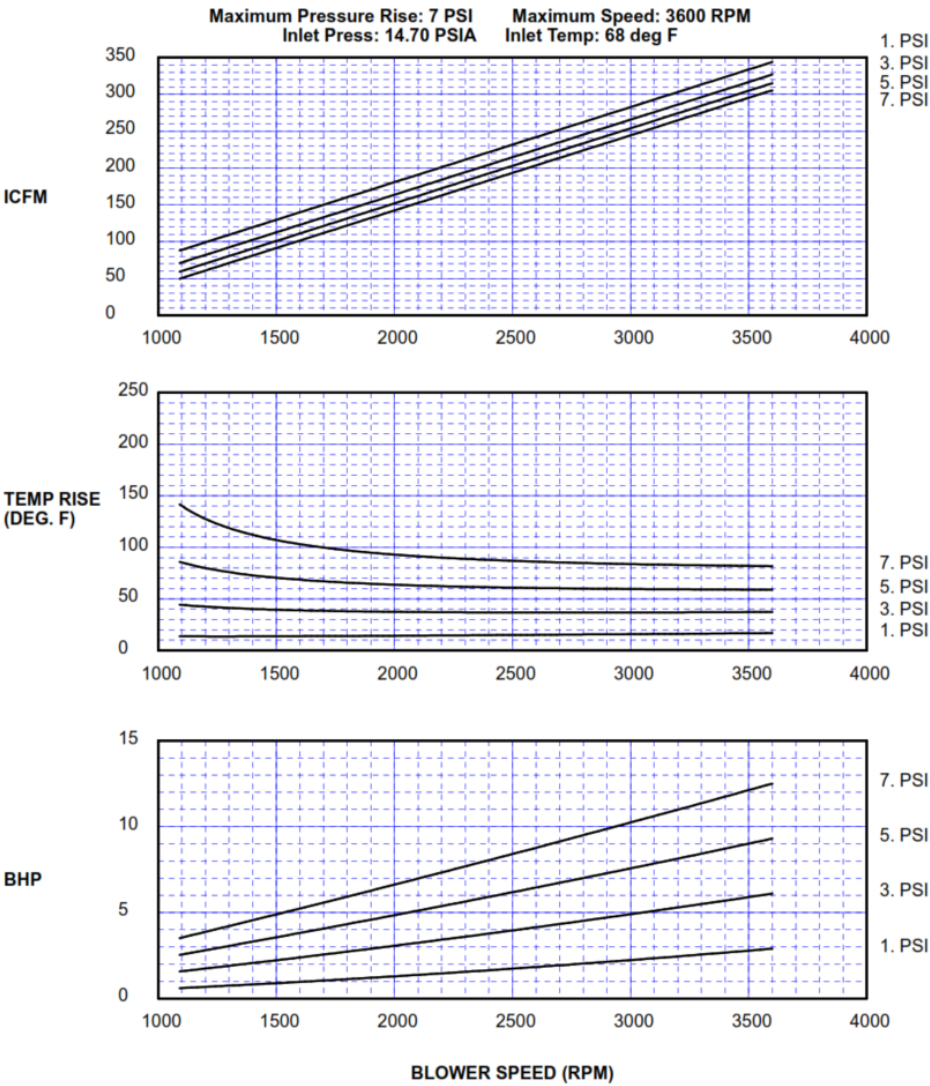


MAKE	MODEL	A	B	C	D	E	G	H	J	K	L	M	N	P1	P2	Q	R	S	T	U	W	X	Y
Roots	36 URAI	12.13	14.63	2.5" NPT	7.25	2.5 - 2.88	3.5	8.88	6.5	10	4.18 - 4.44	7.56	2.56	5	5	3.88	12.81	7.75	0.25	0.75	8.5	6.75	0.44 bolts
Sutorbilt	3L	11.26	15.55	2.5" NPT	7.75	2.68	3.5	8.88	7	10.25	4.44	7.61	2.05	5	4.5	3.88	11.88	7.76	0.25	0.75	8	6.25	0.62 x 1.12

All measurements shown in inches

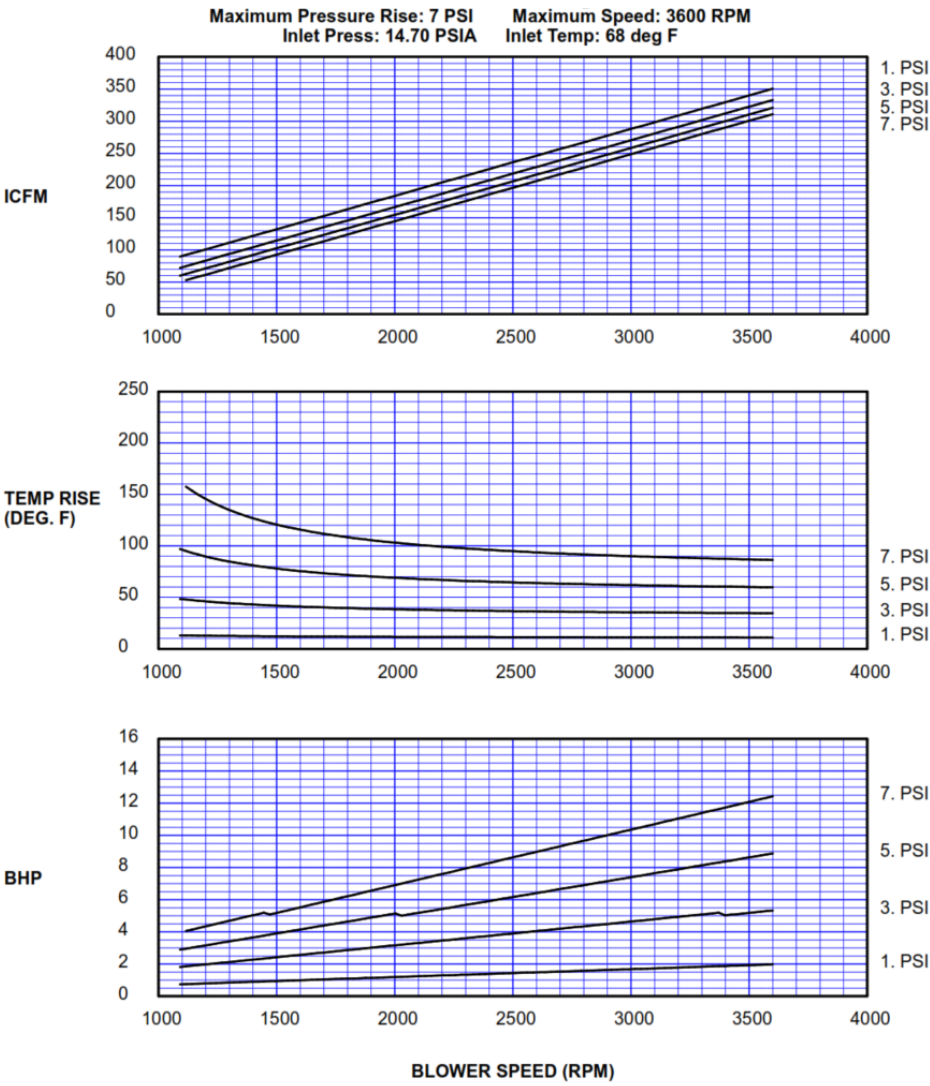
Roots 36 URAI

PRESSURE PERFORMANCE



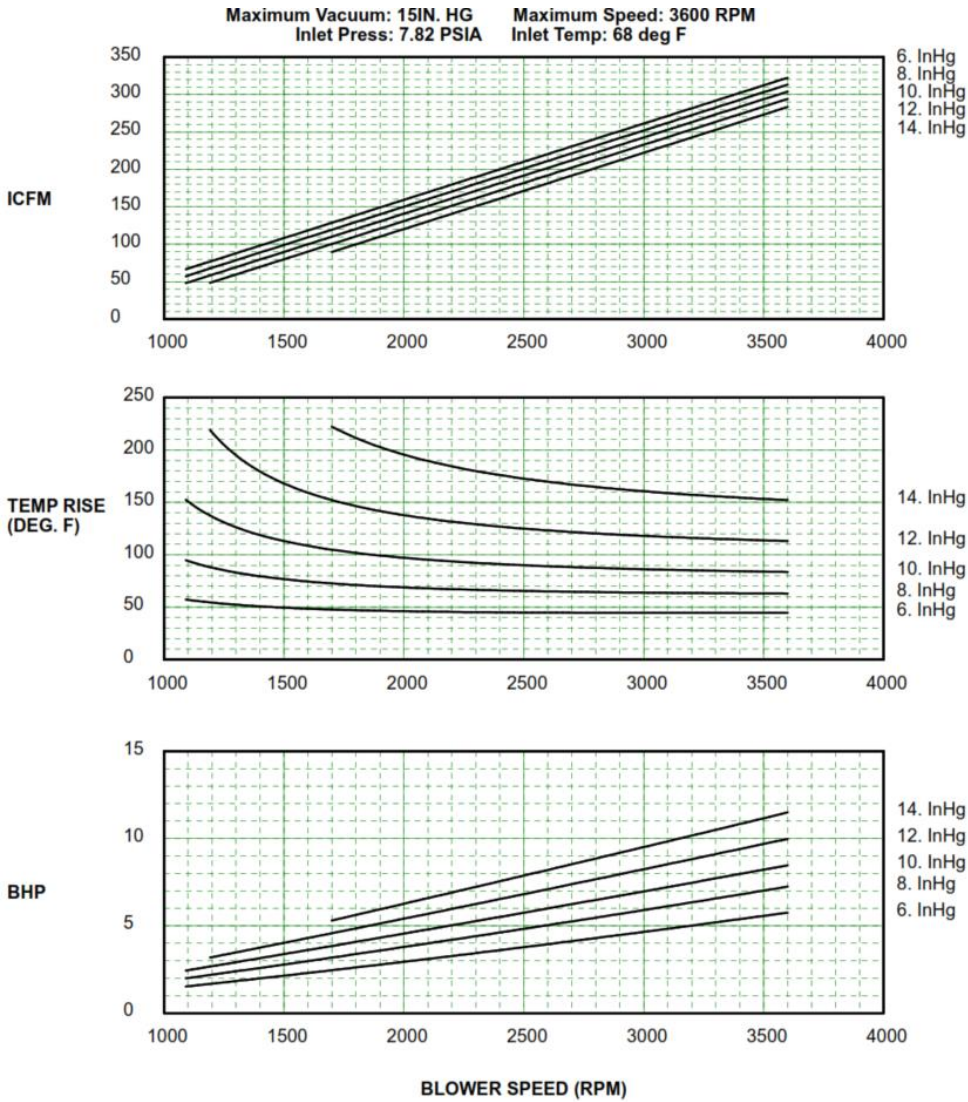
Sutorbilt 3L Legend

PRESSURE PERFORMANCE



Roots 36 URAI

VACUUM PERFORMANCE



Sutorbilt 3L Legend

VACUUM PERFORMANCE

