

# Roots 36 URAI Blower

## Comparison with Tuthill 3006 Dual Lobe Blower

The 3006 model is in the Tuthill / M-D Pneumatics Competitor series and is also referred to as a 3006 CP. This unit is available in either a 2-lobe or 3-lobe design. This comparison document applies to the 2-lobe unit.



### SPECIFICATIONS

	ROOTS 36 URAI	TUTHILL 3006 CP
Flow Range:	to 330 CFM	to 310 CFM
Max $\Delta$ Pressure:	7 psi	7 psi
Max $\Delta$ Vacuum:	15" Hg	15" Hg
Maximum RPM:	3600	3600
Minimum RPM:	1090	1150
Max $\Delta$ T:	225° F	170° F
Connection:	2.5" FPT	2.5" FPT
Shaft Diameter:	<b>3/4"</b>	<b>7/8"</b>
Unit Weight:	102 lb	113 lb

### LUBRICATION

Both the 36 URAI and 3006 CP utilize oil lubrication on the gear end and grease on the drive end.

	36 URAI	3006 CP
Required Oil (Horizontal Unit)	16 oz	6.0 oz
Required Oil (Vertical Unit)	8.5 oz	3.4 oz
Grease Type	Aluminum Complex NLGI #2	Lithium Complex NLGI #2

#### Gear End Oil Lubrication

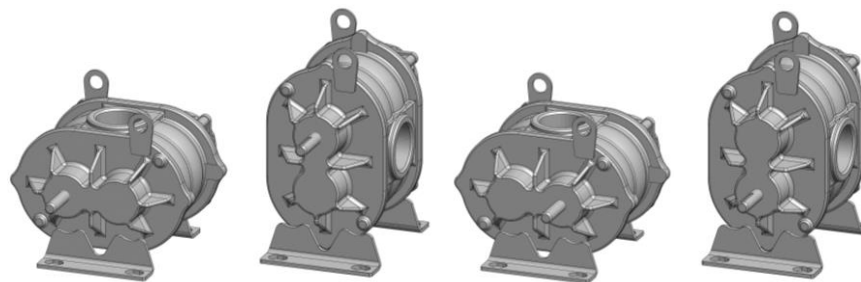
Blowers ship dry from factory and oil must be added before startup. Oil must be an industrial type non-detergent, rust inhibiting, anti-foaming oil of the correct viscosity. See your manual or contact us for assistance selecting the viscosity.

#### Drive End Grease Lubrication

These manufacturers use different types of grease which should not be mixed. If you plan to change to a different grease than the type that came in your blower, a full purge must be done.

### CONFIGURATIONS

Both models feature movable mounting feet that allow the blower to be flipped into four different configurations. The manufacturer's part numbers are listed below.



	LEFT HAND	TOP DRIVE	RIGHT DRIVE	BOTTOM DRIVE
36 URAI	6510602L	6510602T	6510602R	6510602B
3006 CP	3006-A6L2CV1-A	3006-A6T2CV1-A	3006-A6R2CV1-A	3006-A6B2CV1-A

\*Characters in the Tuthill model designations indicate materials, configurations, and special options.

# Roots 36 URAI Blower

## Dimensional Comparison with 2-Lobe 3006 CP

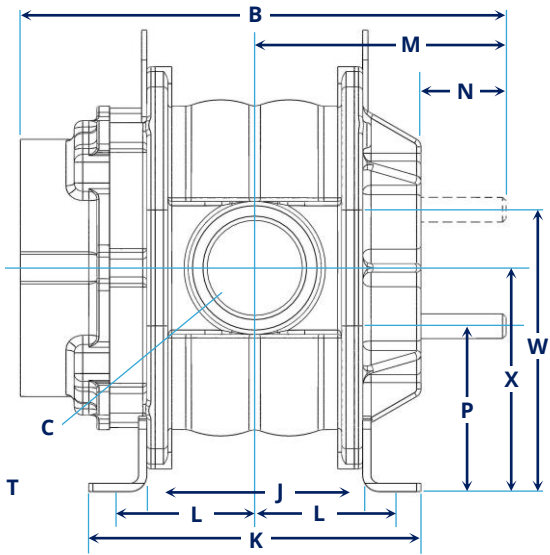
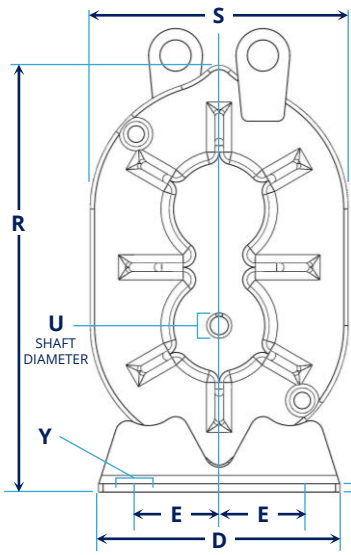
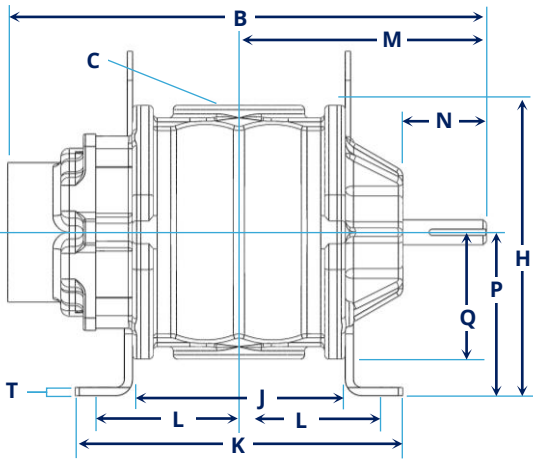
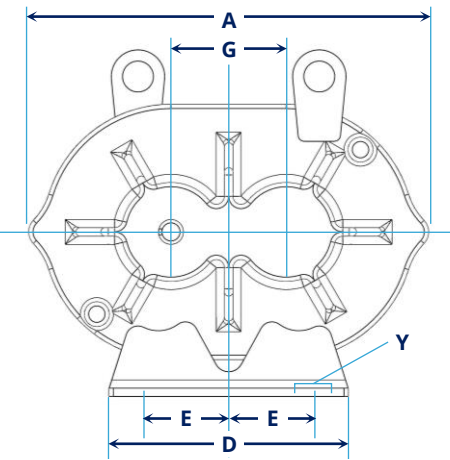
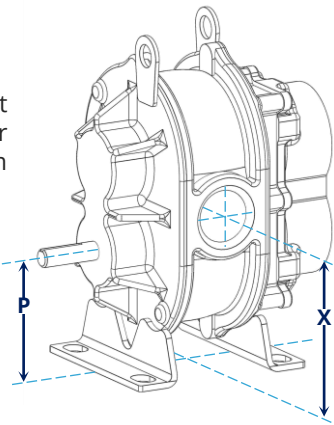
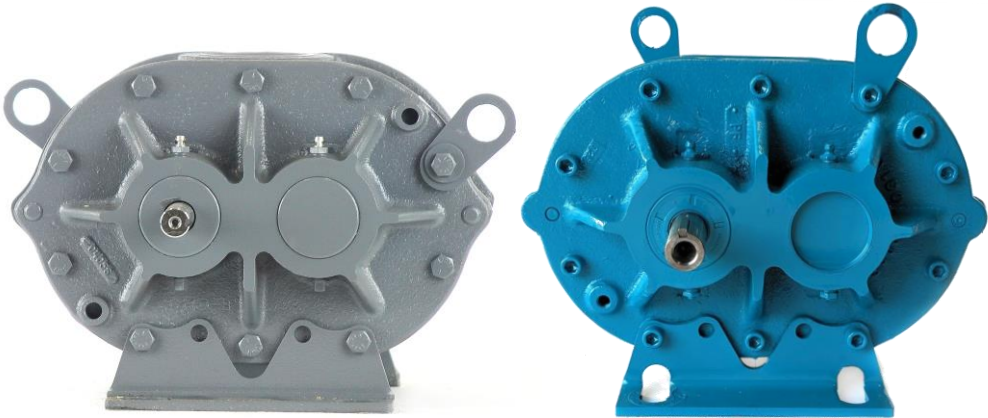
These models are considered equivalents when comparing performance and overall dimensions, however they are not “drop-in” replacements due to a variance in the shaft size.

### DIFFERENT SHAFT SIZE

Shaft size and connection size are the most important dimensions to compare. The Tuthill unit has a slightly larger shaft size than the Roots unit, so if you are switching from one to the other a different bushing will be required.

### CONNECTIONS

These units have very similar dimensions, but take note of the placement of the connections (X,H), the shaft (P,W), and the mounting feet (E,L,Y) to determine whether any changes to your piping or enclosure will be needed.

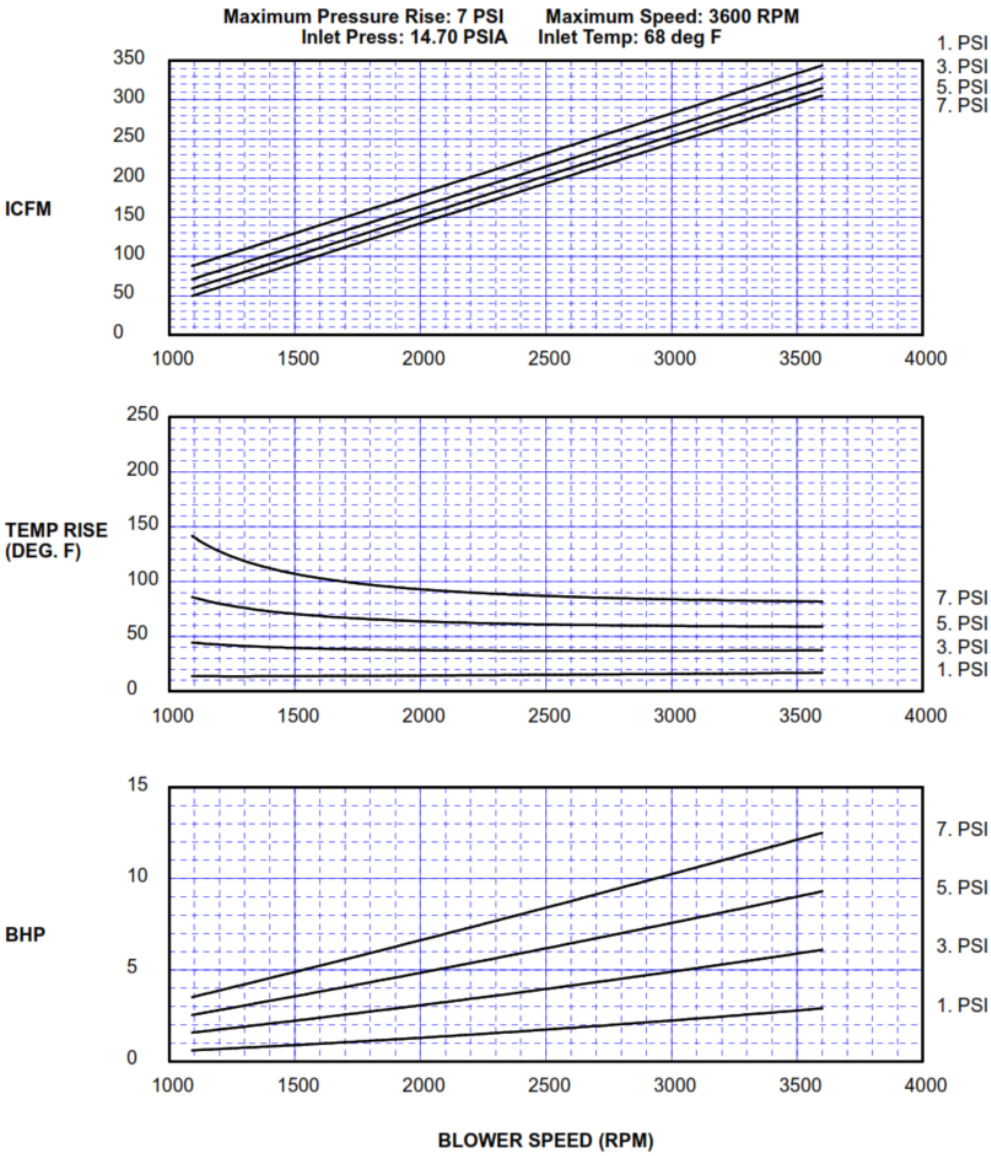


MAKE	MODEL	A	B	C	D	E	G	H	J	K	L	M	N	P	Q	R	S	T	U	W	X	Y
Roots	36 URAI	12.13	14.63	2.5" NPT	7.25	2.5 – 2.88	3.5	8.88	6.5	10	4.18 – 4.44	7.56	2.56	5	3.88	12.81	7.75	0.25	0.75	8.5	6.75	0.44 Bolts
Tuthill	3006 CP	12.19	14.75	2.5" NPT	7.25	2.69	3.5	8.94	6.5	10	4.31	7.44	2.44	5	3.94	12.81	7.88		0.875	8.5	6.75	0.75 Bolts

All measurements shown in inches

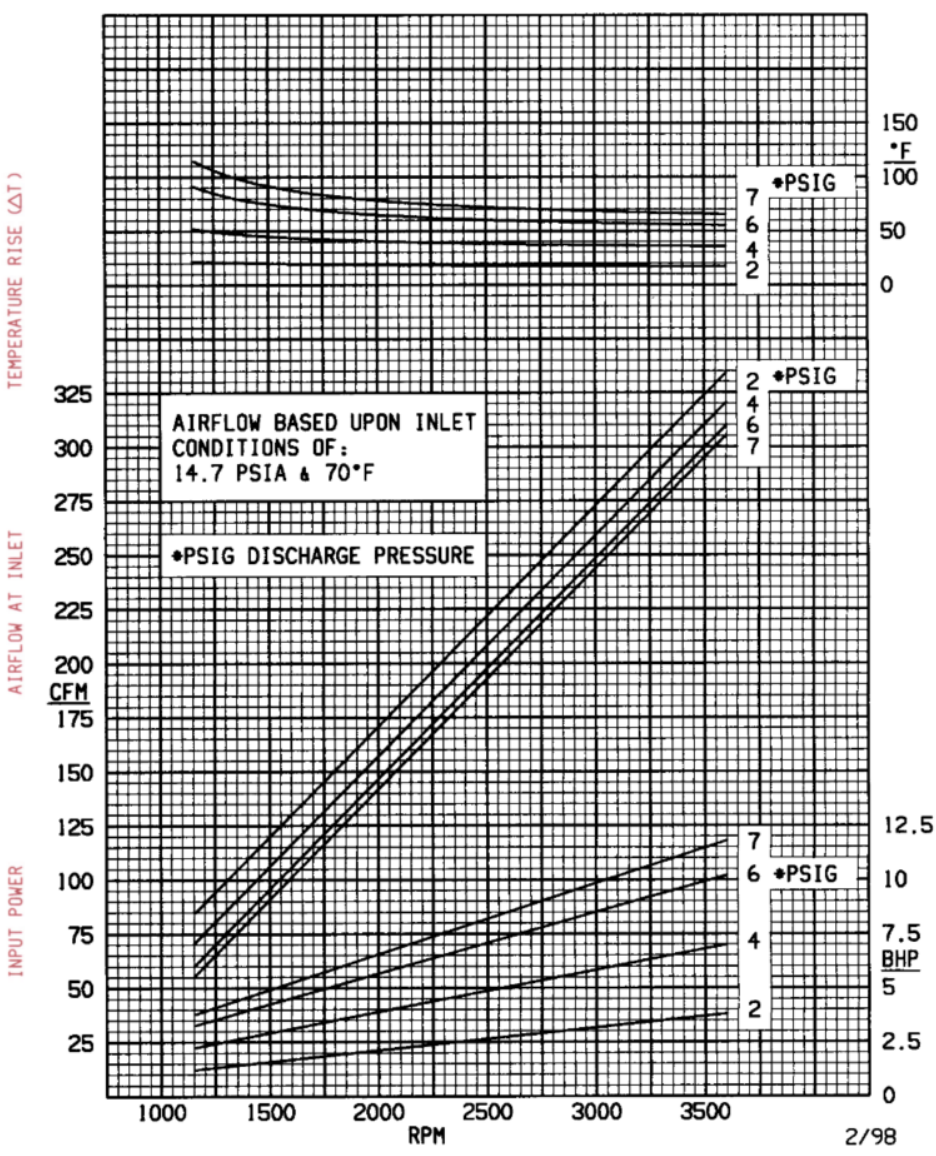
# Roots 36 URAI

PRESSURE PERFORMANCE



# Tuthill 3006 CP, 2-Lobe

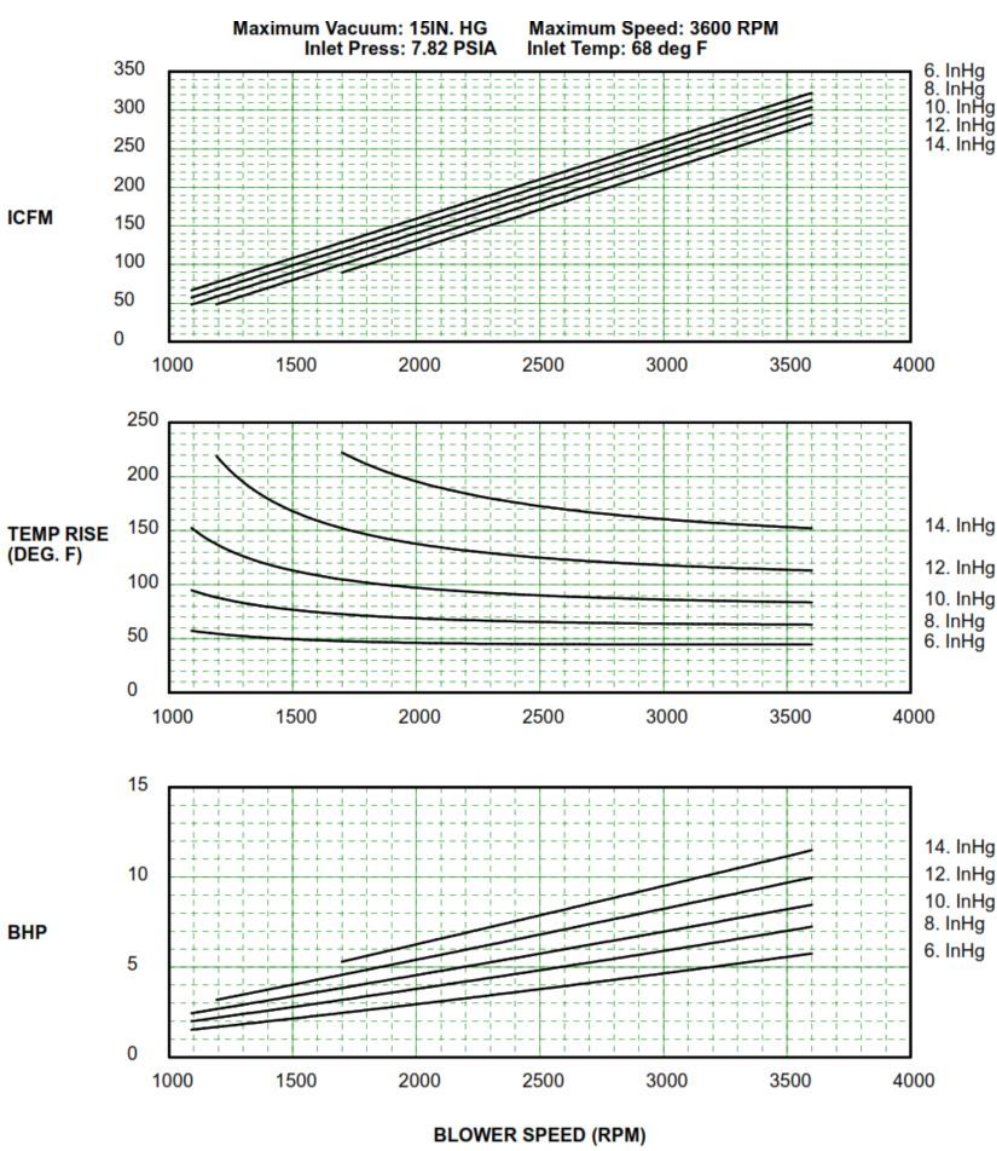
PRESSURE PERFORMANCE





# Roots 36 URAI

VACUUM PERFORMANCE



# Tuthill 3006 CP, 2-Lobe

VACUUM PERFORMANCE

