

Roots 42 URAI Blower

Comparison with Sutorbilt Legend 4H



SPECIFICATIONS

	ROOTS 42 URAI	SUTORBILT 4H LEGEND
Flow Range:	to 198 CFM	to 218 CFM
Max Δ Pressure:	15 psi	15 psi
Max Δ Vacuum:	16" Hg	16" Hg
Maximum RPM:	3600	3600
Minimum RPM:	848	955
Max Δ T:	240° F	210° F
Connection:	1.5" FPT	1.5" FPT
Shaft Diameter:	7/8"	7/8"
Unit Weight:	88 lb	138 lb

LUBRICATION

Both the 42 URAI and 4H utilize oil lubrication on the gear end and grease on the drive end.

	42 URAI	4H LEGEND
Required Oil (Horizontal Unit)	22.8 oz	24 oz
Required Oil (Vertical Unit)	12.7 oz	14 oz
Grease Type	Aluminum Complex NLGI #2	Lithium Complex NLGI #2

Gear End Oil Lubrication

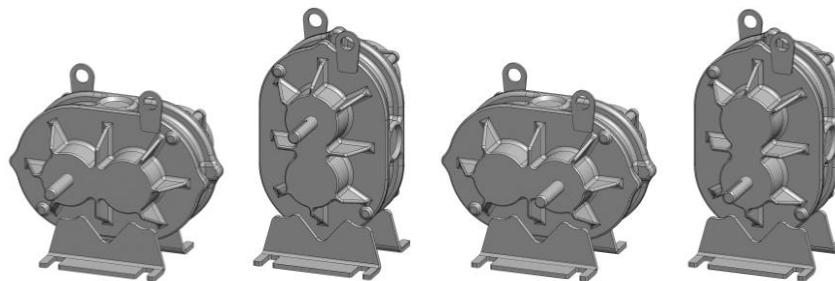
Blowers ship dry from factory and oil must be added before startup. Oil must be an industrial type non-detergent, rust inhibiting, anti-foaming oil of the correct viscosity. See your manual or contact us for assistance selecting the viscosity.

Drive End Grease Lubrication

These manufacturers use different types of grease which should not be mixed. If you plan to change to a different grease than the type that came in your blower, a full purge must be done.

CONFIGURATIONS

Both models feature movable mounting feet that allow the blower to be flipped into four different configurations. The manufacturer's part numbers are listed below.



	LEFT HAND	TOP DRIVE	RIGHT DRIVE	BOTTOM DRIVE
42	6510802L	6510802T	6510802R	6510802B
4H	GACHC*A	GACHA*A	GACHD*A	GACHB*A

**The sixth character in the Sutorbilt part number indicates the series designation. As of this print, the current series is S. Previous series include R, P and L.*

Roots 42 URAI Blower

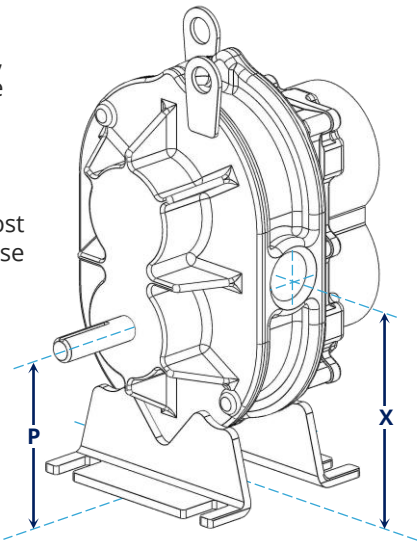
Dimensional Comparison with Sutorbilt 4H

While these are considered drop-in equivalents, there are minor differences which should be considered for your situation.

SHAFT AND CONNECTIONS

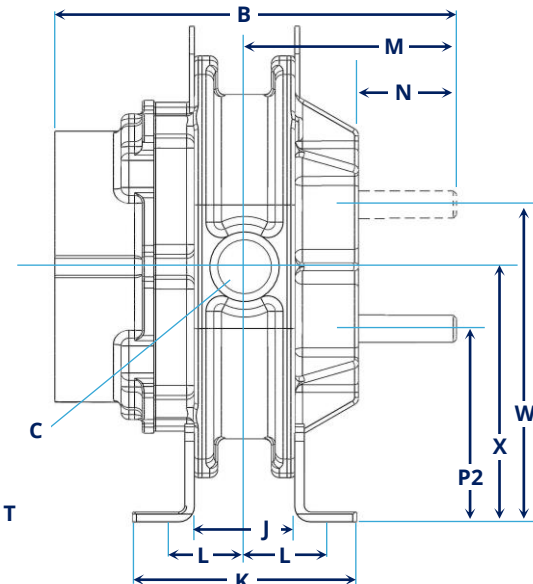
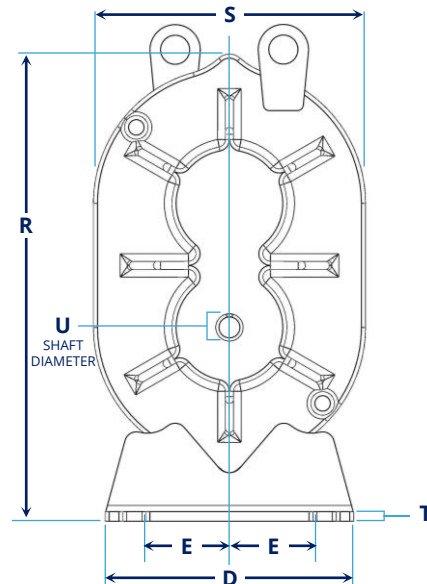
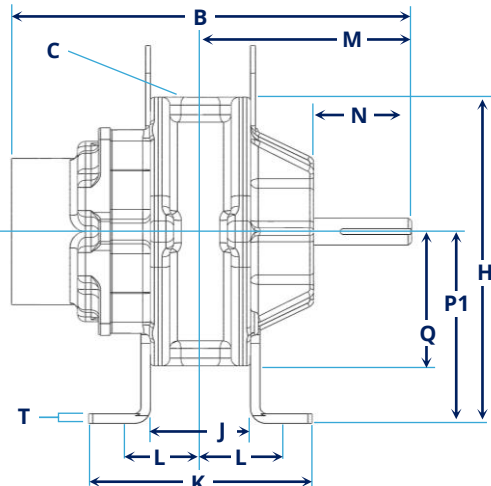
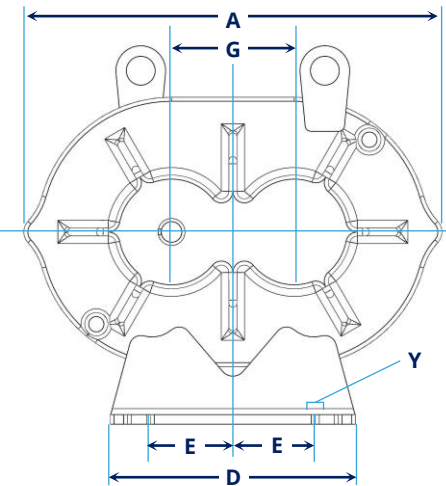
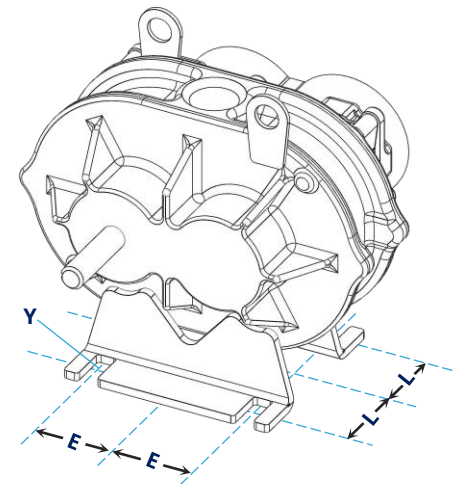
Shaft size (U) and connection size (C) are the most important dimensions to compare. With these two models both measurements are the same.

To determine whether any changes to your piping or enclosure will be needed, take note of the placement of the connections (X,H) and the shaft (P,W).



MOUNTING FEET

The placement of the bolt slots in the mounting feet is also important to consider. Both units feature universal mounting feet that can be moved to accommodate changes in configuration.

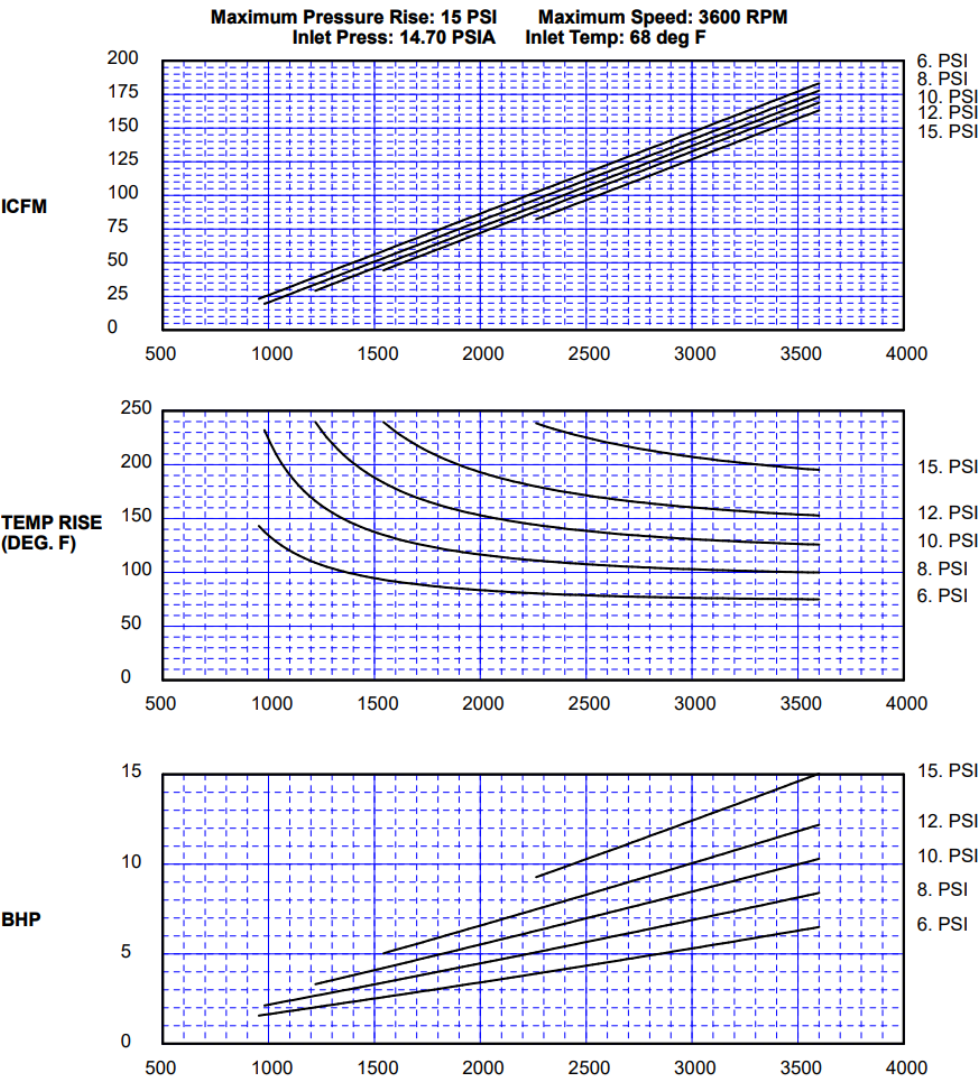


MAKE	MODEL	A	B	C	D	E	G	H	J	K	L	M	N	P1	P2	Q	R	S	T	U	W	X	Y
Roots	42 URAI	13.63	13	1.5" NPT	8	3 - 3.13	4	10.63	3.25	7.25	2.5 - 3.13	6.86	3.18	6.25	6.25	4.38	15.06	8.75	0.31	0.875	10.25	8.25	0.44 bolts
Sutorbilt	4H Legend	12.38	13.74	1.5" NPT	8.25	3	4	10.44	4	7.24	3	6.91	2.39	6.25	4.5	4.19	12.69	8.4	0.38	0.875	8.5	6.5	0.5 x 0.75

All measurements shown in inches

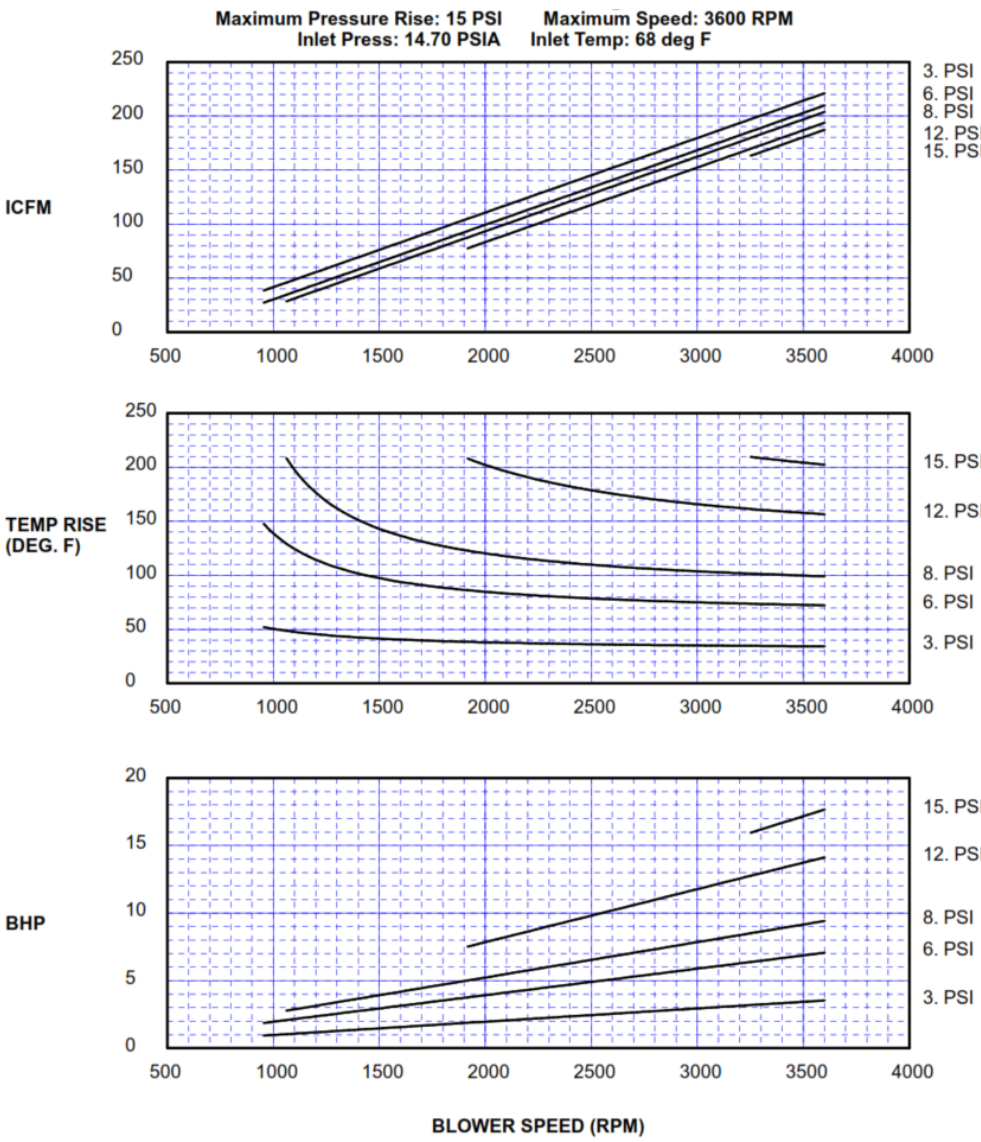
Roots 42 URAI

PRESSURE PERFORMANCE



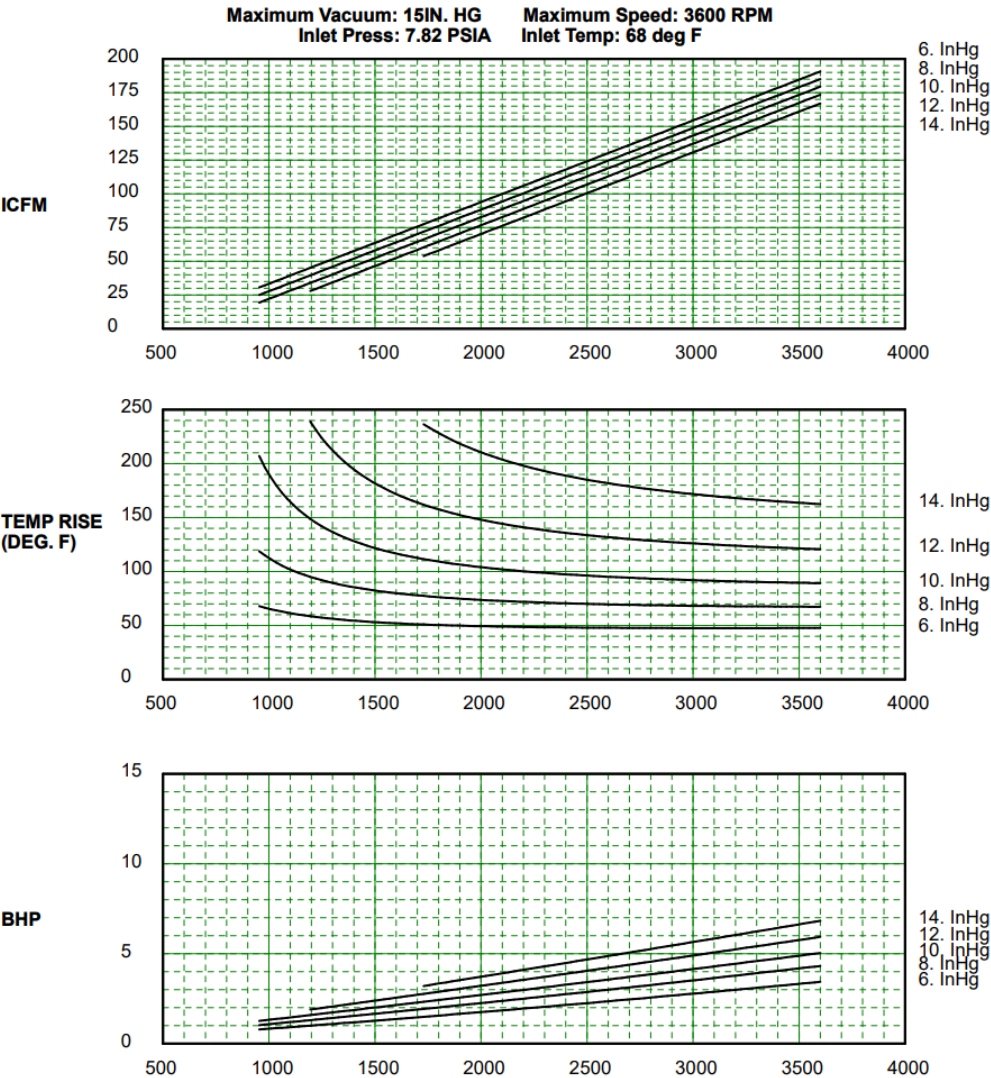
Sutorbilt 4H Legend

PRESSURE PERFORMANCE



Roots 42 URAI

VACUUM PERFORMANCE



Sutorbilt 4H Legend

VACUUM PERFORMANCE

