

Roots 45 URAI Blower

Comparison with Eurus ZZ4M



SPECIFICATIONS

	ROOTS 45 URAI	EURUS ZZ4M
Flow Range:	to 395 CFM	To 346 CFM
Max Δ Pressure:	10 psi	10 psi
Max Δ Vacuum:	15" Hg	16" Hg
Maximum RPM:	3600	3600
Minimum RPM:	848	945
Max ΔT:	225° F	225° F
Connection:	2.5" FPT	2.5" FPT
Shaft Diameter:	7/8"	7/8"
Unit Weight:	109 lb	132 lb

LUBRICATION

Both the 45 URAI and ZZ4M models utilize oil lubrication on the gear end and grease on the drive end.

	45 URAI	ZZ4M
Required Oil (Horizontal Unit)	22.8 oz	15.15 oz
Required Oil (Vertical Unit)	12.7 oz	6.7 oz
Grease Type	Aluminum Complex NLGI #2	Lithium Complex NLGI #2

Gear End Oil Lubrication

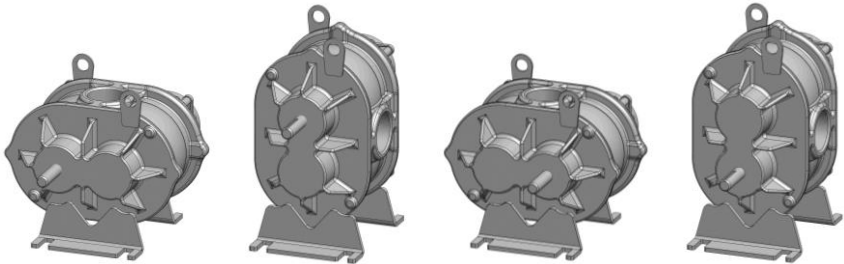
Blowers ship dry from factory and oil must be added before startup. Oil must be an industrial type non-detergent, rust inhibiting, anti-foaming oil of the correct viscosity. See your manual or contact us for assistance selecting the viscosity.

Drive End Grease Lubrication

These manufacturers use different types of grease which should not be mixed. If you plan to change to a different grease than the type that came in your blower, a full purge must be done.

CONFIGURATIONS

Both models feature movable mounting feet that allow the blower to be flipped into four different configurations. The manufacturer's part numbers are listed below.



	LEFT HAND	TOP DRIVE	RIGHT DRIVE	BOTTOM DRIVE
45 URAI	6510902L	6510902T	6510902R	6510902B
ZZ4M	ZZ4M	ZZ4M	ZZ4M	ZZ4M

Roots 45 URAI Blower

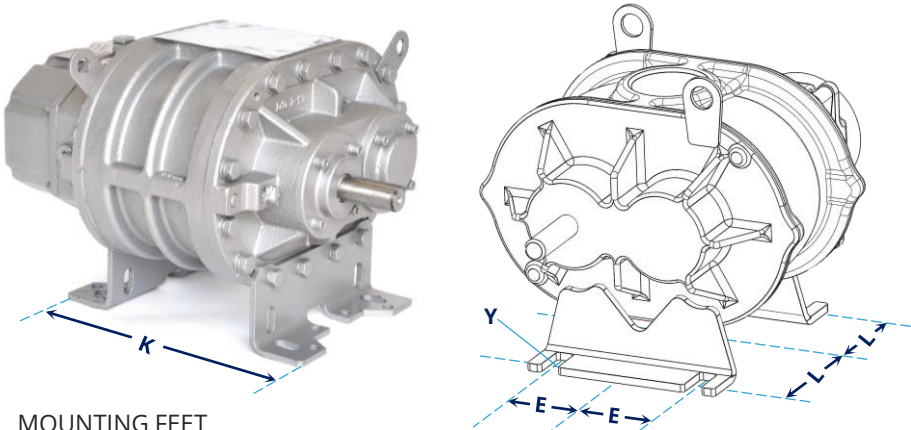
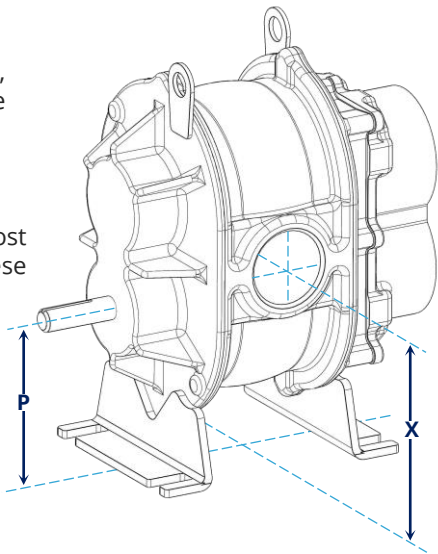
Dimensional Comparison with Eurus ZZ4M

While these are considered drop-in equivalents, there are minor differences which should be considered for your situation.

SHAFT AND CONNECTIONS

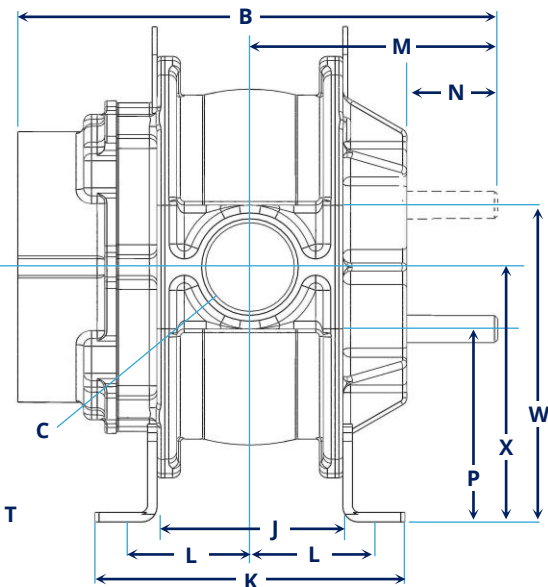
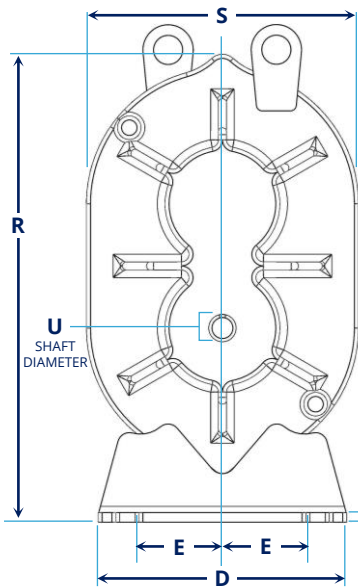
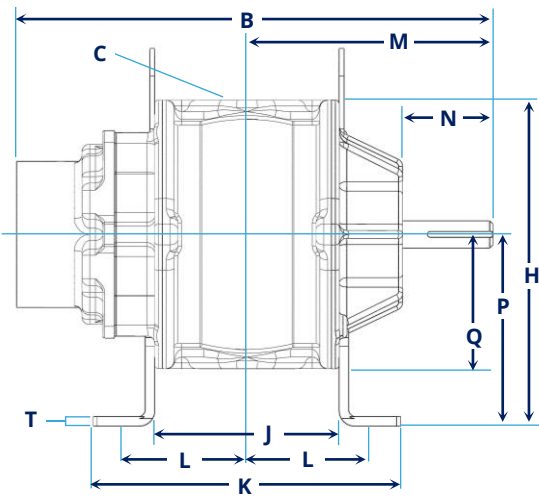
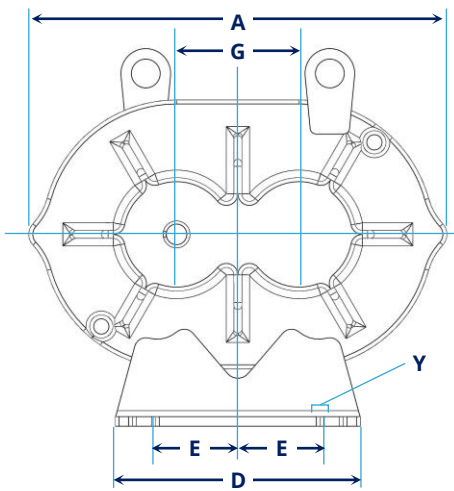
Shaft size (U) and connection size (C) are the most important dimensions to compare. With these two models both measurements are the same.

To determine whether any changes to your piping or enclosure will be needed, take note of the placement of the connections (X,H) and the shaft (P,W).



MOUNTING FEET

The placement of the bolt slots in the mounting feet is also important to consider. Both units feature universal mounting feet that can be moved to accommodate changes in configuration.

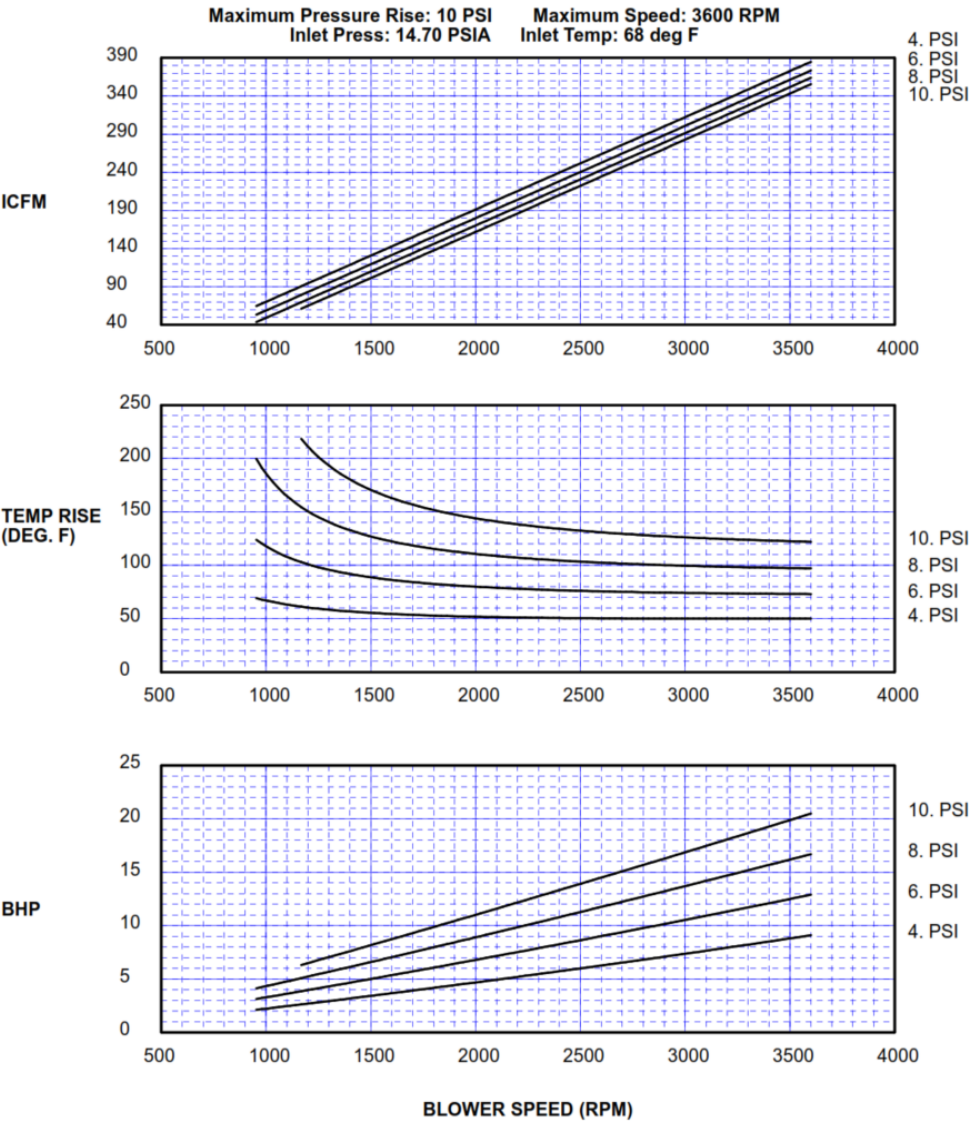


MAKE	MODEL	A	B	C	D	E	G	H	J	K	L	M	N	P1	P2	Q	R	S	T	U	W	X	Y
Roots	45 URAI	13.63	15.50	2.5" NPT	8	3 - 3.13	4	10.63	6	10	3.56 - 4.25	8	2.4	6.25	6.25	4.38	15.06	8.75	0.31	0.875	10.25	8.25	0.44 bolts
Eurus	ZZ4M	12.42	16.02	2.5" NPT	7.99	3	4.04	10.53	6.34	10.83	3.92 - 4.39	7.99	2.36	6.26	4.48	4.27	12.71	8.54	0.24	0.875	8.51	6.5	0.55 x 1.02

All measurements shown in inches

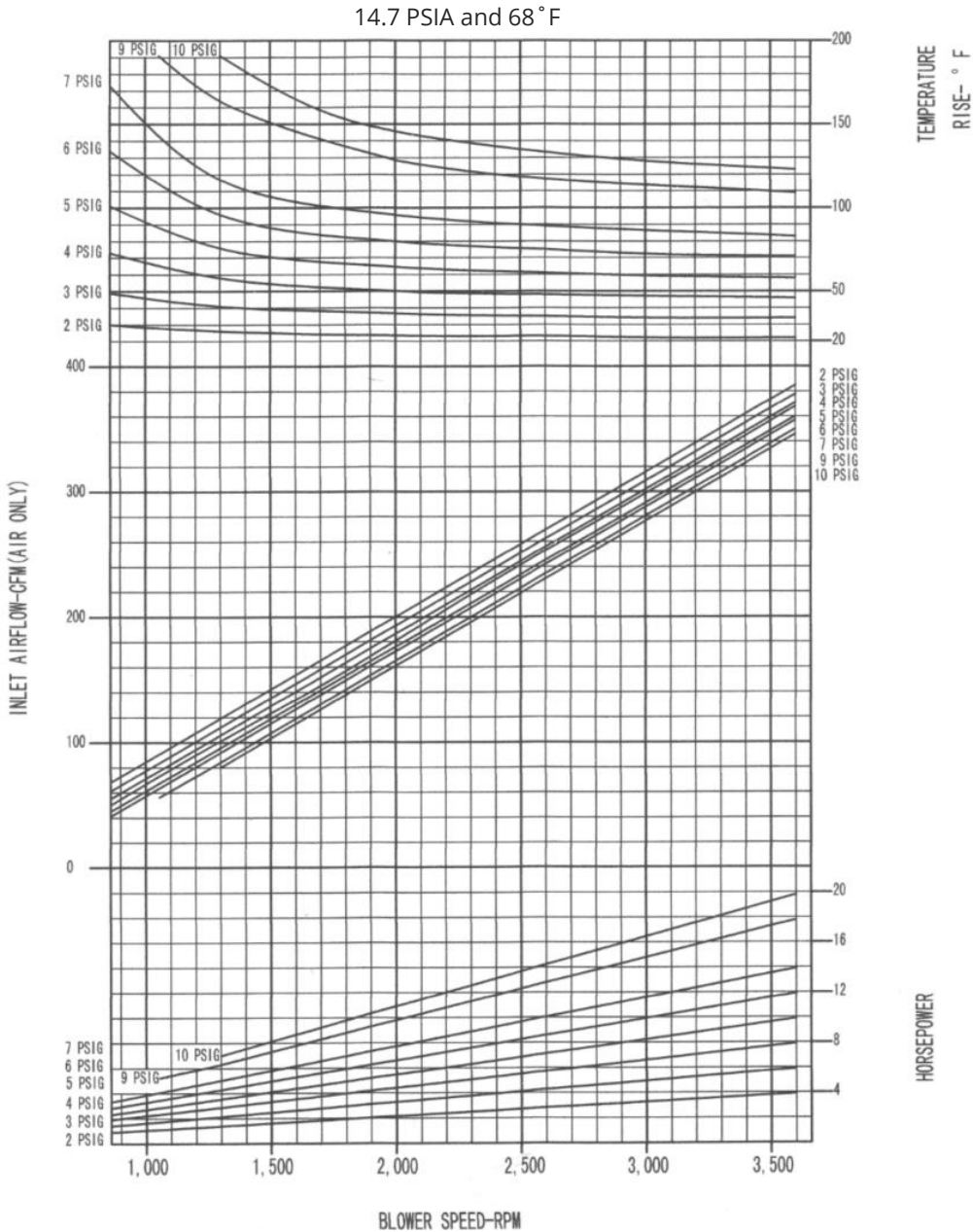
Roots 45 URAI

PRESSURE PERFORMANCE



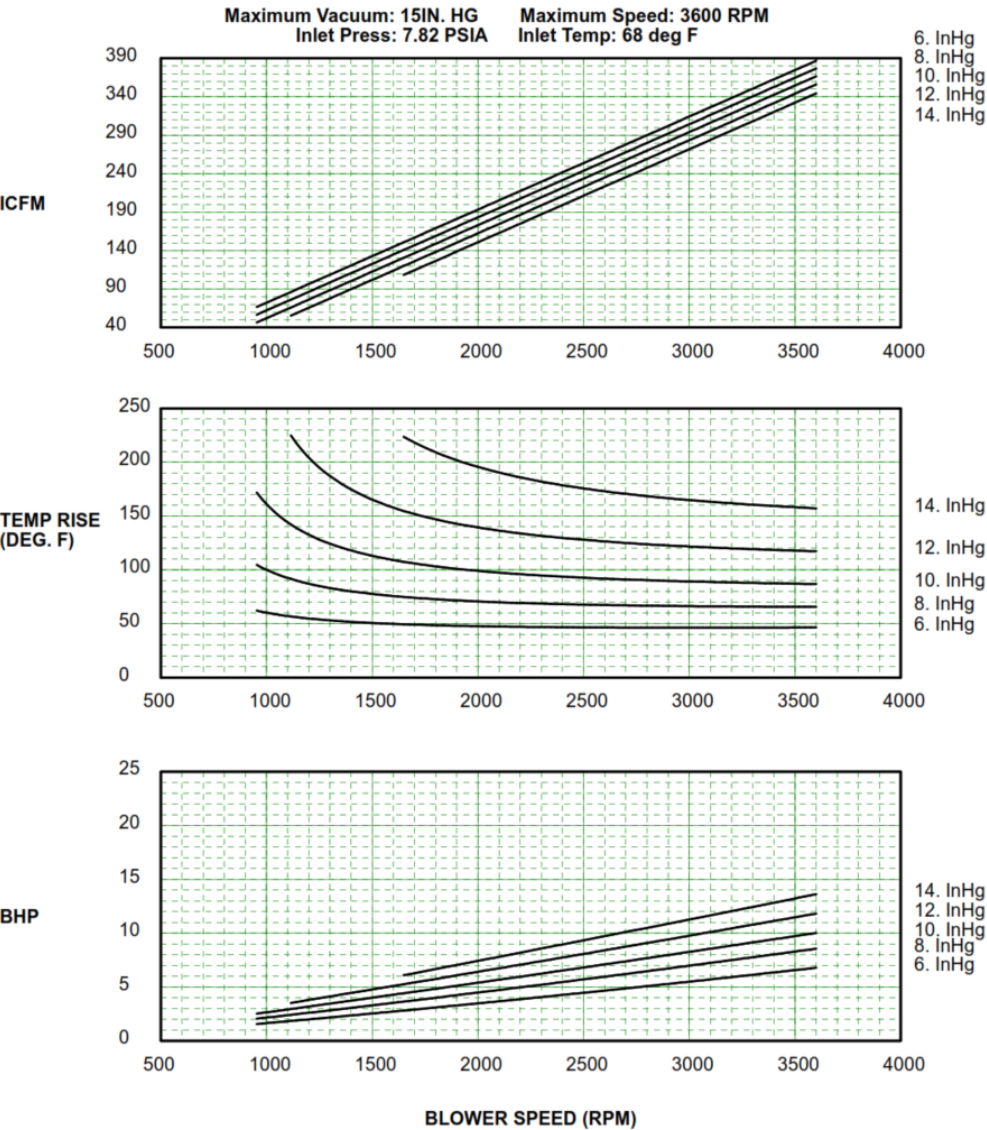
Eurus ZZ4M

PRESSURE PERFORMANCE



Roots 45 URAI

VACUUM PERFORMANCE



Eurus ZZ4M

VACUUM PERFORMANCE

