

# MaxQ Weighted Relief Valves

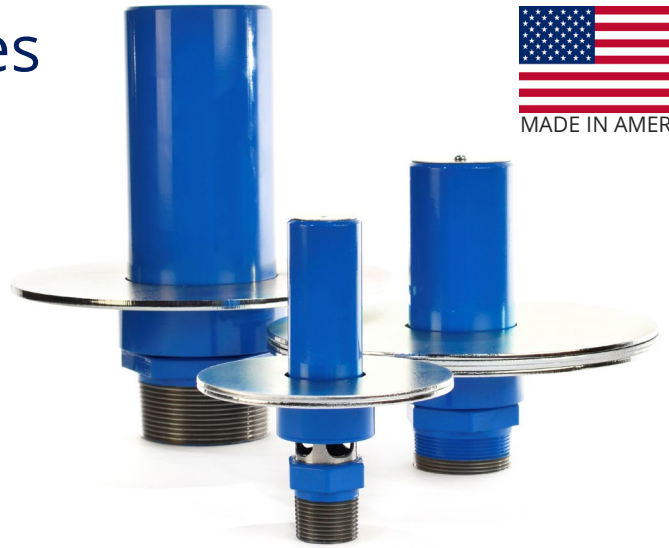
Carbon Steel, 1" through 4"



Made in the USA from American steel, pdblowers MaxQ valves provide the most reliable performance with simple operation and minimal maintenance. Valves are set between 1.5 PSIG through 15 PSIG using calibrated removable weights.

**OPERATION:** A weighted cap rides on a machined "piston". When the pressure exerted on the cap is greater than the weight of the cap, the cap rises allowing air to escape. The set pressure of the relief valve is modified by adding or removing weights. Each weight represents a change of set point of 0.5 psi.

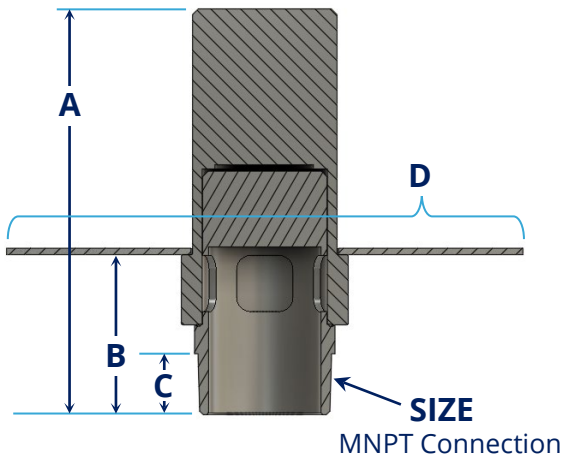
**MATERIAL:** 1018 carbon steel with machined and lubricated operating surfaces. A rust inhibiting, corrosion resistant phenolic alkyd resin primer is applied to the exposed steel, followed by a finish coat of high gloss metal finishing enamel. Steel weights are plated with RoHS compliant clear zinc for corrosion resistance.



**INSTALLATION:** Relief valves must be mounted in the vertical position to assure proper operation. The relief valve is installed on the discharge side of the blower, before any valves, preferably immediately after a silencer if one is supplied

**MAINTENANCE:** Rotate cylinders by hand on a monthly basis. Piston can also be lubricated with pdblowers VG220 synthetic oil for the smoothest operation.

## DIMENSIONS



SIZE	1"	2"	3"	4"
A	6"	7.22"	10.93"	12.3"
B	2.63"	2.85"	3.82"	4.16"
C	0.98"	1.06"	1.63"	1.73"
D	5.2"	9.19"	9.73"	12.5"
Weight, valve	1.83 lb	5.8 lb	21.38 lb	36.31 lb
Weight, each plate	0.61 lb	1.93 lb	4.28 lb	7.26 lb

## CAPACITY

